

RA583

Service Manual

TABLE OF CONTENTS

SERVICE WARNING.....	1
A. IMPORTANT SAFETY INSTRUCTION.....	1
B. SPECIFICATIONS.....	2
C. TIMING CHART.....	3
D. CONTROL LOCATION.....	5
E. CONDUCTIONVIEW.....	6
F. ADJUSTMENTPROCEDURE.....	.11
G. TROUBLE SHOOTING HINTS.....	12
H. BLOCK DIAGRAM.....	16
I. SCHEMATIC DIAGRAM.....	17

WARNING

To prevent from fire or shock hazard, do not expose monitor to any rain or any form of water. High voltage is inside the monitor so please do not remove the back cover of the cabinet if you are not a qualified monitor engineer. Contact the local dealer or the nearest **Proview** branch office if you need help.

A. IMPORTANT SAFETY INSTRUCTION

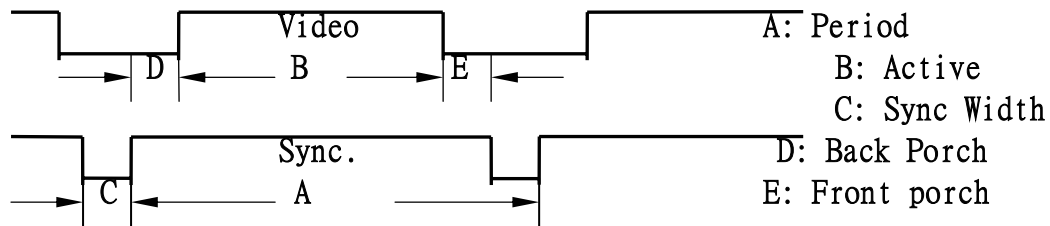
Prior to using this service manual, please ensure that you have carefully followed all the procedures outlined in the user's manual for this product.

1. Read all of these instructions.
2. Save these instructions.
3. Follow all warnings and instructions marked on the product.
4. Unplug this product from the wall outlet before cleaning. Do not use liquid cleaners or aerosol cleaners, use a damp cloth for cleaning.
5. Do not use this product near water.
6. Do not place this product on an unstable cart, stand or table. The product may fall, causing serious damage to the product.
7. Slots and openings in the cabinet and the back or bottom are provided for ventilation, to ensure reliable operation of the product and to protect it from overheating, those openings must not be blocked or covered. The openings should never be blocked by placing the product on a bed, sofa, rug, or other similar surface. This product should not be placed in a built-in installation unless proper ventilation is provided.
8. This product should be operated from the type of power source indicated on the marketin label. If you are not sure of the type of power available, consult your dealer or local power company.
9. This product is equipped with a 3-wire grounding type plug, a plug having a third (grounding) pin. This plug will only fit into a grounding-type power outlet. This is a safety feature, if you are unable to insert the plug into the outlet, contact your electrician to replace your obsolete outlet. Do not defeat the purpose of the grounding-type plug.
10. Do not allow anything to rest on the power cord. Do not locate this product where persons will walk on the cord.
11. If an extension cord is used with this product, make sure that the total of the ampere ratings on the product plugged into the extension cord to the wall plugged into outlet does not exceed 15 ampere.
12. Never push objects of any kind into this product through cabinet slots as they may touch dangerous voltage points or short out parts that could result in a risk of fire or electric shock. Never spill liquid of any kind on the product.
13. Do not attempt to service this product yourself, as opening or removing covers may expose you to dangerous voltage points or other risks. Refer all servicing to service personnel.
14. Unplug this product from the wall outlet and refer servicing to qualified service personnel under the following conditions.
 - a. When the power cord or plug is damaged or frayed.
 - b. If liquid has been spilled into the product.
 - c. If the product has been exposed to rain or water.
 - d. If the product does not operate normally, when the operating instructions are followed. Adjust only those controls that are covered by the operating instructions since improper adjustment of other controls may result in damage and will often require extension work by a qualified technician to restore the product to normal operation.
 - e. If the product has been dropped or the cabinet has been damaged.
 - f. If the product exhibits a distinct change in performance, indicating a need for service.

B. SPECIFICATIONS

1. Maximum Resolution	1024x768 @ 75Hz
2. Recommend Resolution	1024x768 @ 60Hz
3. Synchronization Range	
Horizontal	30 – 60 KHz
Vertical	56– 75 Hz
4. Active Display Area	304.1mm (H) x 228.1mm (V)
5. Dot Pitch	0.297(H) x 0.297(V) mm
6. Support display colors	16.7M color
7. Contrast Ratio (Typical)	400:1
8. Luminance of White	250cd/m ²
9. Bandwidth	135MHz
10. User Control	4 Key Switch
11. OSD Function	Brightness, Contrast, H-Pos, V-Pos, H. Size, Phase, Color Select, Auto, Reset, Language, OSD Adjust, Exit
12. View Angle CR=5	
Horizontal	+/-70 Degrees
Vertical	+/-60 Degrees
13. Power Source	90-264Vac 60 / 50 Hz
14. Power Consumption	48W (max.)
15. Connection Type	15 Pin D Type
16. Input Signal	
Video	Analog R.G.B. , 0.7Vp-p / 75 Ohms
Sync.	TTL level, positive or negative polarity
17. Color Temperature	Cool / Warm
18. Dimension (WxHxD)	421mm x 418mm x 188mm
19. Monitor Weight	4.8Kg
20. Base Operation	
Tilt	0 / + 15 degree
21. Power Saving	
ON	< 30W
STAND BY	< 3W
OFF	< 3W
22. Signal Connector Pin Assignment	
Pin No.	
	1. Red
	2. Green
	3. Blue
	4. Ground
	5. Self Test
	6. Red Ground
	7. Green Ground
	8. Blue Ground
	9. V _{DD} from PC for DDC
	10. Sync. Ground
	11. Ground
	12. SDA (For DDC)
	13. Horizontal Sync.
	14. Vertical Sync.
	15. SCL (For DDC)
23. Audio signal	3.5Φ stereo phone jack
	Input Sensitivity : 200mV
	2.5+2.5W 8Ω Speaker

C. TIMING CHART

[illegible]

Preset Modes	VESA 800X600	MAC 832X624	VESA 1024X768	VESA 1024X768	VESA 1024X768					
Dot Rate	49.500MHz	55.000MHz	65.000MHz	75.000MHz	78.750MHz					
F.H	46.875KHz	49.107KHz	48.363KHz	56.476KHz	60.023KHz					
A-period	21.333us	20.364us	20.677us	17.707us	16.660us					
B-Active	16.162us	15.127us	15.754us	13.653us	13.003us					
C-Syn	1.616us	2.182us	2.092us	1.813us	1.219us					
D-Back Porch	3.232us	1.745us	2.462us	1.920us	2.235us					
E-Front Porch	0.323us	1.31us	0.369us	0.321us	0.203us					
F . V	75.000Hz	75.087Hz	60.004Hz	70.069Hz	75.029Hz					
A-Period	13.333ms	13.318ms	16.666ms	14.272ms	13.328ms					
B-Active	12.800ms	12.707ms	15.880ms	13.599ms	12.795ms					
C-Syn	0.064ms	0.061ms	0.124ms	0.106ms	0.050ms					
D-Back Porch	0.448ms	0.428ms	0.600ms	0.513ms	0.466ms					
E-Front Porch	0.021ms	0.122ms	0.062ms	0.054ms	0.017ms					
H/V SYNC	+ +	- -	- -	- -	+ +					
Interlaced	NON	NON	NON	NON	NON					

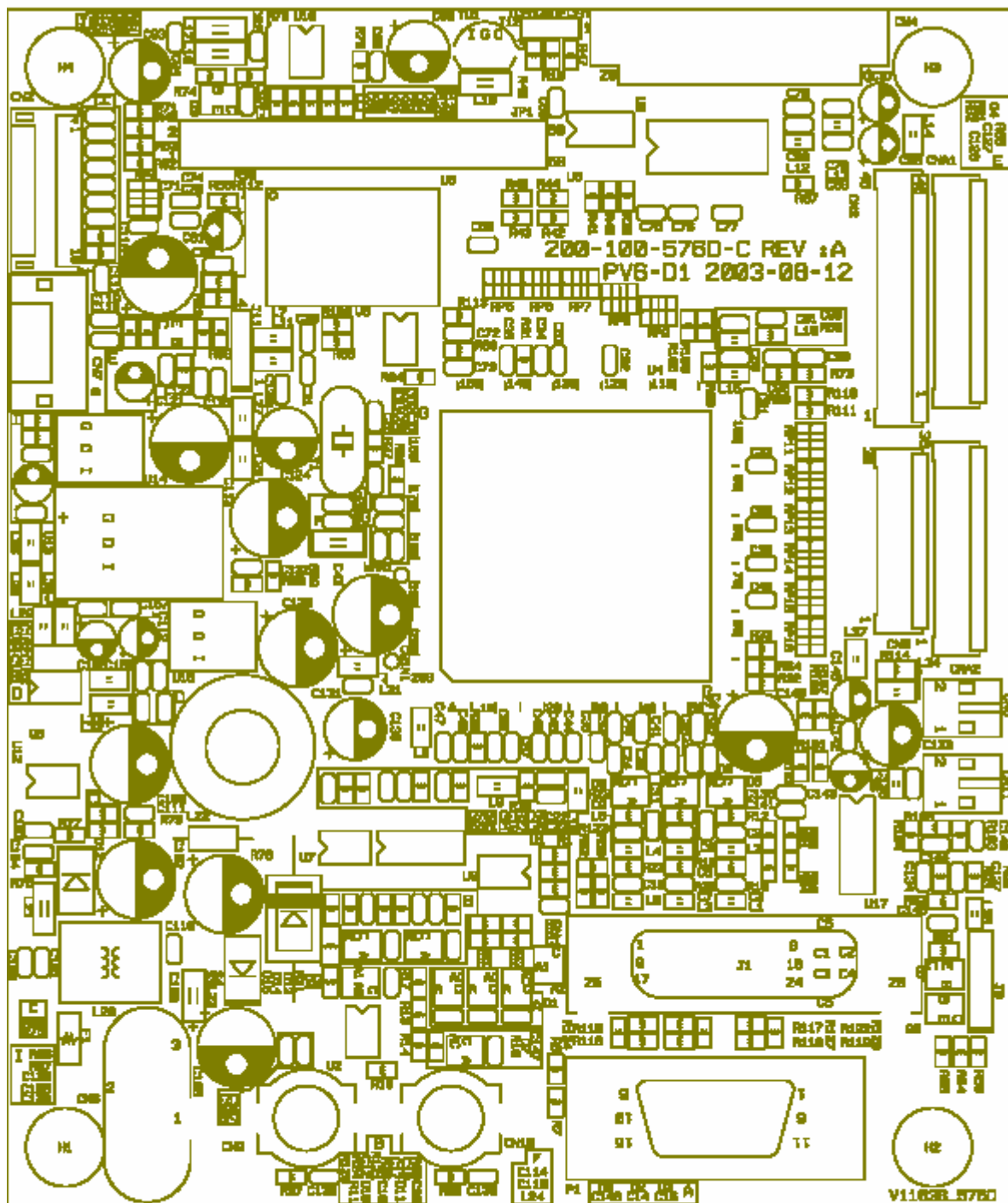
D. CONTROL LOCATION

Font control panel



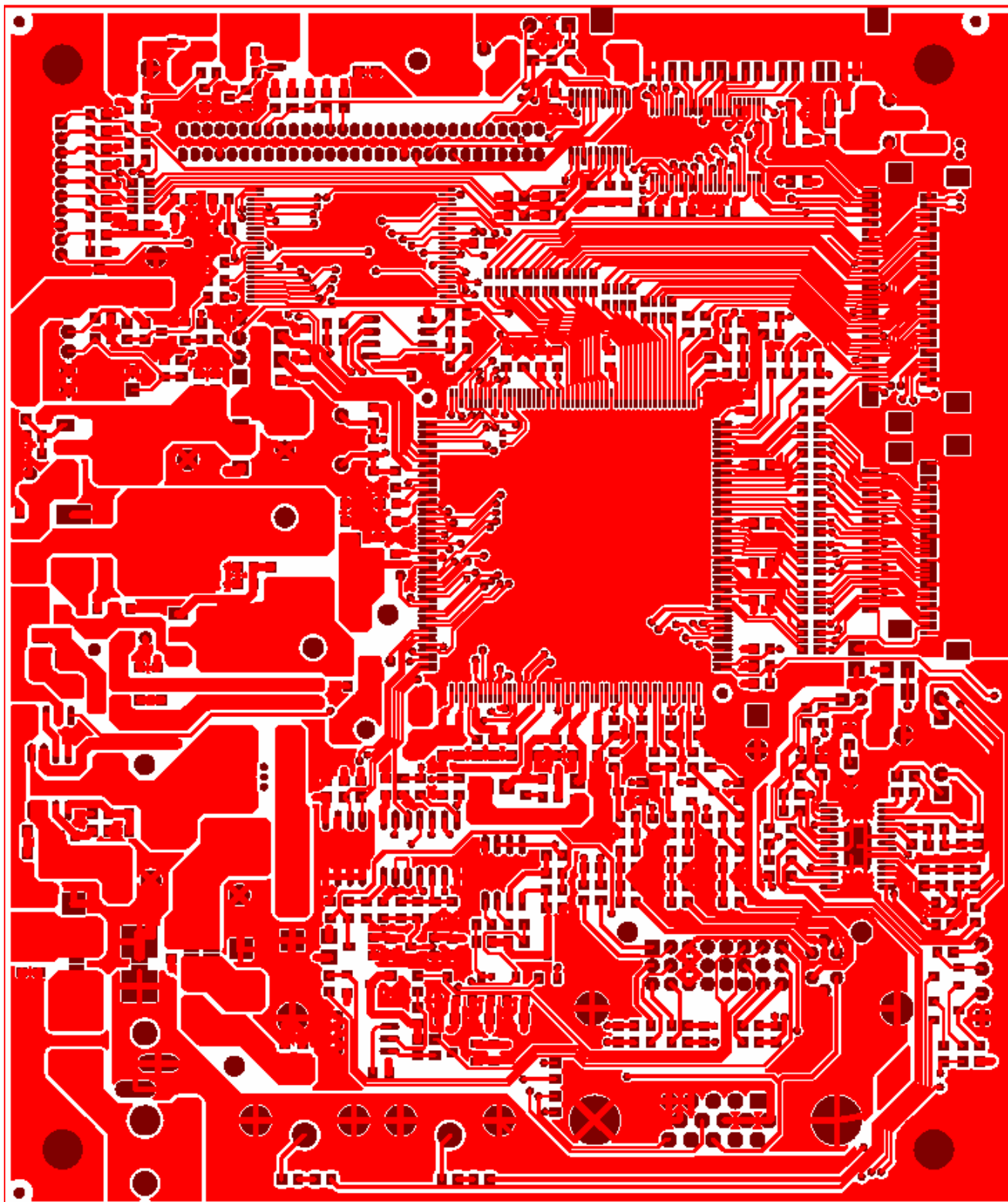
1. Power Button
2. LED (Power Display)
3. Menu Button
4. Select Button
5. Auto Button

E. CONDUCTION VIEW
MAINBOARD(ComponentSide)



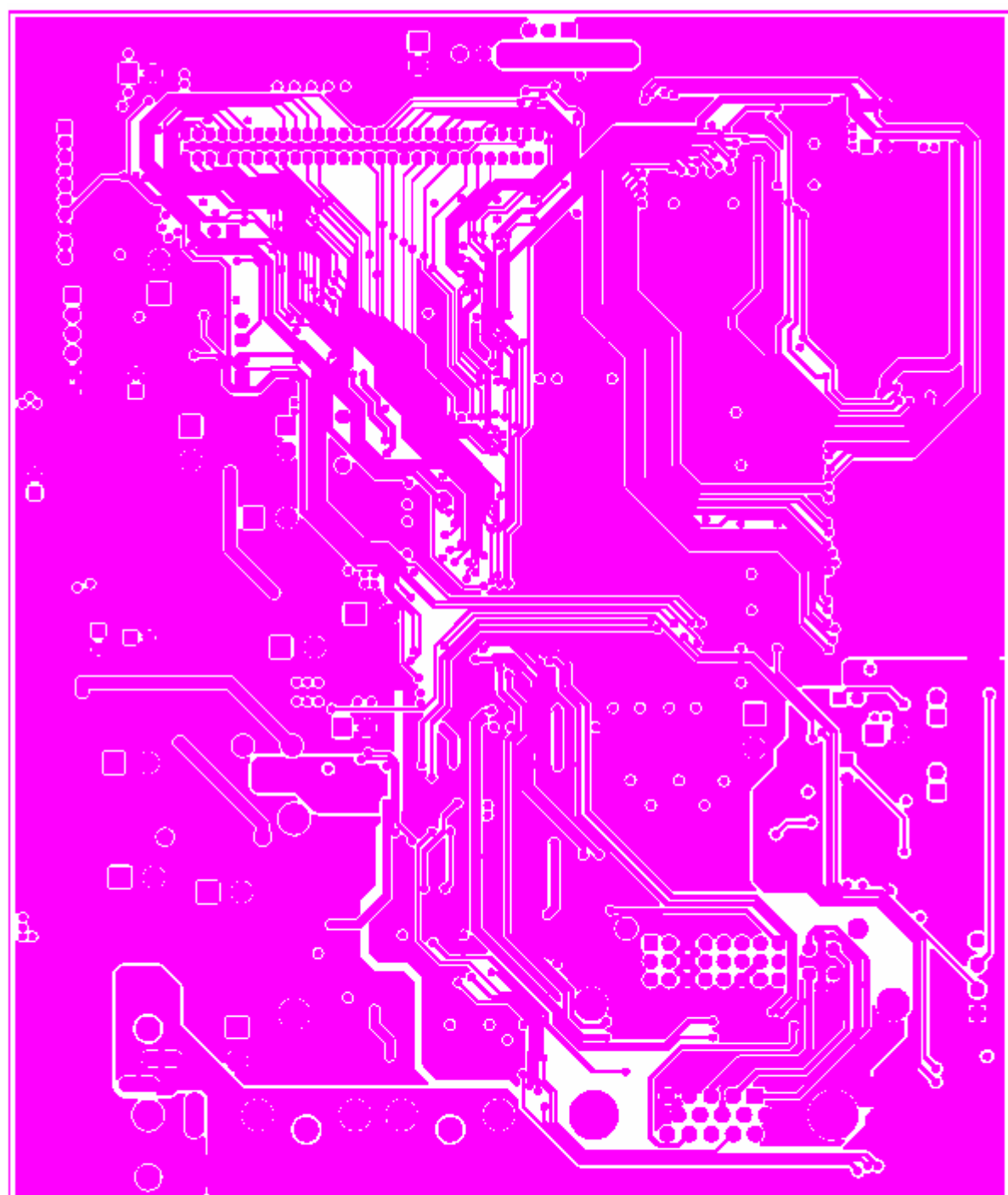
TOPIC TECHNOLOGY CO., LTD	
SILK SCREEN FOR TOP	No.: V11836_5760-B
	Layout: SOPHIA
	DATE: 08/18/2003
Model: 200-100-5760-C	REV: A

MAIN BOARD (Component Side)

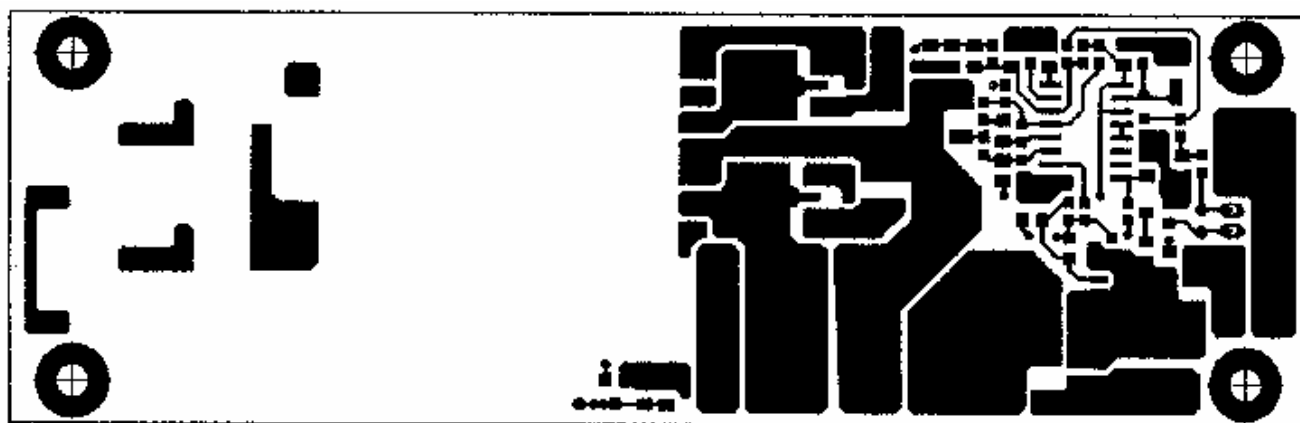


TOPIC TECHNOLOGY CO., LTD	
COMPONENT SIDE	No: V1183B_576D-B
FOR PINTOP	Layout: SOPHIA
Model: 200-100-576D-C	DATE: 08/10/2003
	REV: A

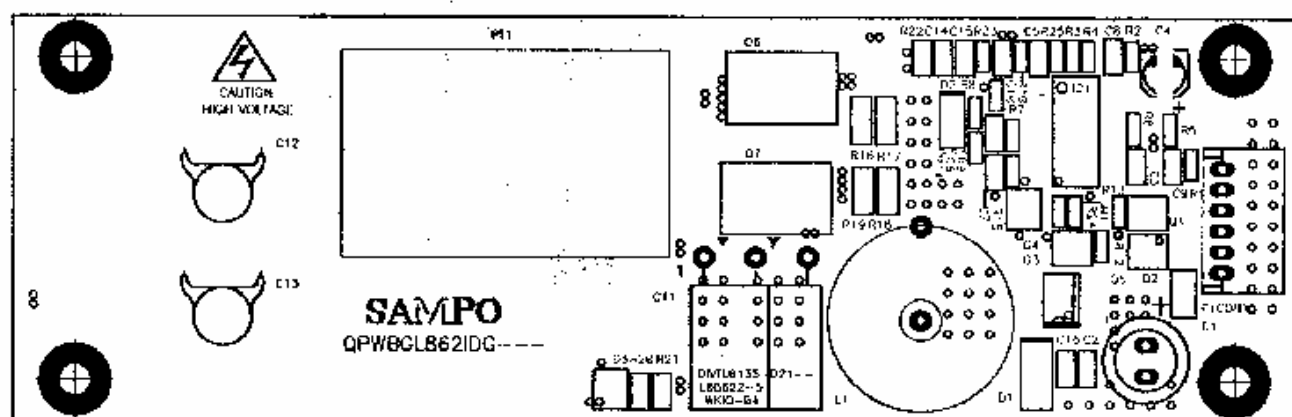
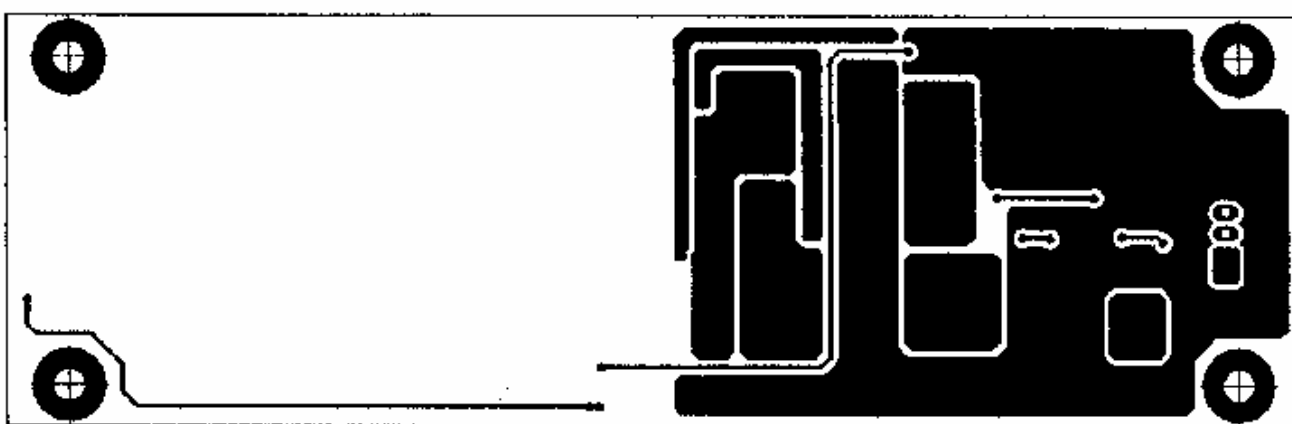
MAIN BOARD (Solid Side)



TOPIC TECHNOLOGY CO., LTD	
FOR PINBOT SOLDER SIDE	No: V1183B_576D-B
	Layout: SOPHIA
	DATE: 08/18/2003
Model: 200-100-576D-C	REV: A



NOTICE

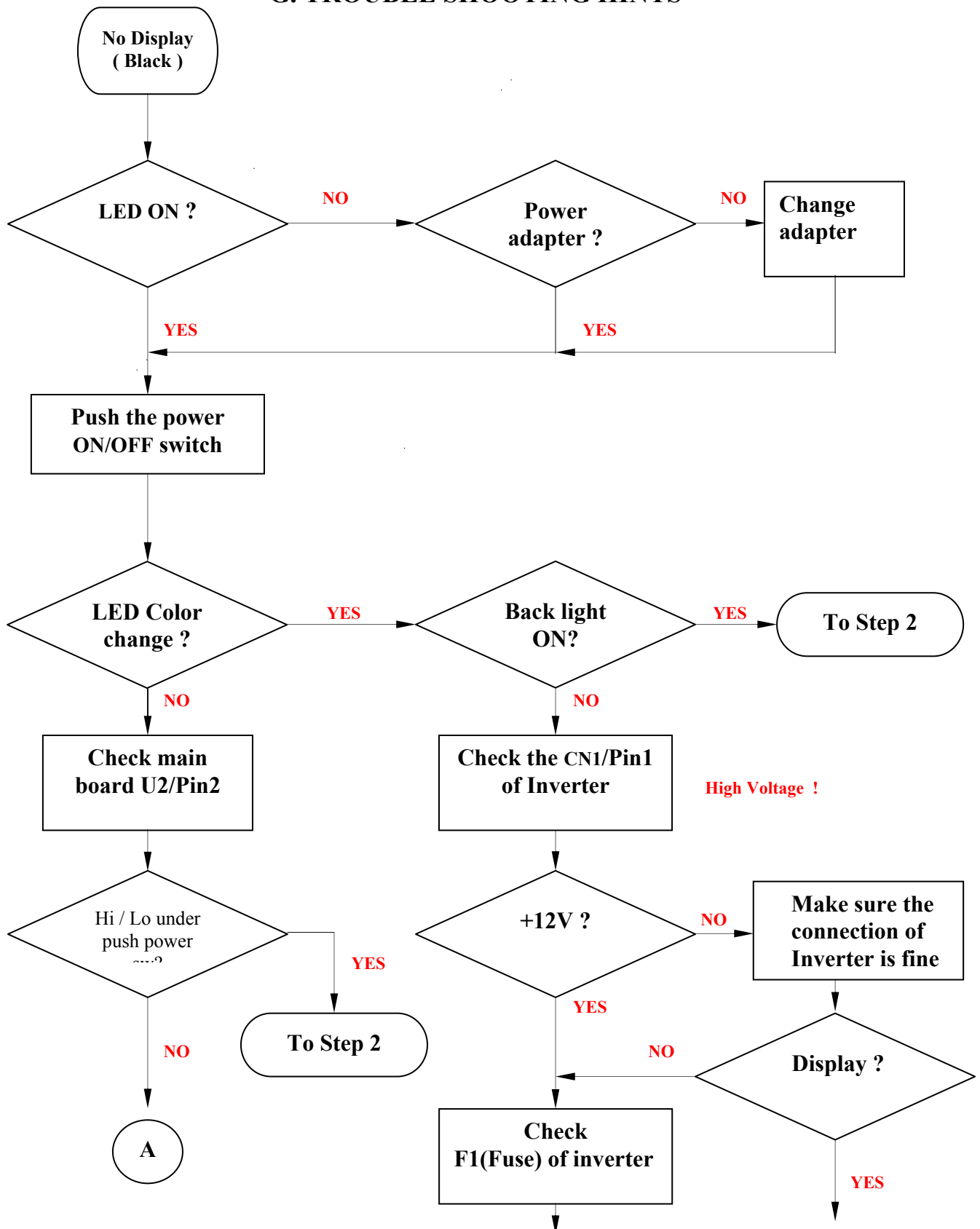


F. ADJUSTMENT PROCEDURE

ITEM Program Menu.		# Test Meter * Test Point @ Pattern	Operation	Check Value
A	B+ Check	# Digital Voltmeter * CN7 @ Crosshatch Pattern (31.5KHz,640x480)	1. Plug power cable into the adapter, check adapter power indicator light up green. 2. Make sure the voltage of the power plug (CN7) on the main PCB to the value shown at right.	12.0V ±0.2V
B	Power Saving Check	# Wattmeter # PC or Pattern generator @ Crosshatch Pattern (31.5KHz,640x480)	1. Unplug the signal cable into the monitor. 2. Turn the power switch of the monitor ON . 3. Check monitor power indicator light up orange. 4. Make sure the wattmeter value shown at right. 5. OSD will be display “ NO SIGNAL ” Picture.	< 2.5W
C	Into Factory mode	# PC or Pattern generator @ Crosshatch Pattern (31.5KHz,640x480)	1. Hold < key, then turn the power switch of the monitor OFF . 2. Hold > key, then turn the power switch of the monitor ON . 3. You can into factory adjustment mode.	
D	Auto mode Check	# PC or Pattern generator @ Crosshatch Pattern (1024x768/60Hz)	1. Press and release the MENU knob to activate the OSD menu. 2. Move the OSD to the AUTO function, press MENU key auto adjust display mode to its utmost performance according to VGA setting. 3. In the event of the display image needs further adjustment	
E	White Balance Adjust	# PC or Pattern generator @ White Pattern (1024x768/60Hz)	1. Move the OSD to the COLOR mode (AUTO COLOR). 2. set color is 9300°K using the OSD, Check the value shown at right. Y = 220±0.1FL x = 0.283±0.01 y = 0.297±0.01 3. set color is 6500°K using the OSD, Check the value shown at right. Y = 220±0.1FL x = 0.313±0.01 y = 0.329±0.01	

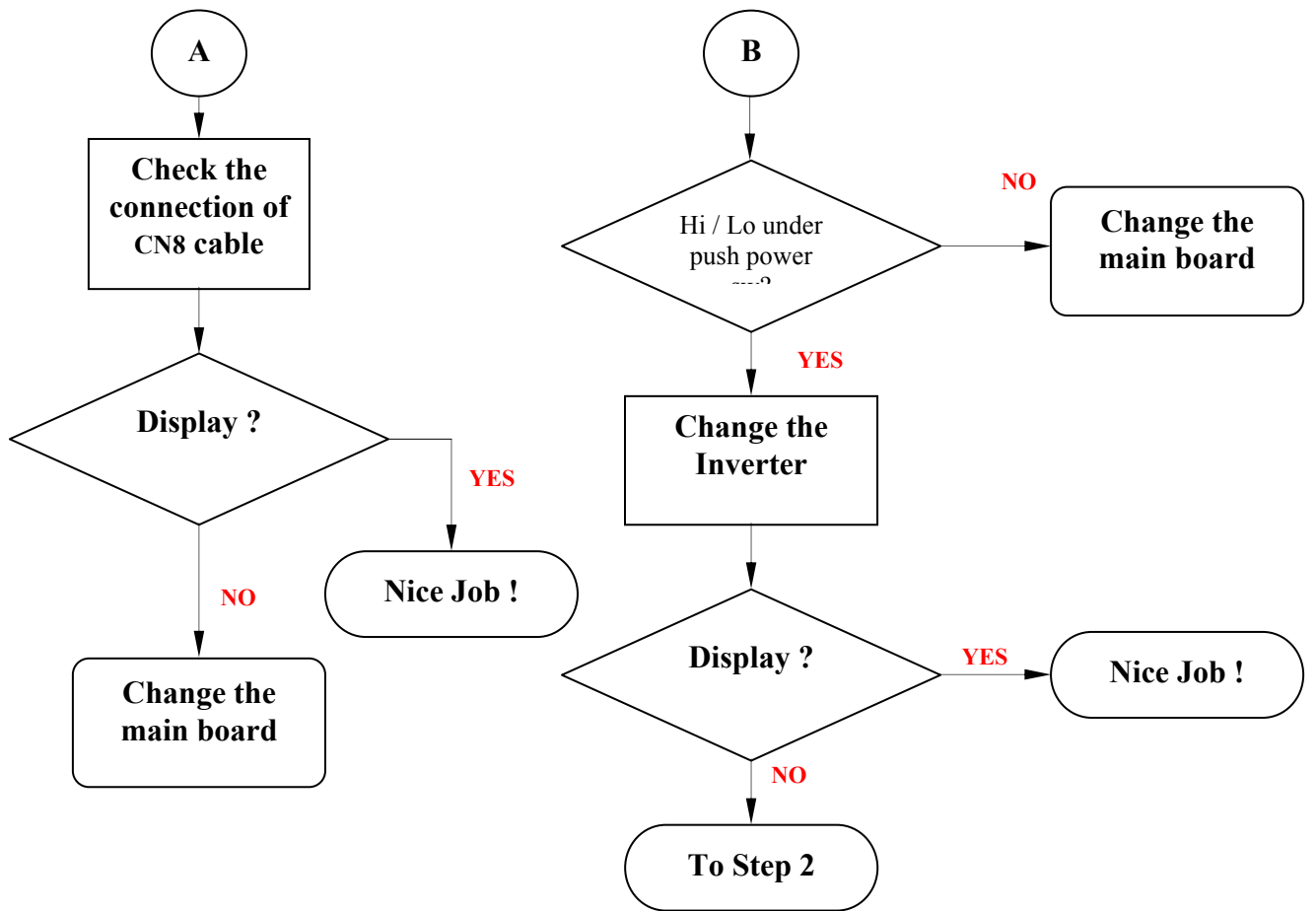
F	OSD Language Setting	# PC or Pattern generator	1. Move the OSD to the LANGUAGE mode. 2. You can choose one of the eight language you need.	
----------	-------------------------------------	------------------------------	---	--

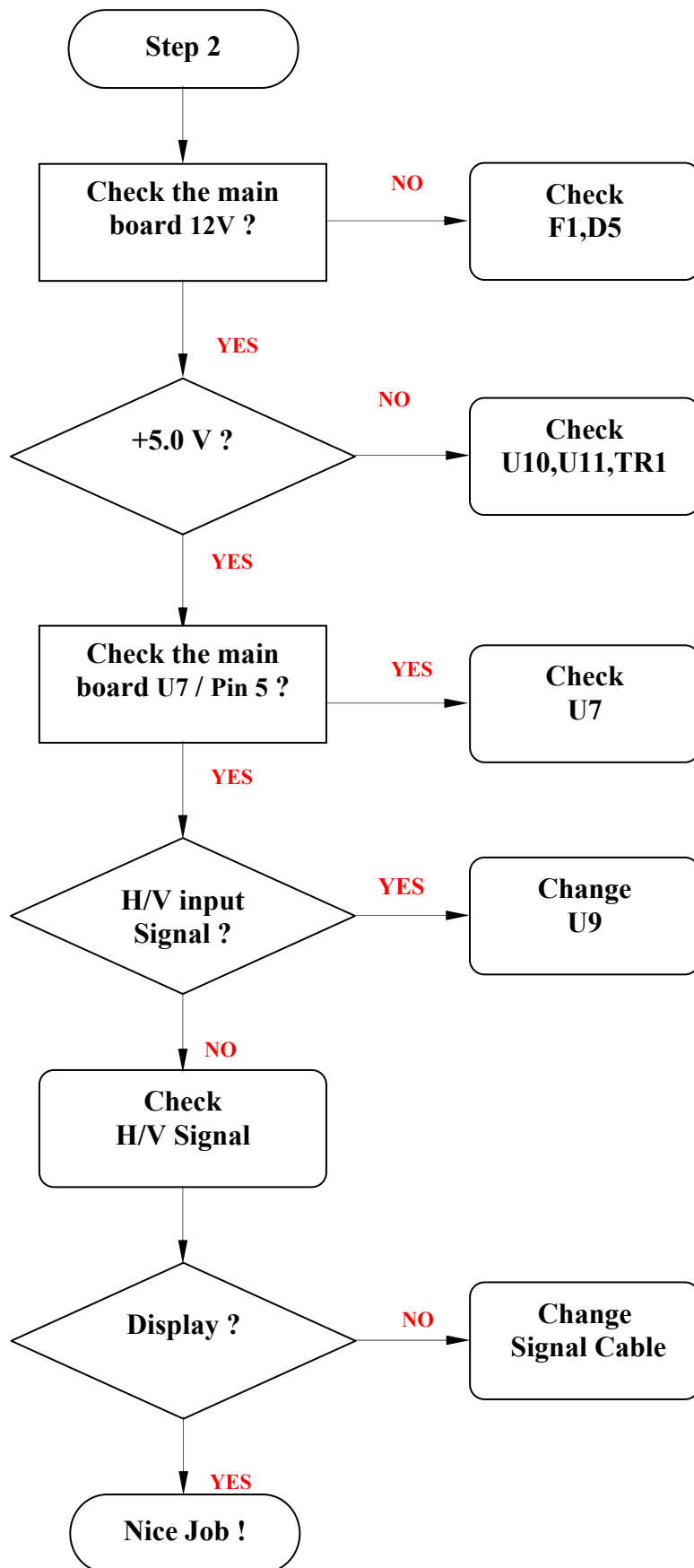
G. TROUBLE SHOOTING HINTS

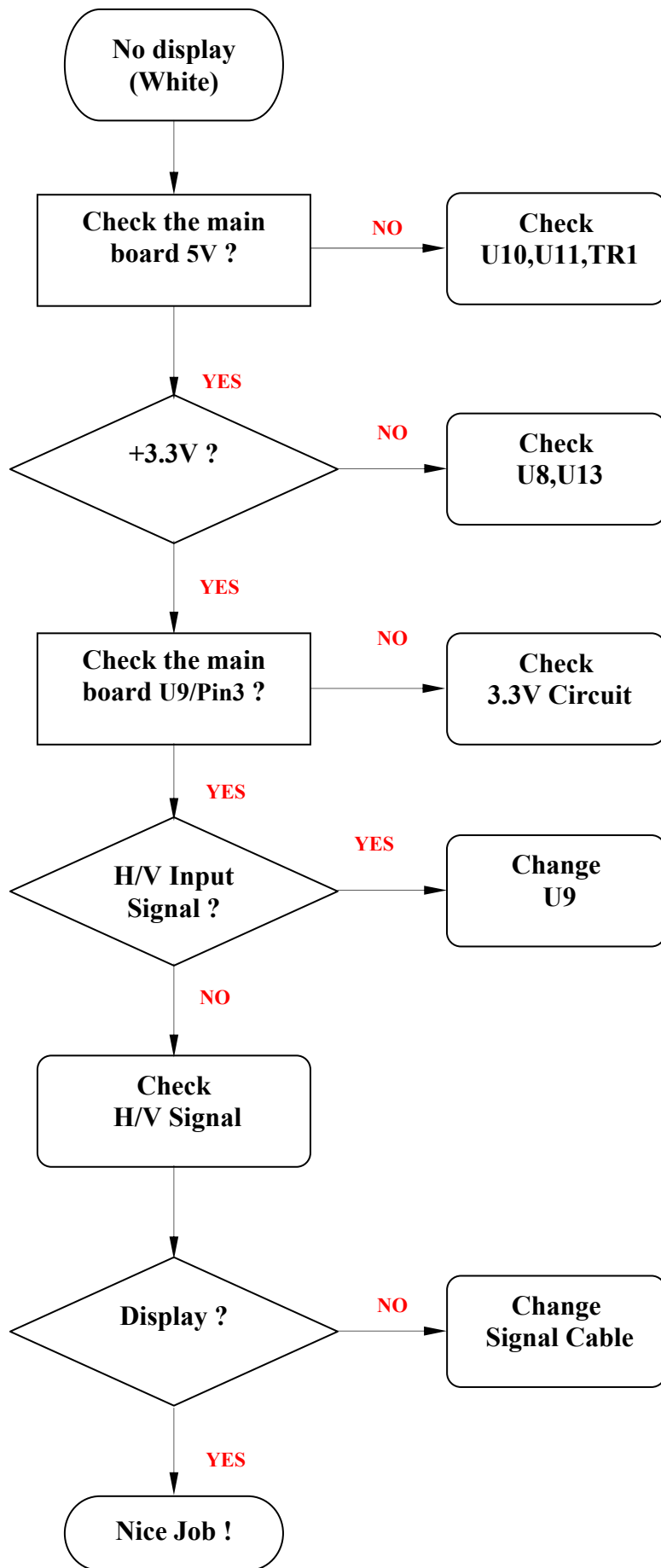


B

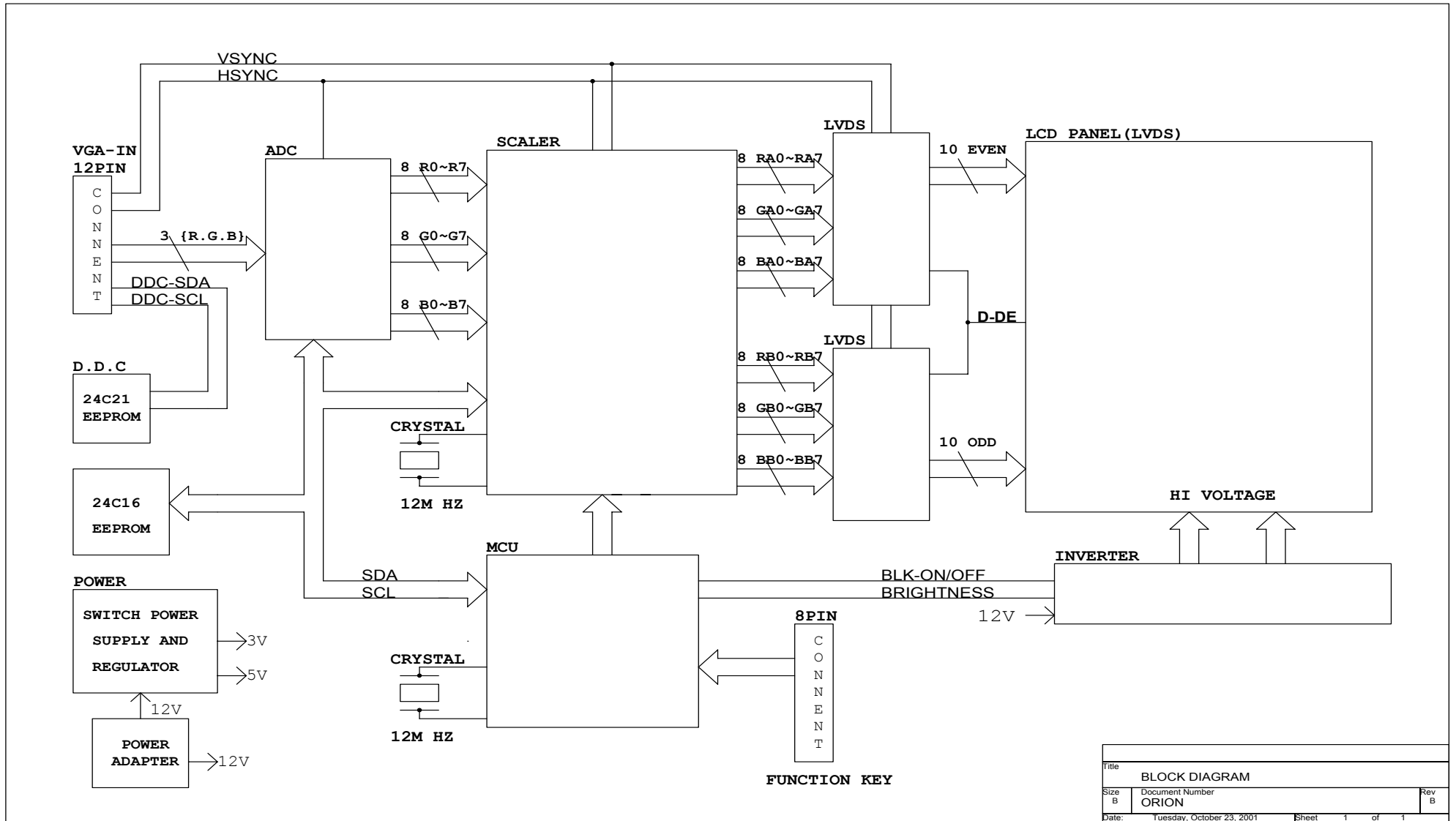
Nice Job !





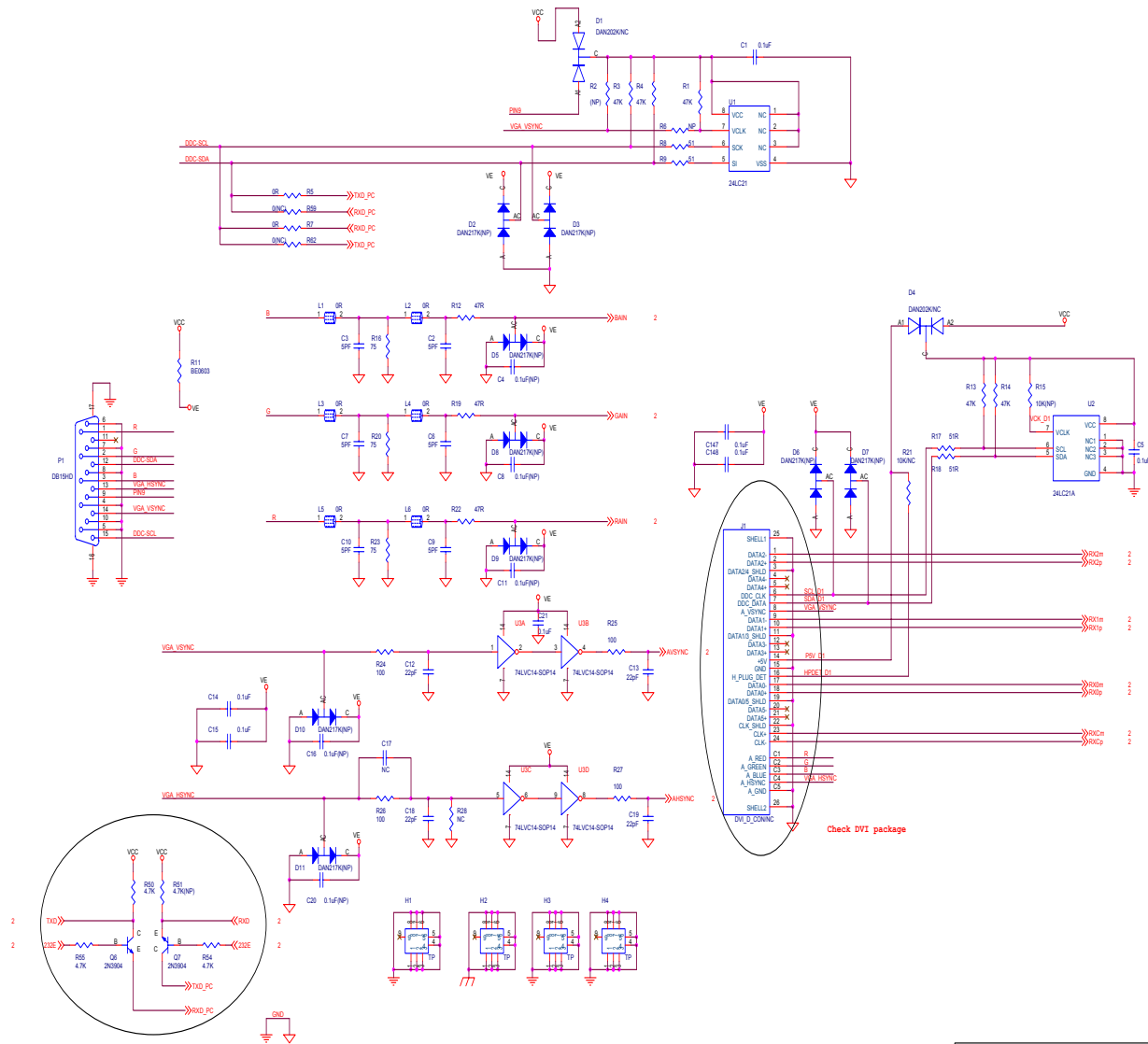


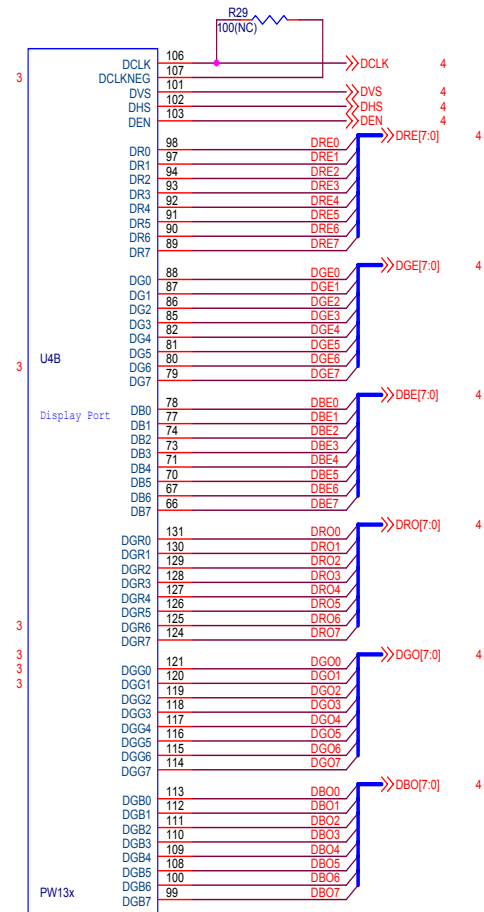
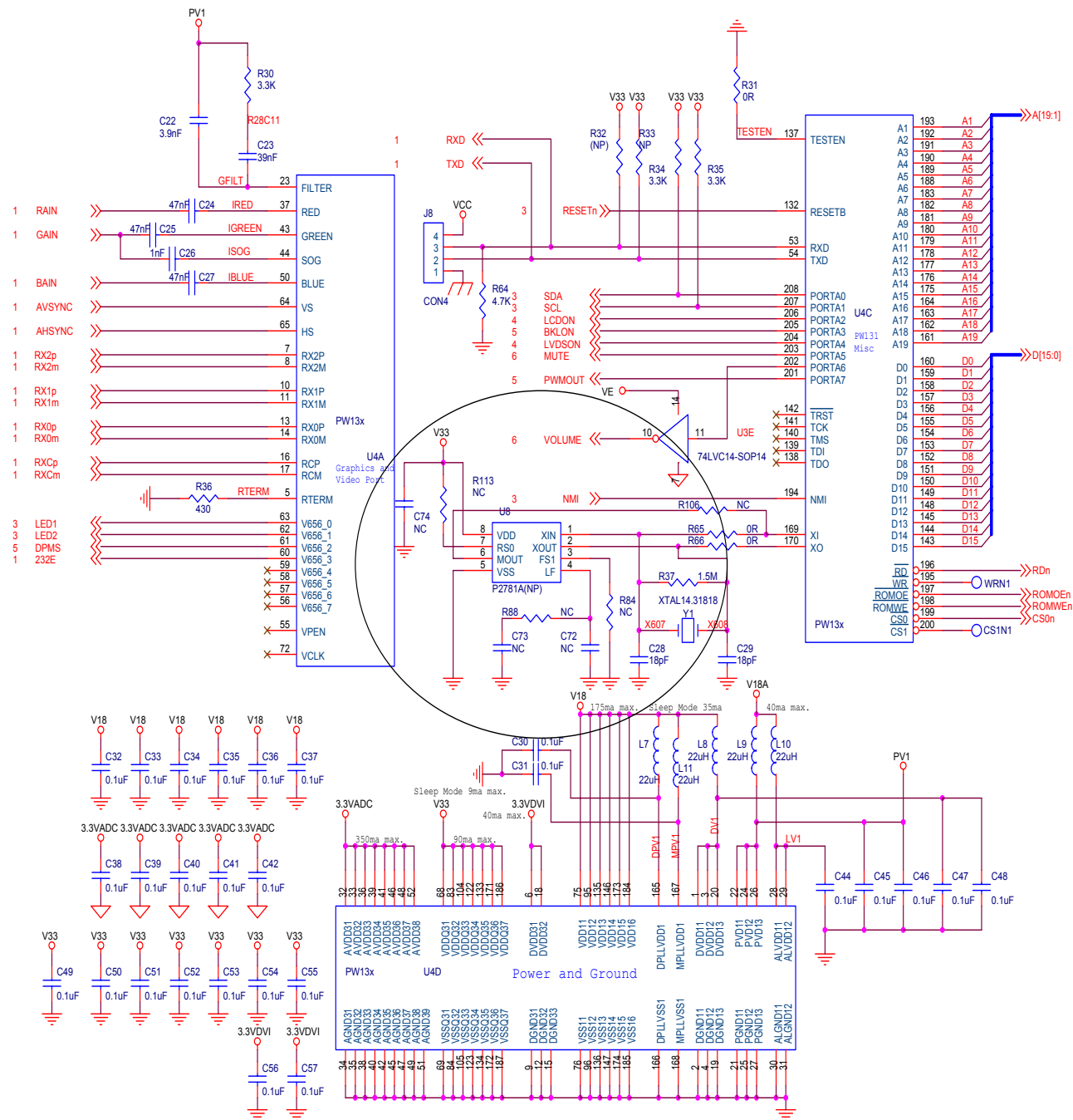
H. BLOCK DIAGRAM



Title		
BLOCK DIAGRAM		
Size	Document Number	Rev
B	ORION	B
Date:	Tuesday, October 23, 2001	Sheet 1 of 1

I.SCHEMATIC DIAGRA

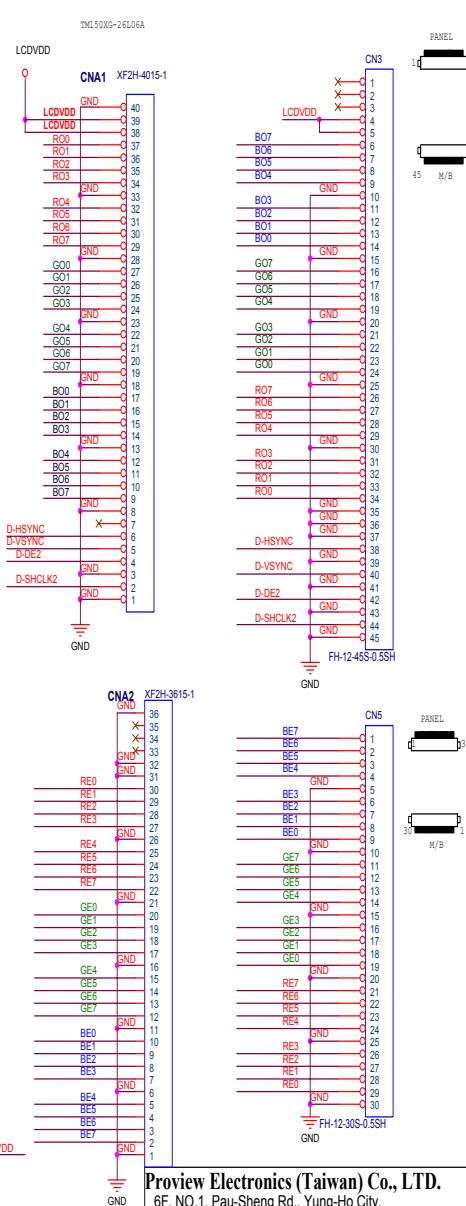
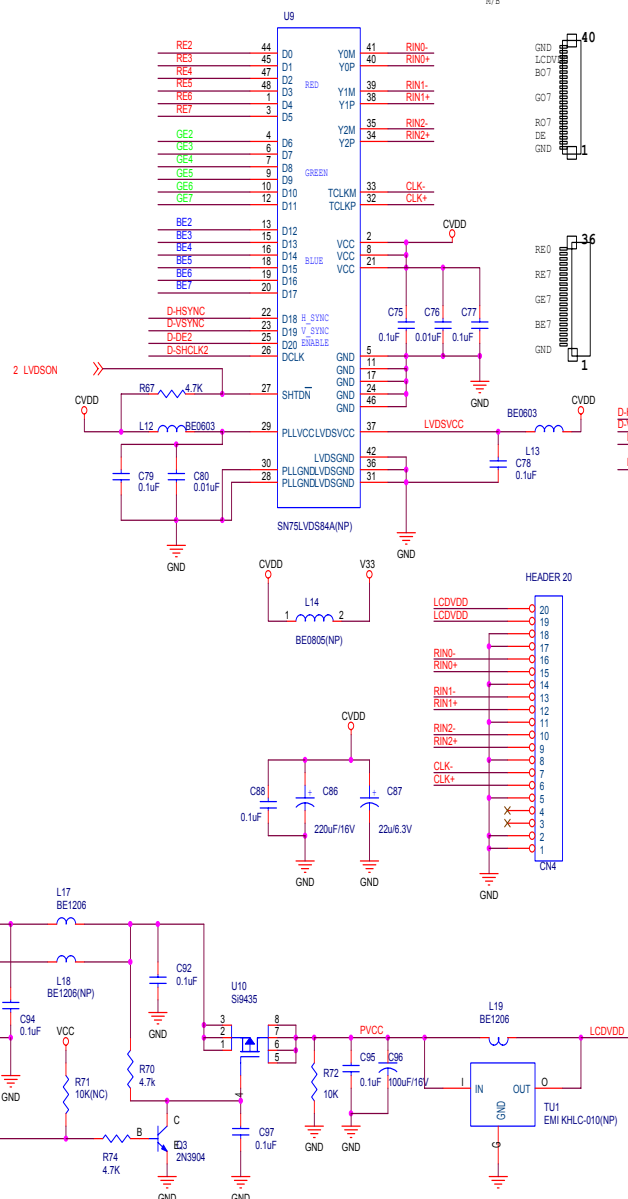
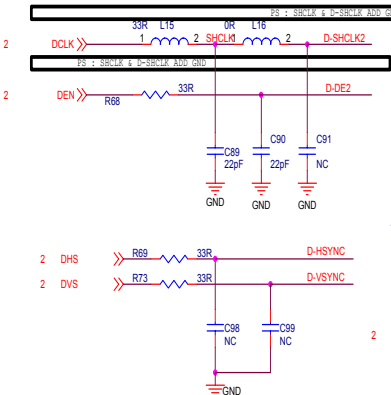
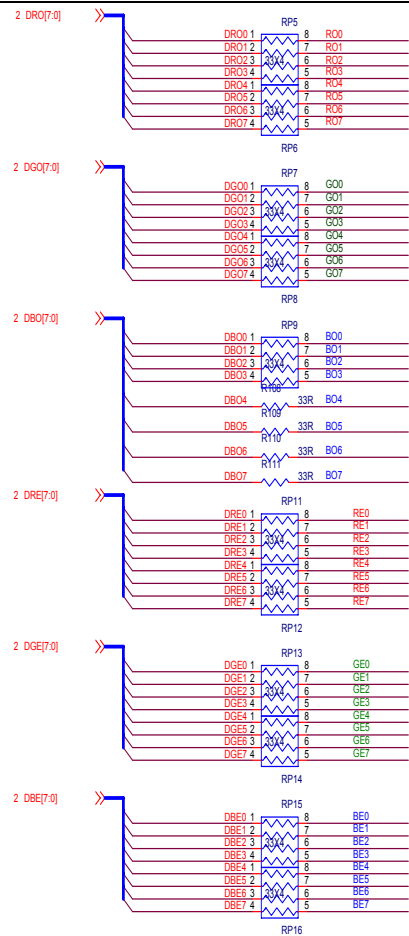




Proview Electronics (Taiwan) Co., LTD.
 6F, NO.1, Pau-Sheng Rd., Yung-Ho City,
 Taipei County, Taiwan R.O.C.
 Tel: 886-2-2231-6789 Fax: 886-2-2232-4613

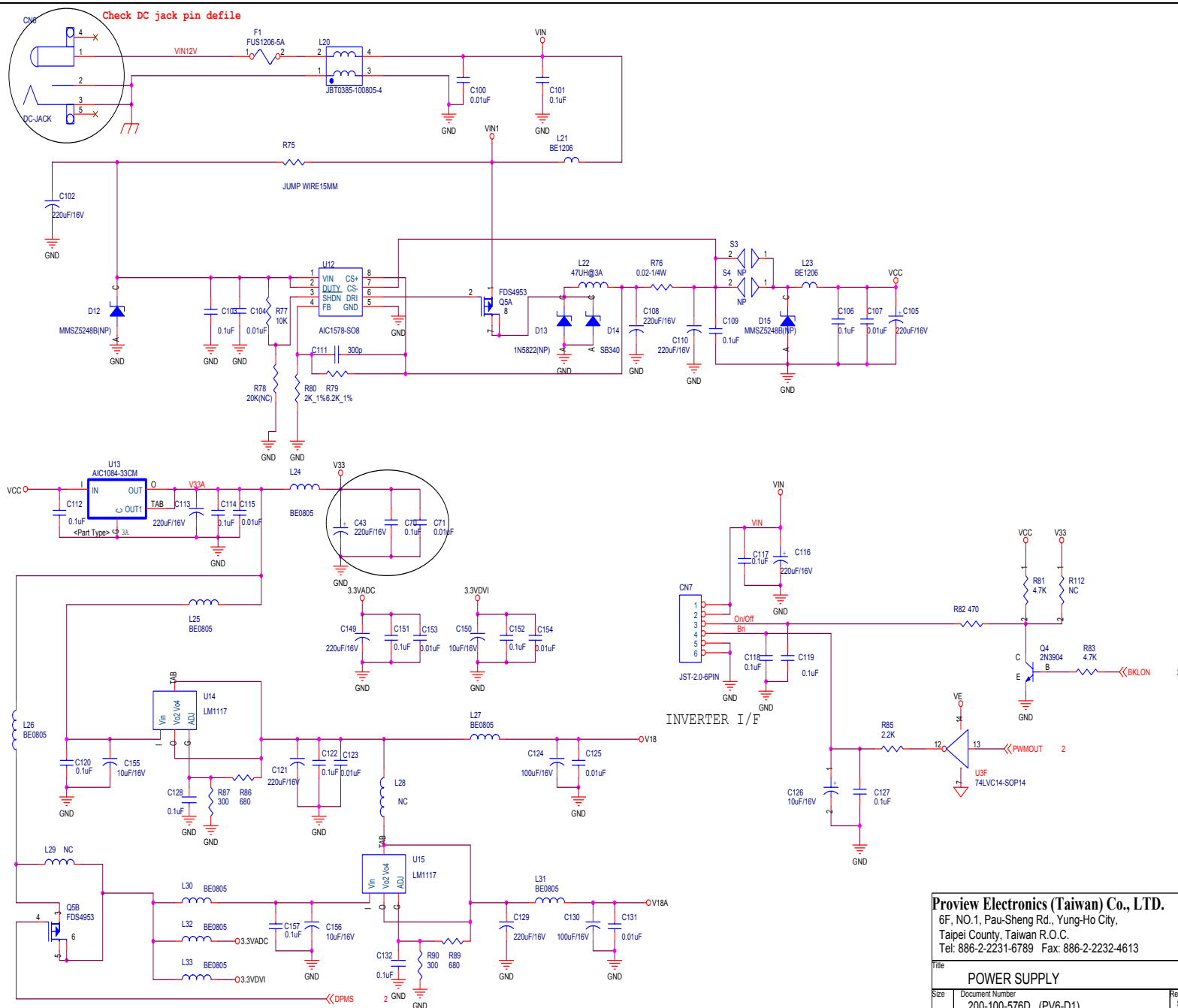
Title		
A/D + Scaler		
Size	Document Number	Rev
	200-100-576D (PV6-D1)	S3
Date:	Friday, December 13, 2002	Sheet 2 of 6





Proview Electronics (Taiwan) Co., LTD.
 6F, NO.1, Pau-Sheng Rd., Yung-Ho City,
 Taipei County, Taiwan R.O.C.
 Tel: 886-2-2231-6789 Fax: 886-2-2232-4613

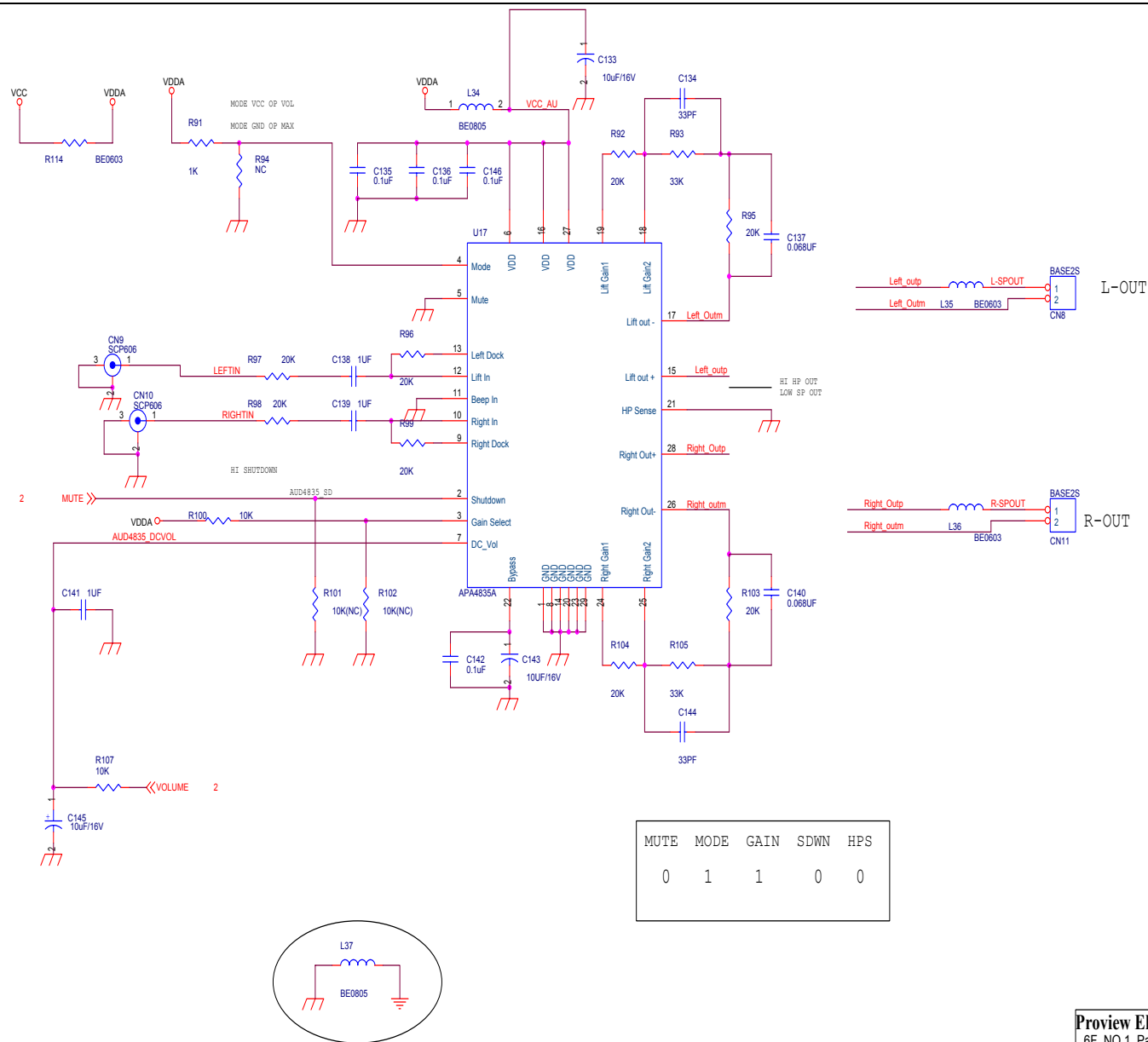
Title		
OUTPUT CONNECTOR		
Size	Document Number	Rev
200-100-576D (PV6-D1)		S3
Date:	Friday, December 13, 2002	Sheet 4 of 6



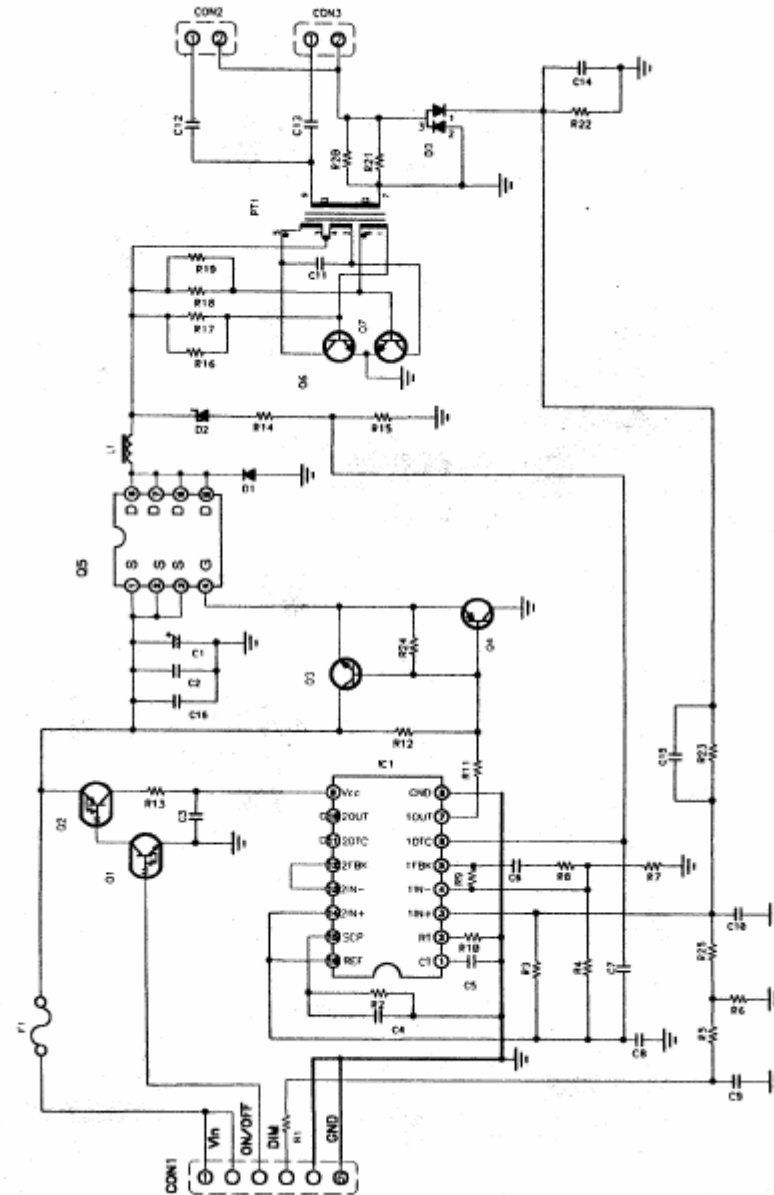
Proview Electronics (Taiwan) Co., LTD.

6F, NO.1, Pau-Sheng Rd., Yung-Ho City,
Taipei County, Taiwan R.O.C.
Tel: 886-2-2231-6789 Fax: 886-2-2232-4613

POWER SUPPLY		
Size	Document Number	Rev
	200-100-576D (PV6-D1)	S3
Date:	Friday, December 13, 2002	Sheet 5 of 6



7.CIRCUIT DIAGRAM:



Memu..