

972

Service Manual

TABLE OF CONTENTS

SERVICE WARNING	2
A. IMPORTANT SAFETY INSTRUCTION	2
B. INSTALLATION	3
C. CONTROL LOCATION	4
D. OPERATION Direct– Access Features	5
E. SPECIFICATIONS	7
F. TIMING CHART	8
G. CONDUCTION VIEW	10
H. ADJUSTMENT PROCEDURE	13
I. TROUBLE SHOOTING HINTS	14
J. REPLACEMENT PARTS LIST	18
K. BLOCK DIAGRAM	22
L. SCHEMATIC DIAGRAM	23

WARNING

To prevent from fire or shock hazard,do not expose monitor to any rain or any form of water.High voltage is inside the monitor so please do not remove the back cover of the cabinet if you are not a qualified monitor engineer.Contact the local dealer or the nearest **Proview** branch office if you need help.

A. IMPORTANT SAFETY INSTRUCTION

Prior to using this service manual,please ensure that you have carefully followed all the procedures outlined in the user's manual for this product.

1. Read all of these instructions.
2. Save these instructions.
3. Follow all warnings and instructions a marked on the product.
4. Unplug this product from the wall outlet before cleaning.Do not use liquid cleaners or aerosol cleaners, use a damp cloth for cleaning.
5. Do not use this product near water.
6. Do not place this product on an unstable cart,stand or table.The product may fall,causing serious damage to the product.
7. Slots and openings in the cabinet and the back or bottom are provided for ventilation,to ensure reliable operation of the product and to protect it from overheating,those openings must not be blocked or covered.The openings should never be blocked by placing the product on a bed,sofa, rug, or other similar surface.This product should not be placed in a built-in installation less proper ventilation is provided.
8. This products should be operated from the type of power source indicated on the marketin label. If you are not sure of the type of power available, consult your dealer or local power company
9. This product is equipped with a 3-wire grounding type plug,a plug having a third (grounding) pin.This plug will only fit into a grounding-type power outlet.This is a safety feature,if you are unable to insert the plug into the outlet,contact your electrician to replace your obsolete outlet.Do not defeat the purpose of the grounding-type plug.
10. Do not allow anything to rest on the power cord.Do not locate this product where persons will walk on the cord.
11. If an extension cord is used with this product,make sure that the total of the ampere ratings on the product plugged into the extension cord to the waplugged into outlet does not exceed 15 ampere.
12. Never push objects of any kind into this product through cabinet slots as they may touch dangerous voltage points or short out parts that could result in a risk of fire or electric shock.Never spill liquid of any kind on the product.
13. Do not attempt to service this product yourself,as opening or removing covers may expose you to dangerous voltage points or other risks.Refer all servicing to service personnel.
14. Unplug this product from the wall outlet and refer servicing to qualified service personnel under the following conditions.
 - a. When the power cord or plug is damaged or frayed.
 - b. If liquid has been spilled into the product.
 - c. If the product has been exposed to rain or water.
 - d. If the product does not operate normally,when the operating instructions are followed.Adjust only those controls that are covered by the operating instructions since improper adjustment of other controls may result in damage and will often require extension work by a qualified technician to restore the product to normal operation.
 - e. If the product has been dropped or the cabinet has been damaged.
 - f. If the product exhibits a distinct change in performance,indicating a need for service.

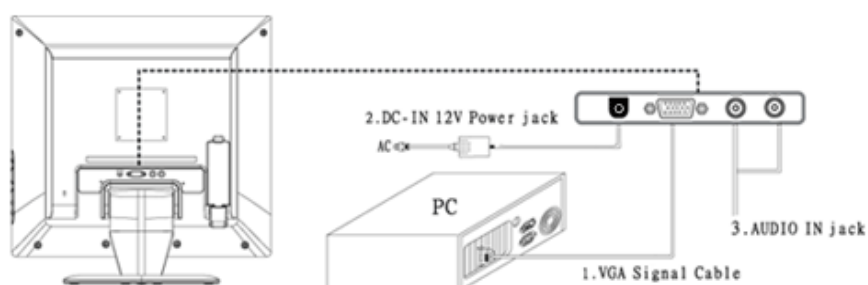
B. Installation

B-1 Connect your monitor to computer

- 1 Turn off your computer and unplug its power cable.
- 2 Connect the signal cable to the video port on the back of your computer.
- 3 Connect the power cable for your monitor to the DC adapter and connect to the adapter the DC power jack on the back of your monitor.

Note : You must use the supplied power adapter.

- 4 Speaker connect one end of the audio cable to the connector on the back of the monitor AUDIO IN, and the other end to the sound card of the computer LINE OUT .
- 5 Plug the computer and monitor power cables into a nearby outlet.
- 6 Turn your computer and monitor on, if your monitor display an image, you have successfully installed the monitor. If the monitor does not display an image, check all the connections and repeat steps 1-5 above.



Connecting the monitor to the computer and the power supply

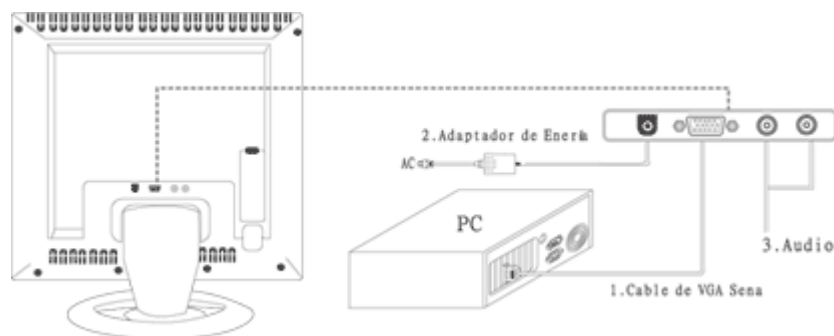
C. CONTROL LOCATION

Font control panel



- 1. Menu Button
- 2. Select Button
- 3. Auto Button
- 4. Power Button
- 5. LED (Power Display)

Rear panel



- 1. VGA Signal Cable
- 2. Power jack
- 3. Line in jack

D. OPERATION Direct – Access Features

D-1 Power ON/OFF Switch

This button is used to turn the monitor ON and OFF.

NOTE : The ON/OFF switch does not disconnect the device from the main voltage.

To completely disconnect the mains voltage, please remove the power plug from the socket.



D-2 Power indicator

This indicator lights up green when the monitor operates normally. If the monitor is in power saving mode, this indicator change to amber when monitor is turn off, this indicator change to dark.

D-3 AUTO

Press AUTO button and release the auto adjust display mode will tune to the utmost performance according to VGA setting.,

D-4 Volume

This feature adjust the  button to increase the volume and adjust  button to decrease the volume.

D-5 Menu Features

The following features can all be accessed using your monitors on screen menu system.

When finished making adjustments to a feature, push the exit button to turn off the menu.

Step 1. Press **MENU** Button to activate the OSD menu.

Step 2. Press CH Button ▲ or CH Button ▼ to scroll through and highlight the main function list.

Step 3. When the desired function is highlight, press **MENU** Button a second time, the sub-menu(second page) will change to a sub-menu near main menu.

Step 4. Press **MENU** Button and release again. The highlight of adjusted items and scroll bar will change color from pink to blue.

Step 5. To make your adjustment, press CH Button ▲ or CH Button ▼ clockwise to increase or counterclockwise to decrease the setting.

Step 6. Press and release **MENU** Button again to store the change. You can select other functions to adjust by pressing CH Button ▲ or CH Button ▼. You can also select the **EXIT** icon and press **MENU** Button to go back to the main menu.

Step 7. Report step 2 through 6 to make further adjustments.

D-6 OSD menu

1. Main menu

OSD main menu of controls gives you an overview of the selection of controls available. When you want to make adjustment of the screen image, press and release button Menu



2. Brightness

Adjust the overall image and background screen brightness.

3. Contrast

Adjust the image brightness in relation to the background.

4. H. Position

To move the picture image horizontally left or right.

5. V. Position

To move the picture image vertically up or down.

6. H Size

To increase or decrease the horizontal size of image.

7. Phase

To improve focus clarity an image stability.

8. Color Select

Color Select Menu



Select user mode

User color you can adjust to individual color gum intensity by yourself. Increase or decrease red, green or blue depending upon which color is selected.

Cool

This control adjusts the color temperature of the screen image this item are preset by factory, you can not adjust these setting. The performance is bluer and brighter.

Warm

The performance is redder ad closer to paper white.

9. Auto

Auto adjust display mode to its utmost performance according to VGA setting. In the event of the display image needs further adjustment.

10. Reset

Reset the currently highlighted control to the factory setting. User must be using factory preset video mode to use this function.

11. Language

You can choose one of the eight language you need.

12. OSD

You can choose where you would like OSD image to appear on your screen.

H Position :

To move the OSD image horizontally left or right.

V Position :

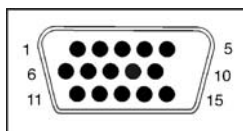
To move the OSD image vertically up or down.

Exit :

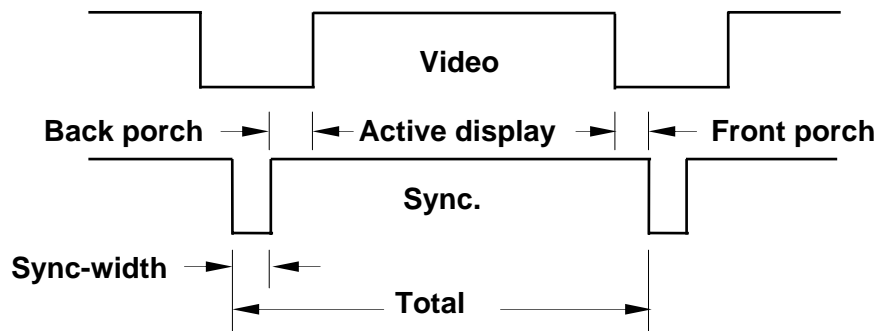
To exit the menu.

E. SPECIFICATIONS

1. Maximum Resolution	1280 x 1024 @ 75Hz
2. Recommend Resolution	1280 x 1024 @ 60Hz
3. Synchronization Range Horizontal Vertical	31 – 80 KHz 60– 75 Hz
4. Active Display Area	376mm (H) x 301mm (V)
5. Dot Pitch	0.294(H) x 0.294(V) mm
6. Support display colors	16.7M color
7. Contrast Ratio (Typical)	600
8. Luminance of White	250cd/m²
9. Bandwidth	135MHz
10. User Control	6 Key Switch
11. OSD Function	Brightness, Conrast, H-Pos, V-Pos, H. Size, Phase, Color Select, Auto, Reset, Language, OSD Adjust, Exit
12. View Angle CR=5 Horizontal Vertical	85 , 85 Degrees 85 , 85 Degrees
13. Power Source	100 – 240 Vac 60 / 50 Hz
14. Power Consumption	60W (max.)
15. Connection Type	15 Pin D Type
16. Input Signal Video Sync.	Analog R.G.B. , 0.7Vp-p / 75 Ohms TTL level,positive or negative polarity
17. Color Temperature	Cool (9300° K) / Warm (6500° K)
18. Dimension (WxHxD) Packing Set	525x510x155mm 438x440x177mm
19. Monitor Weight	8.9Kg / 6.9Kg
20. Base Operation Tilt	0 / + 15 degree
21. Power Saving ON STAND BY OFF	< 60W < 5W < 5W
22. Signal Connector Pin Assignment	<div><div><div><div><div></div><div></div><div></div><div></div><div></div><div></div><div></div><div></div><div></div><div></div><div></div></div><div></div><div></div><div></div><div></div><div></div><div></div><div></div><div></div><div></div><div></div><div></div><div></div><div></div><div></div><div></div><div></div><div></div><div></div><div></div><div></div><div></div><div></div><div></div><div></div><div></div><div></div><div></div><div></div><div></div><div></div><div></div><div></div><div></div><div></div><div></div><div></div><div></div><div></div><div></div><div></div><div></div><div></div><div></div><div></div><div></div><div></div><div></div><div></div><div></div><div></div><div></div><div></div><div></div><div></div><div></div><div></div><div></div><div></div><div></div><div></div><div></div><div></div><div></div><div></div><div></div><div></div><div></div><div></div><div></div><div></div><div></div><div></div><div></div><div></div><div></div><div></div><div></div><div></div><div></div><div></div><div></div><div></div><div></div><div></div><div></div><div></div><div></div><div></div><div></div><div></div><div></div><div></div><div></div><div></div><div></div><div></div><div></div><div></div><div></div><div></div><div></div><div></div><div></div><div></div><div></div><div></div><div></div><div></div><div></div><div></div><div></div><div></div><div></div><div></div><div></div><div></div><div></div><div></div><div></div><div></div><div></div><div></div><div></div><div></div><div></div><div></div><div></div><div></div><div></div><div></div><div></div><div></div><div></div><div></div><div></div><div></div><div></div><div></div><div></div><div></div><div></div><div></div><div></div><div></div><div></div><div></div><div></div><div></div><div></div><div></div><div></div><div></div><div></div><div></div><div></div><div></div><div></div><div></div><div></div><div></div><div></div><div></div><div></div><div></div><div></div><div></div><div></div><div></div><div></div><div></div><div></div><div></div><div></div><div></div><div></div><div></div><div></div><div></div><div></div><div></div><div></div><div></div><div></div><div></div><div></div><div></div><div></div><div></div><div></div><div></div><div></div><div></div><div></div><div></div><div></div><div></div><div></div><div></div><div></div><div></div><div></div><div></div><div></div><div></div><div></div><div></div><div></div><div></div><div></div><div></div><div></div><div></div><div></div><div></div><div></div><div></div><div></div><div></div><div></div><div></div><div></div><div></div><div></div><div></div><div></div><div></div><div></div><div></div><div></div><div></div><div></div><div></div><div></div><div></div><div></div><div></div><div></div><div></div><div></div><div></div><div></div><div></div><div></div><div></div><div></div><div></div><div></div><div></div><div></div><div></div><div></div><div></div><div></div><div></div><div></div><div></div><div></div><div></div><div></div><div></div><div></div><div></div><div></div><div></div><div></div><div></div><div></div><div></div><div></div><div></div><div></div><div></div><div></div><div></div><div></div><div></div><div></div><div></div><div></div><div></div><div></div><div></div><div></div><div></div><div></div><div></div><div></div><div></div><div></div><div></div><div></div><div></div><div></div><div></div><div></div><div></div><div></div><div></div><div></div><div></div><div></div><div></div><div></div><div></div><div></div><div></div><div></div><div></div><div></div><div></div><div></div><div></div><div></div><div></div><div></div><div></div><div></div><div></div><div></div><div></div><div></div><div></div><div></div><div></div><div></div><div></div><div></div><div></div><div></div><div></div><div></div><div></div><div></div><div></div><div></div><div></div><div></div><div></div><div></div><div></div><div></div><div></div><div></div><div></div><div></div><div></div><div></div><div></div><div></div><div></div><div></div><div></div><div></div><div></div><div></div><div></div><div></div><div></div><div></div><div></div><div></div><div></div><div></div><div></div><div></div><div></div><div></div><div></div><div></div><div></div><div></div><div></div><div></div><div></div><div></div><div></div><div></div><div></div><div></div><div></div><div></div><div></div><div></div><div></div><div></div><div></div><div></div><div></div><div></div><div></div><div></div><div></div><div></div><div></div><div></div><div></div><div></div><div></div><div></div><div></div><div></div><div></div><div></div><div></div><div></div><div></div><div></div><div></div><div></div><div></div><div></div><div></div><div></div><div></div><div></div><div></div><div></div><div></div><div></div><div></div><div></div><div></div><div></div><div></div><div></div><div></div><div></div><div></div><div></div><div></div><div></div><div></div><div></div><div></div><div></div><div></div><div></div><div></div><div></div><div></div><div></div><div></div><div></div><div></div><div></div><div></div><div></div><div></div><div></div><div></div><div></div><div></div><div></div><div></div><div></div><div></div><div></div><div></div><div></div><div></div><div></div><div></div><div></div><div></div><div></div><div></div><div></div><div></div><div></div><div></div><div></div><div></div><div></div><div></div><div></div><div></div><div></div><div></div><div></div><div></div><div></div><div></div><div></div><div></div><div></div><div></div><div></div><div></div><div></div><div></div><div></div><div></div><div></div><div></div><div></div><div></div><div></div><div></div><div></div><div></div><div></div><div></div><div></div><div></div><div></div><div></div><div></div><div></div><div></div><div></div><div></div><div></div><div></div><div></div><div></div><div></div><div></div><div></div><div></div><div></div><div></div><div></div><div></div><div></div><div></div><div></div><div></div><div></div><div></div><div></div><div></div><div></div><div></div><div></div><div></div><div></div><div></div><div></div><div></div><div></div><div></div><div></div><div></div><div></div><div></div><div></div><div></div><div></div><div></div><div></div><div></div><div></div><div></div><div></div><div></div><div></div><div></div><div></div><div></div><div></div><div></div><div></div><div></div><div></div><div></div><div></div><div></div><div></div><div></div><div></div><div></div><div></div><div></div><div></div><div></div><div></div><div></div><div></div><div></div><div></div><div></div><div></div><div></div><div></div><div></div><div></div><div></div><div></div><div></div><div></div><div></div><div></div><div></div><div></div><div></div><div></div><div></div><div></div><div></div><div></div><div></div><div></div><div></div><div></div><div></div><div></div><div></div><div></div><div></div><div></div><div></div><div></div><div></div><div></div><div></div><div></div><div></div><div></div><div></div><div></div><div></div><div></div><div></div><div></div><div></div><div></div><div></div><div></div><div></div><div></div><div></div><div></div><div></div><div></div><div></div><div></div><div></div><div></div><div></div><div></div><div></div><div></div><div></div><div></div><div></div><div></div><div></div><div></div><div></div><div></div><div></div><div></div><div></div><div></div><div></div><div></div><div></div><div></div><div></div><div></div><div></div><div></div><div></div><div></div><div></div><div></div><div></div><div></div><div></div><div></div><div></div><div></div><div></div><div></div><div></div><div></div><div></div><div></div><div></div><div></div><div></div><div></div><div></div><div></div><div></div><div></div><div></div><div></div><div></div><div></div><div></div><div></div><div></div><div></div><div></div><div></div><div></div><div></div><div></div><div></div><div></div><div></div><div></div><div></div><div></div><div></div><div></div><div></div><div></div><div></div><div></div><div></div><div></div><div></div><div></div><div></div><div></div><div></div><div></div><div></div><div></div><div></div><div></div><div></div><div></div><div></div><div></div><div></div><div></div><div></div><div></div><div></div><div></div><div></div><div></div><div></div><div></div><div></div><div></div><div></div><div></div><div></div><div></div><div></div><div></div><div></div><div></div><div></div><div></div><div></div><div></div><div></div><div></div><div></div><div></div><div></div><div></div><div></div><div></div><div></div><div></div><div></div><div></div><div></div><div></div><div></div><div></div><div></div><div></div><div></div><div></div><div></div><div></div><div></div><div></div><div></div><div></div><div></div><div></div><div></div><div></div><div></div><div></div><div></div><div></div><div></div><div></div><div></div><div></div><div></div><div></div><div></div><div></div><div></div><div></div><div></div><div></div><div></div><div></div><div></div><div></div><div></div><div></div><div></div><div></div><div></div><div></div><div></div><div></div><div></div><div></div><div></div><div></div><div></div><div></div><div></div><div></div><div></div><div></div><div></div><div></div><div></div><div></div><div></div><div></div><div></div><div></div><div></div><div></div><div></div><div></div><div></div><div></div><div></div><div></div><div></div><div></div><div></div><div></div><div></div><div></div><div></div><div></div><div></div><div></div><div></div><div></div><div></div><div></div><div></div><div></div><div></div><div></div><div></div><div></div><div></div><div></div><div></div><div></div><div></div><div></div><div></div><div></div><div></div><div></div><div></div><div></div><div></div><div></div><div></div><div></div><div></div><div></div><div></div><div></div><div></div><div></div><div></div><div></div><div></div><div></div><div></div><div></div><div></div><div></div><div></div><div></div><div></div><div></div><div></div><div></div><div></div><div></div><div></div><div></div><div></div><div></div><div></div><div></div><div></div><div></div><div></div><div></div><div></div><div></div><div></div><div></div><div></div><div></div><div></div><div></div><div></div><div></div><div></div><div></div><div></div><div></div><div></div><div></div><div></div><div></div><div></div><div></div><div></div><div></div><div></div><div></div><div></div><div></div><div></div><div></div><div></div><div></div><div></div><div></div><div></div><div></div><div></div><div></div><div></div><div></div><div></div><div></div><div></div><div></div><div></div><div></div><div></div><div></div><div></div><div></div></div></div></div>



F.TIMING CHART

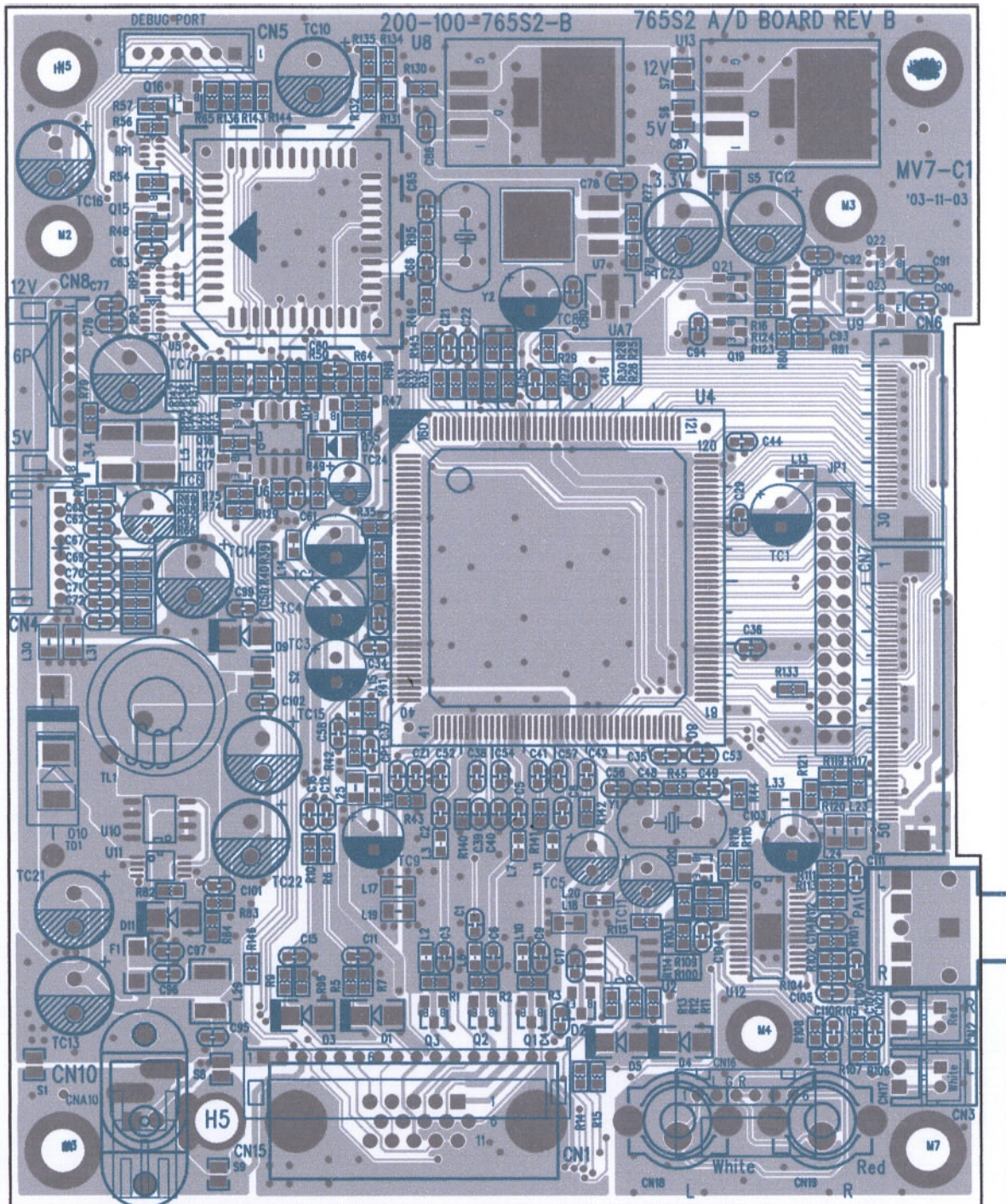


Preset Modes	VGA 720X400	VGA 640X480	VESA 640X480	VESA 640X480	VESA 800X600	VESA 800X600	VESA 800X600
Pixel clock (MHz)	28.325	25.175	31.500	31.500	36.000	40.000	50.000
H-Frequency (KHz)	31.472	31.469	37.861	37.500	35.156	37.879	48.077
H-Total (μs)	31.774	31.778	26.413	26.667	28.444	26.400	20.800
H-Active Display (μs)	25.419	25.422	20.317	20.317	22.222	20.000	16.000
H-Blanking (μs)	6.355	6.356	6.095	6.349	6.222	6.400	4.800
Front Porch (μs)	0.635	0.636	0.762	0.508	0.667	1.000	1.120
H-Sync-width (μs)	3.813	3.813	1.270	2.032	2.000	3.200	2.400
H-Back Porch (μs)	1.906	1.907	4.063	3.810	3.556	2.200	1.280
V-Frequency (Hz)	70.1	59.94	72.81	75.0	56.25	60.3	72.2
V-Total (ms)	14.267	16.683	13.735	13.333	17.778	16.579	13.853
V-Active Display (ms)	12.710	15.253	12.678	12.800	17.067	15.840	12.480
V-Blanking (ms)	1.557	1.430	1.057	0.533	0.711	0.739	1.373
V-Front Porch (ms)	0.413	0.318	0.238	0.027	0.028	0.026	0.770
V-Sync-width (ms)	0.064	0.064	0.079	0.080	0.057	0.106	0.125
V-Back Porch (ms)	1.080	1.049	0.740	0.427	0.626	0.607	0.478
H/V Sync. Polarity	- +	- -	- -	- -	+ +	+ +	+ +
Interlace	NONE	NONE	NONE	NONE	NONE	NONE	NONE

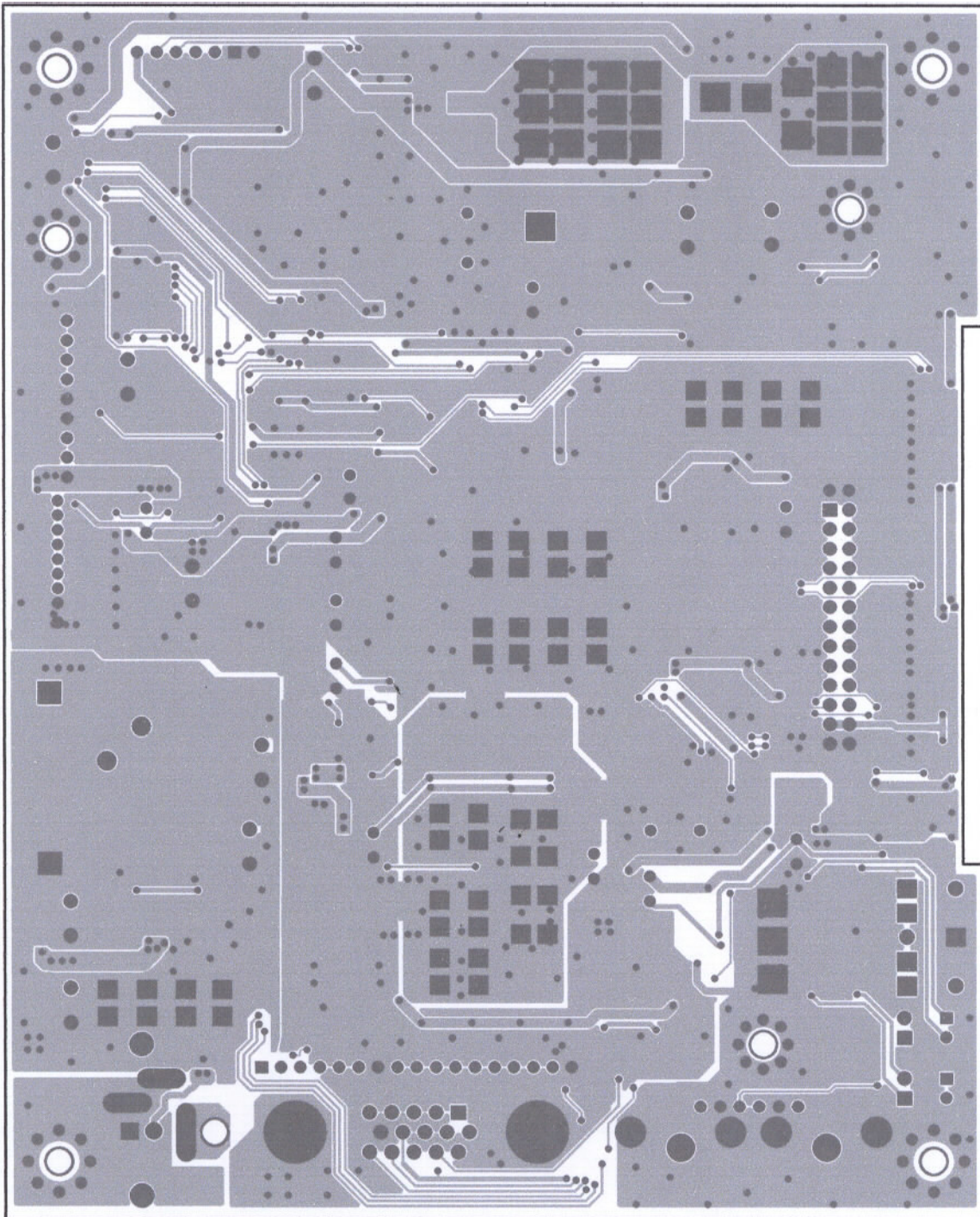
Modes \ Preset	VESA 800X600	VESA 1024X768	VESA 1024X768	VESA 1024X768	VESA 1280X1024	VESA 1280X1024
Pixel clock (MHz)	49.500	65.000	75.000	78.750	108.00	135.00
H-Frequency (KHz)	46.875	48.363	56.476	60.023	63.981	79.976
H-Total (μs)	21.333	20.677	17.707	16.660	15.630	12.540
H-Active Display (μs)	16.162	15.754	13.563	13.003	11.852	9.481
H-Blanking (μs)	5.172	4.923	4.053	3.657	3.778	3.022
Front Porch (μs)	0.323	0.369	0.320	0.203	0.444	0.119
H-Sync-width (μs)	1.616	2.092	1.813	1.219	1.037	1.067
H-Back Porch (μs)	3.232	2.462	1.920	2.235	2.296	1.837
V-Frequency (Hz)	75.0	60.0	70.1	75.0	60.0	75.0
V-Total (ms)	13.333	16.666	14.272	13.328	16.661	13.329
V-Active Display (ms)	12.800	15.880	13.599	12.795	16.005	12.804
V-Blanking (ms)	0.533	0.786	0.673	0.533	0.656	0.525
V-Front Porch (ms)	0.021	0.062	0.053	0.017	0.016	0.013
V-Sync-width (ms)	0.064	0.124	0.106	0.050	0.047	0.038
V-Back Porch (ms)	0.448	0.600	0.513	0.466	0.594	0.475
H/V Sync. Polarity	+ +	- -	- -	+ +	+ +	+ +
Interlace	NONE	NONE	NONE	NONE	NONE	NONE

G. CONDUCTION VIEW

MAIN BOARD (Component Side)



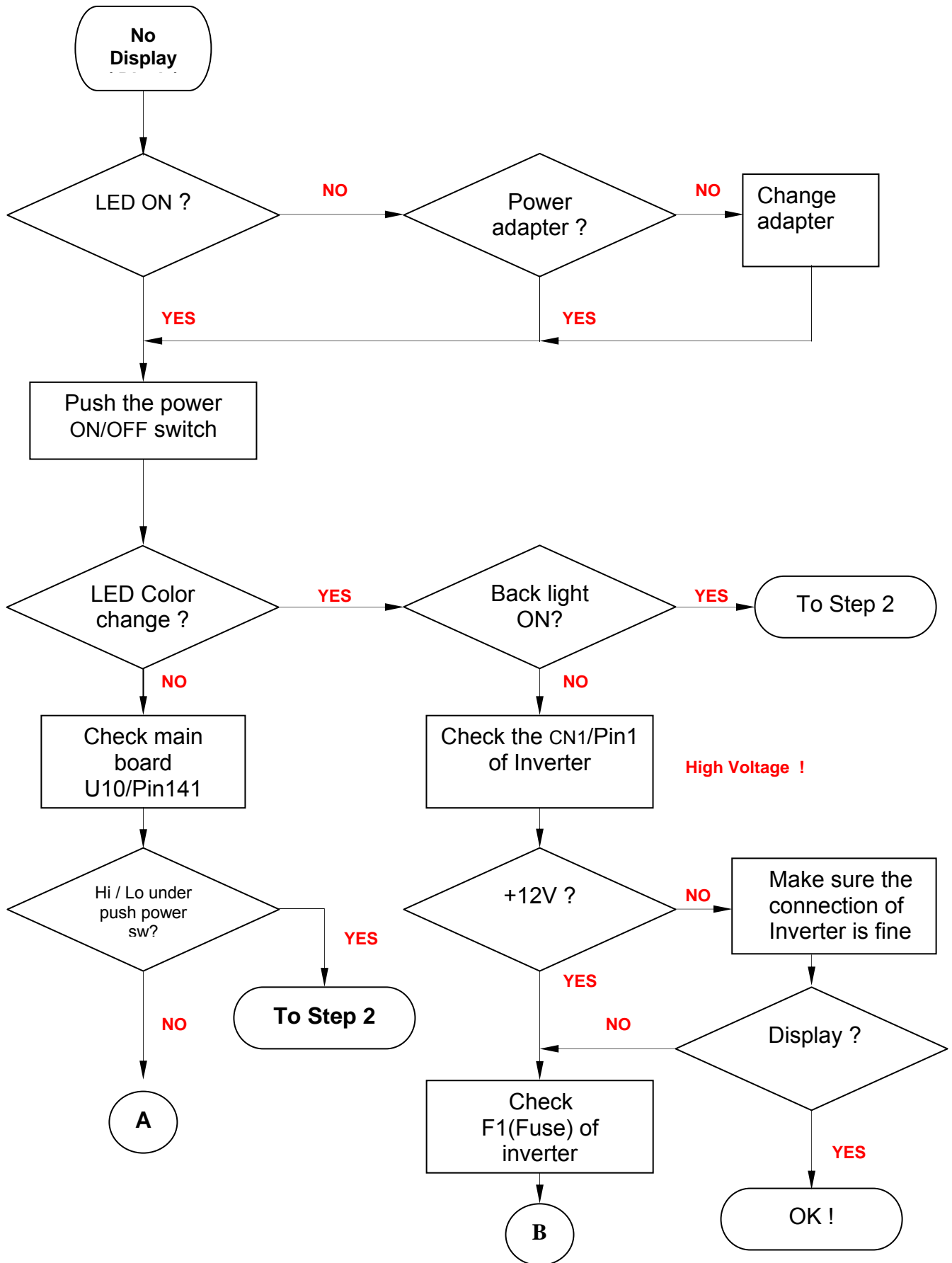
MAIN BOARD (Solid Side)

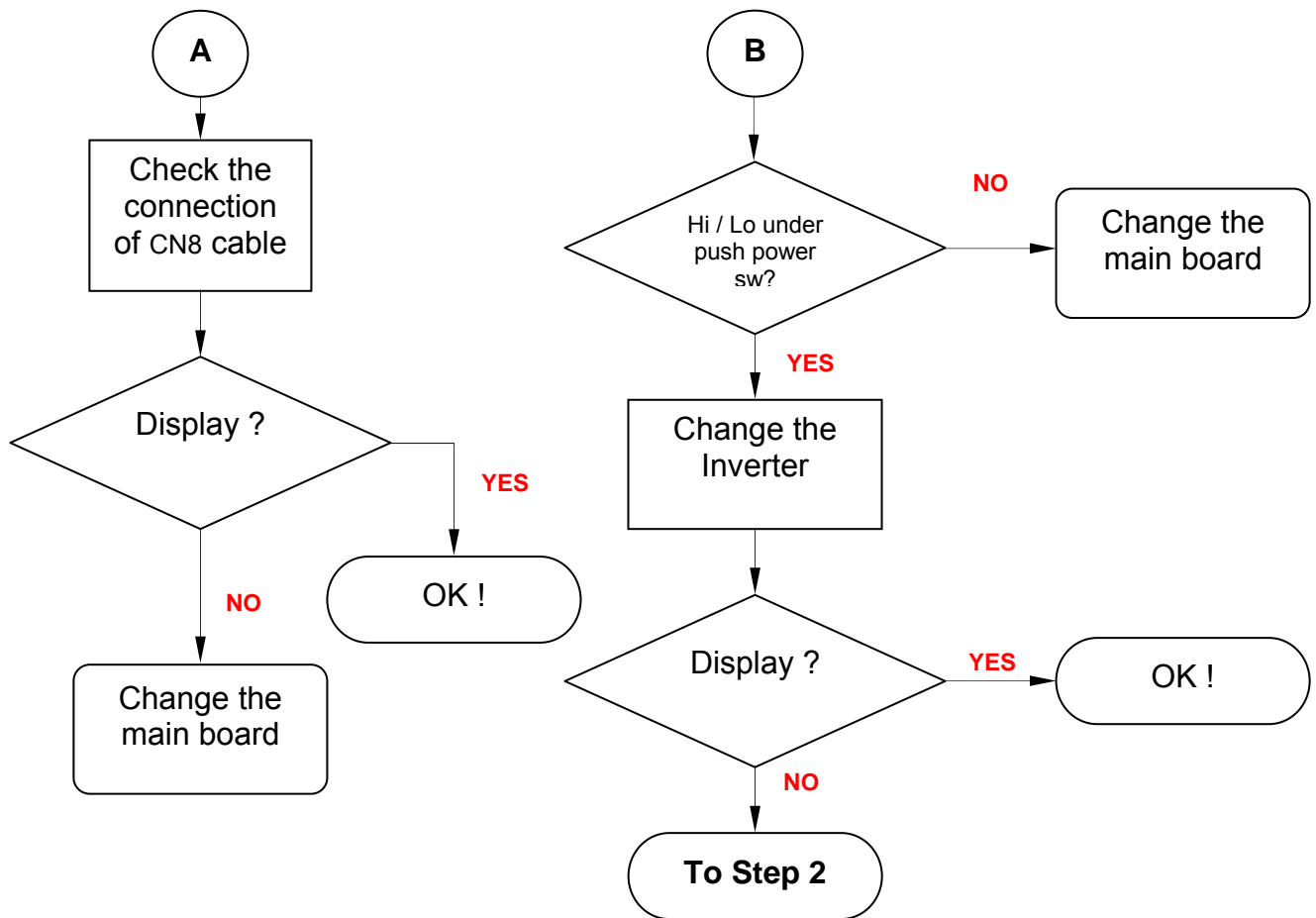


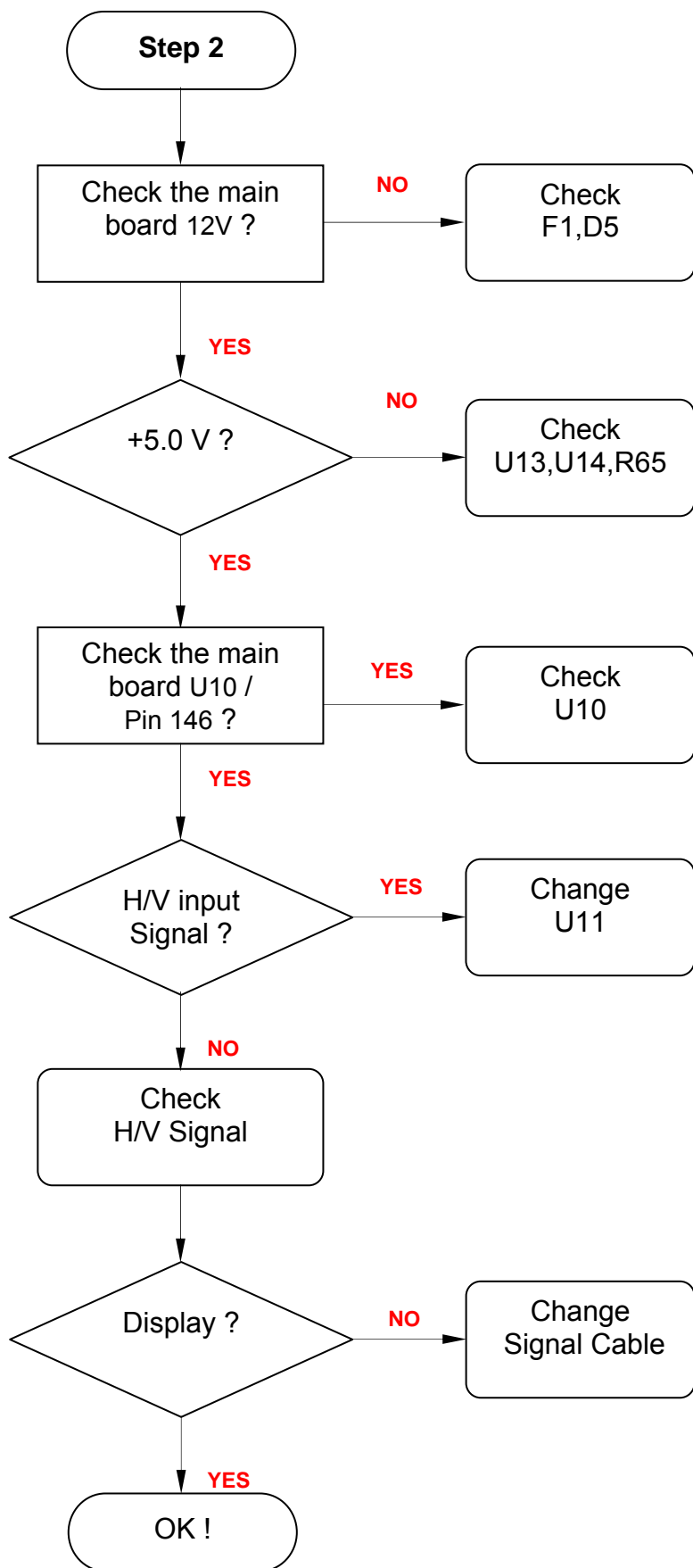
H. ADJUSTMENT PROCEDURE

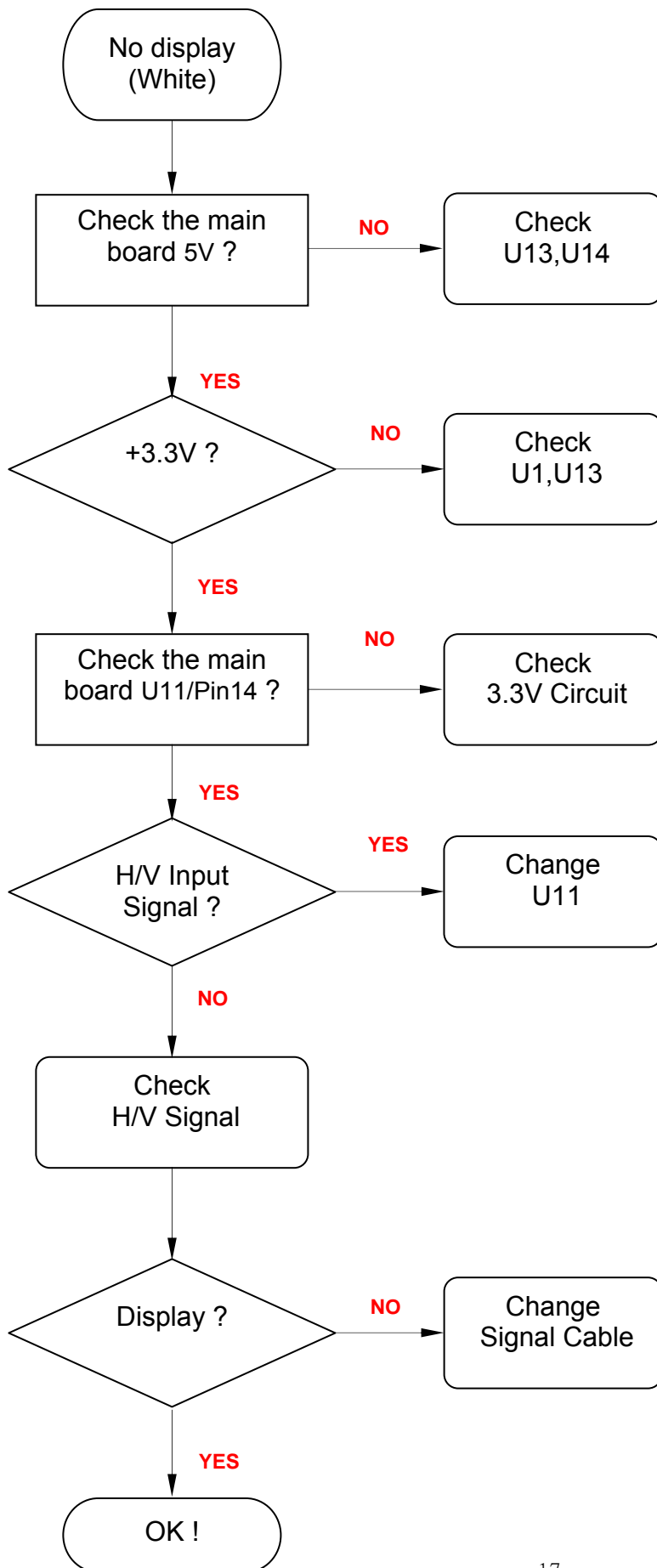
ITEM Program Menu.		# Test Meter * Test Point @ Pattern	Operation	Check Value
A	B+ Check	# Digital Voltmeter * CN7 @ Crosshatch Pattern (31.5KHz,640x480)	1. Plug power cable into the adapter, check adapter power indicator light up green. 2. Make sure the voltage of the power plug (CN7) on the main PCB to the value shown at right.	12.0V ±0.2V
B	Power Saving Check	# Wattmeter # PC or Pattern generator @ Crosshatch Pattern (31.5KHz,640x480)	1. Unplug the signal cable into the monitor. 2. Turn the power switch of the monitor ON . 3. Check monitor power indicator light up orange. 4. Make sure the wattmeter value shown at right. 5. OSD will be display " NO SIGNAL " Picture.	< 2.5W
C	Into Factory mode	# PC or Pattern generator @ Crosshatch Pattern (31.5KHz,640x480)	1. Hold ◀ key, then turn the power switch of the monitor OFF . 2. Hold ▶ key, then turn the power switch of the monitor ON . 3. You can into factory adjustment mode.	
D	Auto mode Check	# PC or Pattern generator @ Crosshatch Pattern (1024x768/60Hz)	1. Press and release the MENU knob to activate the OSD menu. 2. Move the OSD to the AUTO function, press MENU key auto adjust display mode to its utmost performance according to VGA setting. 3. In the event of the display image needs further adjustment	
E	White Balance Adjust	# PC or Pattern generator @ White Pattern (1024x768/60Hz)	1. Move the OSD to the COLOR mode (AUTO COLOR) 2. set color is 9300°K using the OSD, Check the value shown at right. $Y = 220 \pm 0.1FL$ $x = 0.283 \pm 0.01$ $y = 0.297 \pm 0.01$ 3. set color is 6500°K using the OSD, Check the value shown at right. $Y = 220 \pm 0.1FL$ $x = 0.313 \pm 0.01$ $y = 0.329 \pm 0.01$	
F	OSD Language Setting	# PC or Pattern generator	1. Move the OSD to the LANGUAGE mode. 2. You can choose one of the eight language you need	

I. TROUBLE SHOOTING HINTS









J. REPLACEMENT PARTS LIST

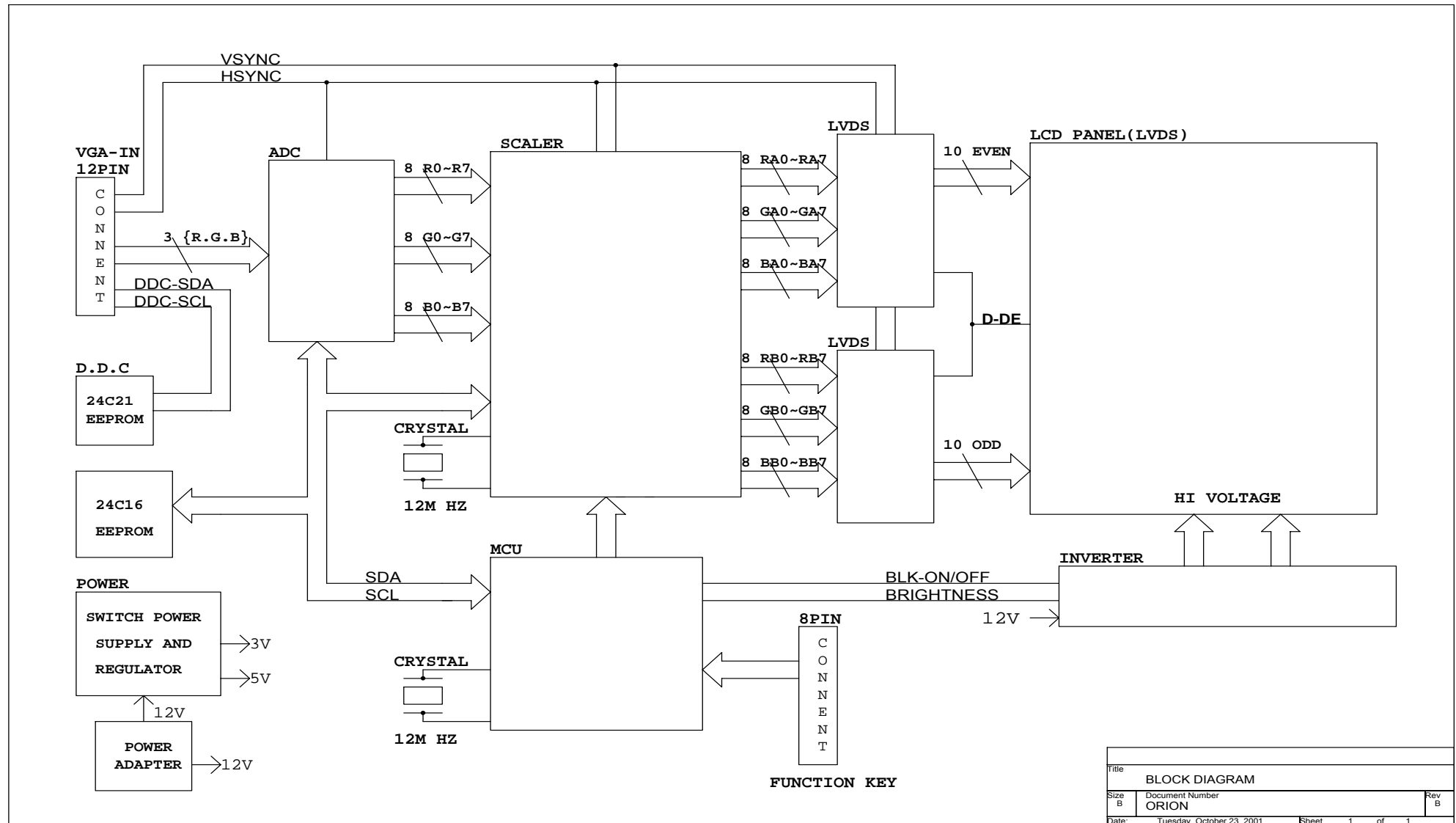
NO	Parts No.	Description	Part Location	Q'ty
	988-AZ0-1006	HD972		
1	002-001-TCO9	TCO99 Declaration		1
2	003-401-0565	Carton Label 90x70mm	MAG	1
3	003-A51-HD772	I/O Label		1
4	003-H01-AS576	TCO99 Label	For Front Bezel	1
5	005-503-HD972	Carton	For PROVIEW Logo	1
7	153-005-0765	Back Label	No Brand	1
8	160-02L-HD772	END Cap L EPS		1
9	160-02R-HD772	END Cap R EPS		1
10	170-000-0848C	PE Bag 0.07mm 14*30.5cm		1
11	170-001-LCD5	LCD PE Bag	550 x 800 x 0.06mm	1
12	170-005-VM541	PE Bag 300 x 200mm	For User Manual	1
13	170-500-AS776	Base Bag 360x360mm 0.03t	For Attachment	1
14	600-151-1000A	Power cord	1.5m Black VDE	
15	621-151-2500C	Audio Cable		1
16	846-120-E0AL-SA	Adapter LSE 60W		1
17	002-U51-HD772-A	User Manual		1
	999-XFA-HD972			
	899-002-HD972-E	HD972 Main Board Ass'y		
1	506-524-LC21	Memory IC 24LC21 SMD	U2	1
2	506-CXX-MVPRL-HN	MRT Scaler IC MVPRL-HN	U4	1
3	481-LCC-0440	SOCKET 44PIN PLCC	PP1	1
4	506-5NM-24C16	24C16 SO8 Memory IC SMD	U6	1
5	506-RLD-1117-A	LD1117 SMD UTC	U7	1
6	506-0AI-CY33	AIC1117-33 3.3V 900ma SMD	U8	1
7	518-1CE-9435	MOSFET CE9435A S08	U9,U10	2
8	506-1LM-3485	LM3485 SOP-8	U11	1
9	506-ALM-4838	Audio Amp IC LM4838	U12	1
10	531-120-49US	Crystal 12 MHz 49US	Y1	1
11	531-110-49US	Crystal 11 MHz 49US	Y2	1
12	528-200-BAV99	Hi Speed Switch Diode BAV99	Q1,Q2,Q3	3
13	518-02N-3906	Tr. 2N3906 SMD	Q14	1
14	518-02N-3904	NPN 2N3904S SMD	Q15,Q16,Q17,Q18,Q19,Q20	6
15	529-350-05R1	Zener Diode MSZ5231B 5.1V	D1,D3,D4,D5	4
16	528-2BA-T54C	SMD Diode BAT54C SOT23	D2	1
17	528-R1N-4148	Diode 1N4148 SOT-34 SMD	D7	1
18	520-007-5822	Diode IN5822 30A/3A	TD1	1
19	745-330-2062-3	Choke 5A 33uH 20%	TL1	1
20	780-103-3000B	FBM-10-160808-300T/KTNG Core	L2,L6,L10	3
21	780-112-8000	SMD Bead 6A 80ohm 1812	L5,L29,L34	3
22	780-103-3000	SMD Bead SBK160808300Y0603 30Ω	L13,L14,L15,L16,L20	5

23	780-104-8000A	SMD Bead	L17,L18,L19,L23,L24,L25,L30,L31,L33	9
24	281-035-3304	RES 33ohm 5% 1/10W 0603 SMD	L3,R5,L7,R9,L11,R14,R15,R72,R73	9
25	506-10E-8050	MCU MXIC MX10E8050I PLCC44	U5	1
26	558-352-5000	SMD Fuse 1206 24V 5A	F1	1
27	485-415-S060A	D-SUB Connector	CN1	1
28	630-008-C001	Header 1.5mm	CN4	1
29	630-006-C001	Base 6Pin Pitch=1.5mm	J1	1
30	409-003-0110	DC Jack 3.5D	CN10	1
31	630-002-1008	Base 2Pin Pitch=2.0mm	CN17,CN20	2
32	409-003-0111-H	RCA Jack 3.5D Red	CN19	1
33	409-003-0112-H	RCA Jack 3.5D White	CN18	1
34	281-031-68014	SMD R 6.8K 0603 1%	R83	1
35	281-031-20014	SMD R 2K 1% 0603	R84	1
36	282-103-2454	RES-NET 10Kohm 5% SMD 8P4R	RP1,RP2,RP3	3
37	281-031-75R04	SMD R 75 0603 1%	R1,R2,R3,R140,R141,R142	6
38	281-035-2224	RES 2.2K 5% 1/10W 0603 SMD	R7	1
39	281-035-1034	RES 10K 5% 1/10W 0603 SMD	R11,R12,R13,R25,R26,R28,R30,R33,R41,R49, R55,R98,R100,R109,R114,R122,R131,R132	18
40	281-035-1024	RES 1K 5% 1/10W 0603 SMD	R27,R29,R42,R47,R54,R56,R65	7
41	281-035-1014	RES 100ohm 5% 1/10W 0603 SMD	R6,R10,R31,R32,R66,R67,R68,R69,R70,R134, R135,R143,R144	13
42	281-035-0R04	RES 0ohm 5% 1/10W 0603 SMD	R35,R39,R40,R43,R120,R121,R130	7
43	281-035-1054	RES 1M 5% 1/10W 0603 SMD	R45,R95	2
44	281-035-3314	RES 330 5% 1/10W 0603 SMD	R48,R57	2
45	281-035-1044	RES 100K 5% 1/10W 0603 SMD	R81	1
46	281-035-1214	RES 120ohm +-5% 1/10W 0603 SMD	R77,R78	2
47	281-035-3334	RES 33K 5% 1/10W 0603 SMD	R76,R102,R113,R116	4
48	281-035-2034	RES 20K 5% 1/10W 0603 SMD	R101,R104,R105,R106,R107,R108,R111,R112	8
49	281-035-7534	SMD R 75K ohm 0603	R82	1
50	381-151-032554	SMD CC 150PF 25V NPO 0603 +-5%	CP1	1
51	382-153-035064	SMD CC 0.015uF/50V X7R 0603 +-10%	CZ1	1
52	385-104-035084	SMD Y5V 0.1uF 50V 0603	C2,C5,C8,C17,C29,C35,C36,C37,C44,C46,C50, C53,C55,C56,C58,C60,C61,C62,C63,C67,C68, C69,C70,C71,C72,C73,C76,C78,C80,C87,C90, C91,C92,C93,C94,C95,C97,C96,C99,C102, C104,C105,C114	43
53	381-220-035054	SMD CC 22pF 50V NPO 0603	C11,C12,C15,C16,C21,C22,C48,C49,C65,C66	10
54	382-103-032564	SMD CC 0.01uF/25V X7R 0603 +-10%	C34,C39,C40,C52,C54,C57,C77,C86	8
55	382-472-032564	Y5V 4700P/25V +80%-20% 0603	C38,C41,C42	3
56	381-331-032554	SMD CC NPO 25V 330PF 5% 0603	C101	1
57	330-470-16255	EC 47uF 16V 105C	TC1,TC6,TC9,TC11,C103	5
58	382-683-031664	SMD CC 0.068uF X7R 0603 +-10%	C106,C111	2
59	330-101-16255	EC.100uF/16V 5mm 105C	TC2,TC3,TC4,TC5,TC8	5
60	330-100-16255	EC 10uF 16V H7mm	TC24	1
61	330-221-16255	EC. 220uF/16V 5mm 105C	TC7,TC10,TC12,TC13,TC14,TC15,TC16,TC21, TC22,TC23	10
62	200-100-765S2-A	M/B For 765S2 REV:A		1

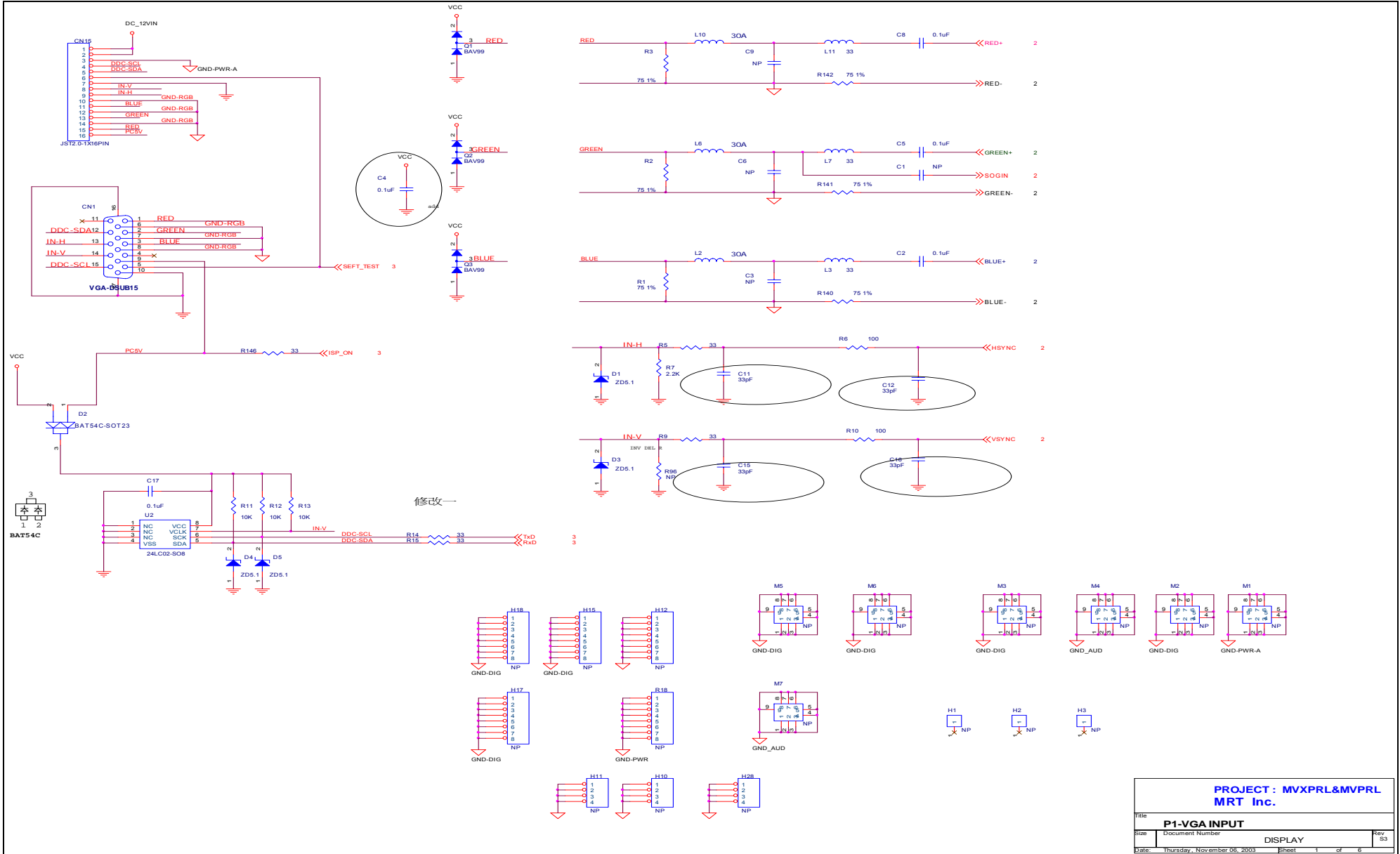
63	152-000-SH570	DC Jack support Nylon		1
64	385-334-031684	Chip-C 0.33u/16V 0603 Y5V	C107,C110	2
65	630-026-R2006	Base 2.0mm	JP1	1
66	529-350-05R6	SMD Zener 5.6V	D9	1
67	120-001-HD772	Heatsink 28x28x5.9mm		1
	899-200-HD772	Power Board Ass'y		
1	200-001-HD572-A	Sensor Board		1
2	401-170-0200	Tact Switch	SW1	1
3	630-005-C001	Base 1.5mm 5Pin	J1	1
4	520-005-L317	LED 3D2P Green/Orange	D1	1
5	154-051-HD772	LED Holder	For D1	1
6	631-001-4004	Wire 4.3D Terminal UL1015 AWG18	Power Ground wire	1
	899-400-HD772	Control Board Ass'y		
1	200-701-0772	Control PCB		1
2	401-170-0200	Tact Switch	SW1,SW2,SW3,SW4,SW5,SW6	6
3	630-005-C001	Base Pitch=1.5mm 5Pin	J1	1
4	705-590-950A	19" AU Panel M190EN02		1
5	849-4AS-0772-A	Inverter		1
	902-HD0-A017			
1	100-006-3062	Screw R3*6mm TP+ISO	Main PCB to Panel Bracket x 4, Inverter to Panel Bracket x2, Shield Coverx2	8
2	100-010-3012	Screw R3x10mm TP1	Main PCB to Bezel x2, Panel Bracket to Bezel x8 Speaker(L) to Bezelx4, Speaker(R) to Bezelx4 Panel Bracket (L) to Bezelx7, Panel Bracket (R) to Bezelx7, Panel Bracket Bottom to Bracketx2, Panel Bracket Bottom to Bezelx3,	28
3	107-008-4072	B 4*8mm TP4	Hinge to Housing	4
4	107-010-3073	B 3*10mm TP4	Housing to Bezel*6, Housing to Panel Bracket*2, Panel Bracket (L) to Panel*2, Panel Bracket (R) to Panel*2	12
5	108-S14-4032	Screw B/SW 4*14mm ISO	Hinge to Stand	1
6	109-948-0860	Screw	For D-Sub connector	2
7	121-001-HD772	Support Stand		1
8	121-750-HD772	Stand		1
9	121-002-HD772	Support Base		1
10	121-751-HD772	Base		1
11	121-500-HD972	Bracket R SECC 1.0t		1
12	121-501-HD972	Bracket L 1.0t		1
13	121-502-HD972-A	Panel Bracket		1
14	121-52B-HD972	Bracket B		1
15	123-500-HD972	Bracket Shield Cover SPTE 0.3mm		1
16	126-001-HD772	Hinge		1
17	132-300-PS576	Base Screw Ass'y		1
18	106-012-6033	Screw M6 L 12mm	Fixed Base & Neck	1
19	132-001-PS576-A	Springe		1
20	151-A01-I92S4	Front Bezel	Proview	1
21	154-002-HD772	Housing Cover	ABS	1

22	154-502-HD872	IR Lens	Pantone 195U	1
23	154-500-HD972	Power Knob	EM-00SL	1
24	154-501-HD972	Power Lens		1
25	154-502-HD972	OSD Knob	EM-00SL	1
26	154-503-HD972	OSD Knob Cover	EM-00CB	1
27	155-110-0003	Rubber 10 Ø *3	For Support Base	4
28	610-151-15GM-4	Signal Cable		1
29	631-006-7014-T	Wire 100mm 2.0 24AWG	For Inverter	1
30	631-008-G0509	J1		1
31	824-002-772VL-A	Speaker 8Ω 2W	Left side	1
32	824-002-772VR-A	Speaker 8Ω 2W	Right side	1
33	831-B13-0303	L20*W13*H17mm	For Panel and Main Cover upper side	1
34	126-500-2004	AL Foil L200*W40mm	For Panel	4
35	126-030-ALP4	AL Foil 200*30mm	Main Cover and Panel Inverter	2
36	126-001-7540	AL Foil 75*40mm	For Speaker	2
37	126-030-ALP	AL Foil 150*30mm	Bottom Bracket and Panel	1
38	126-A50-0972	AL Foil 320*50mm	Main Cover and Panel Inverter	1
39	631-001-4025A	Wire 1007#22 Black 250mm	Rear Cover to Main Cover Ground	1
40	101-008-3012	SCrew R3*8mm TP1	OSD Knob Cover to Bezel	2
41	104-008-3012	Screw R/W 3*8MM tp1	For Control PCB	2
42	154-509-HD772	Mylar Plate 85*58mm		1
43	123-501-HD972	Bracket shield Cover 0.3t		1
44	631-A30-S972	LVDS Wire 150mm		1
45	650-003-0081	Cable Tie		1

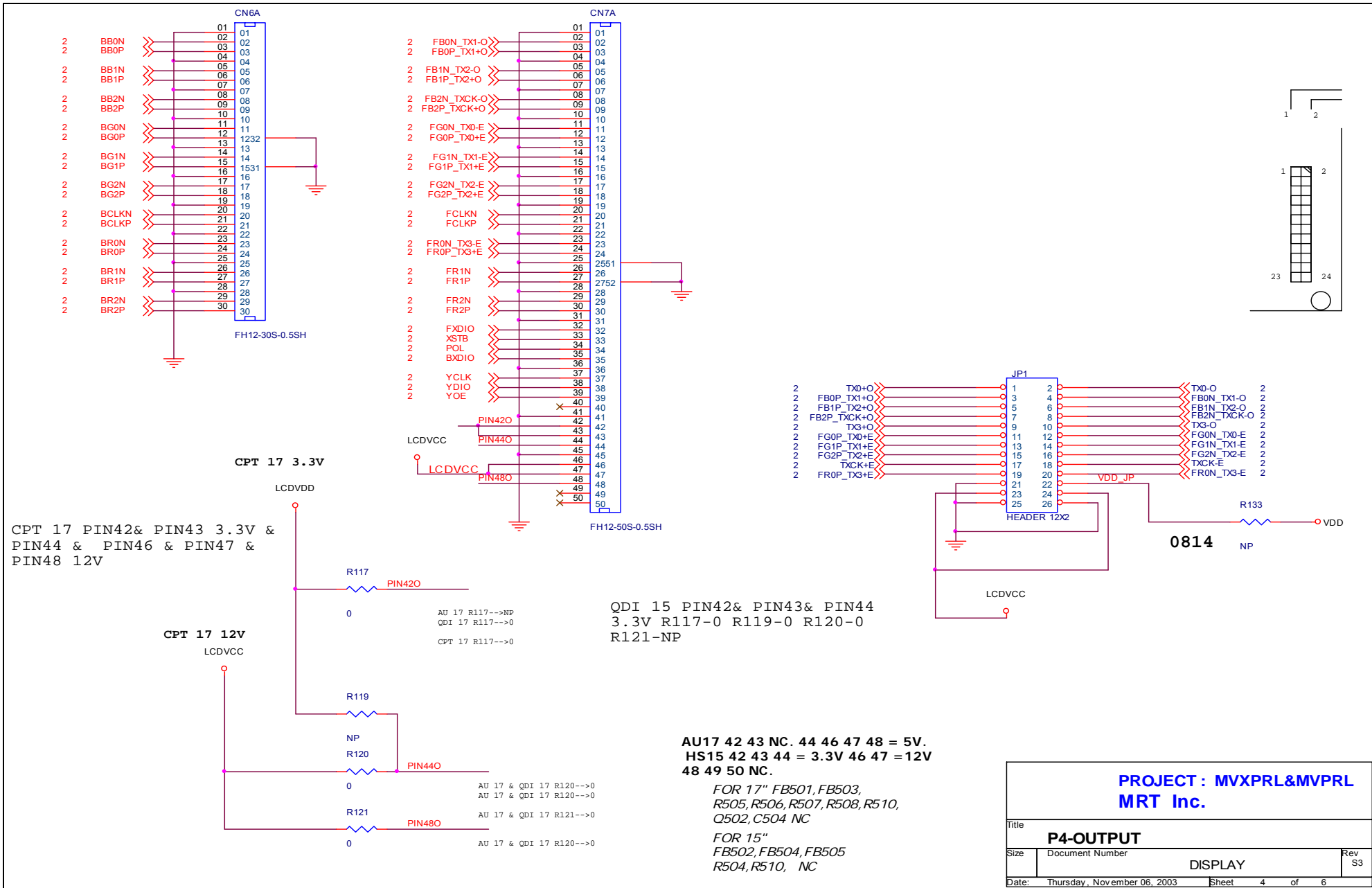
K. BLOCK DIAGRAM

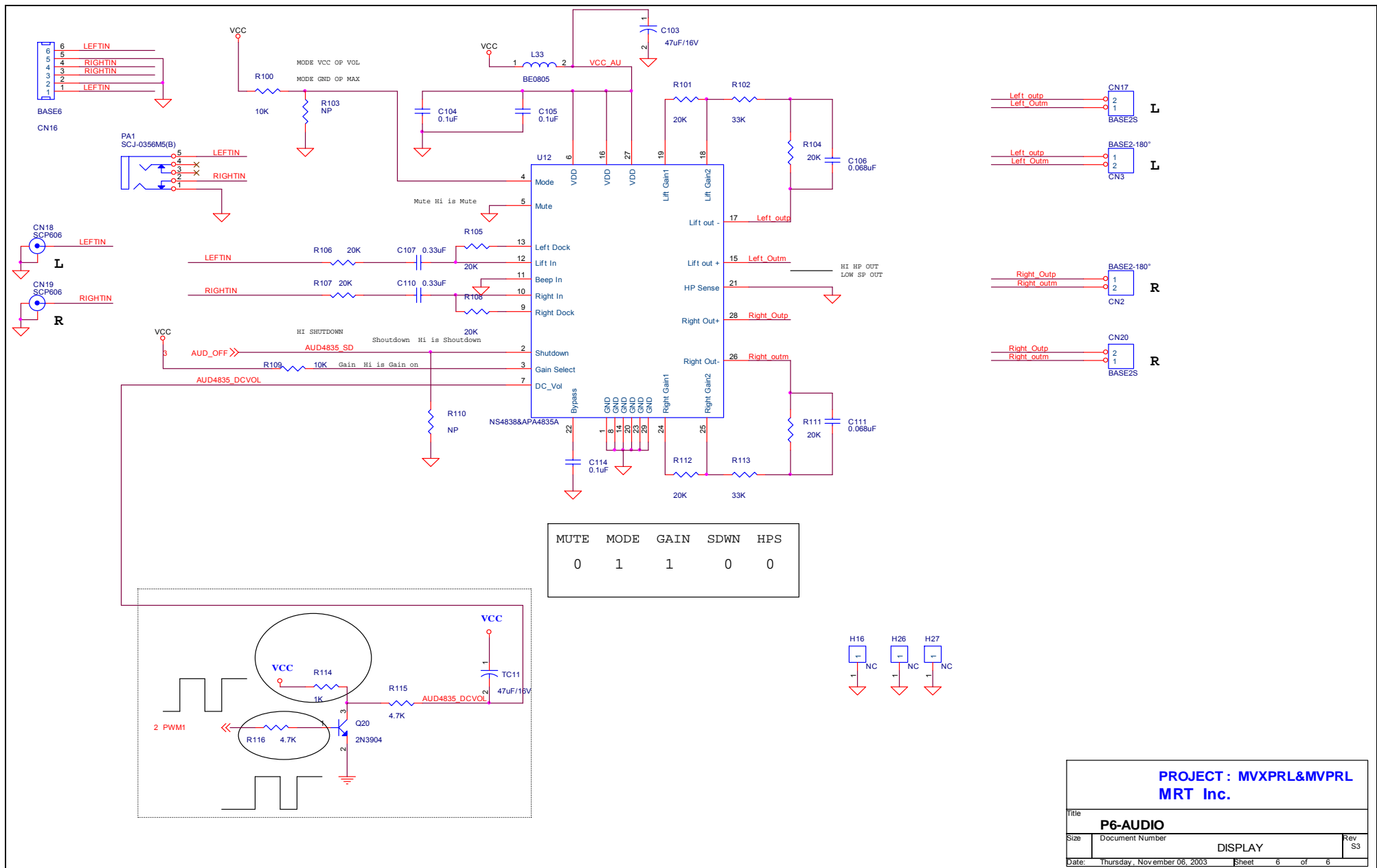


L. SCHEMATIC DIAGRAM



PROJECT: MVXPRL&MVPRL MRT Inc.			
File	P1-VGA INPUT		
Doc	Document Number	Rev	53
Date	Thursday, November 06, 2003	Sheet	1 of 5





Memo