

AY-565

Service Manual

Proview Electronics Co.,Ltd.

*6F, No.1, Pau-Sheng Road., Yung-Ho City,
Taipei 234 , Taiwan , R.O.C.*

Tel : (886-2) 2231-6789 , Fax :(886-2)2231-5678

TABLE OF CONTENTS

SERVICE WARNING

A. IMPORTANT SAFETY INSTRUCTION

B. SPECIFICATIONS

C. TIMING CHART

D. CONTROL LOCATION

E. BLOCK DIAGRAM

F. CONDUCTION VIEW

G. SCHEMATIC DIAGRAM

H. TROUBLE SHOOTING HINTS

I. REPLACEMENT PARTS LIST

WARNING

To prevent from fire or shock hazard,do not expose monitor to any rain or any form of water.High voltage is inside the monitor so please do not remove the back cover of the cabinet if you are not a qualified monitor engineer.

Contact the local dealer or the nearest **PROVIEW** branch office if you need help.

A. IMPORTANT SAFETY INSTRUCTION

Prior to using this service manual,please ensure that you have carefully followed all the procedures outlined in the user's manual for this product.

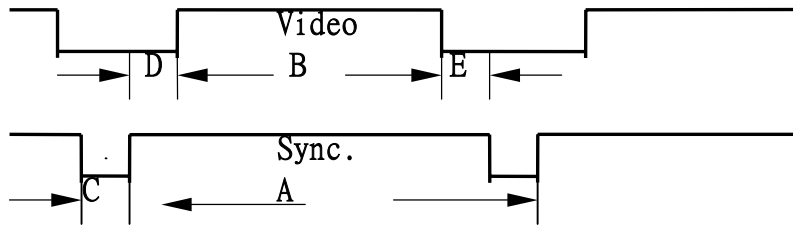
1. Read all of these instructions.
2. Save these instructions.
3. Follow all warnings and instructions a marked on the product.
4. Unplug this product from the wall outlet before cleaning.Do not use liquid cleaners or aerosol cleaners, use a damp cloth for cleaning.
5. Do not use this product near water.
6. Do not place this product on an unstable cart,stand or tablle.The product may fall,causing serious damage to the product.
7. Slots and openings in the cabinet and the back or bottom are provided for ventilation,to ensure reliable operation of the product and to protect it from overheating,those openings must not be blocked or covered.The openings should never be blocked by placing the product on a bed,sofa, rug, or other similar surface.This product should not be placed in a built-in installation less proper ventilation is provided.
8. This products should be operated from the type of power source indicated on the marketin label. If you are not sure of the type of power available, consult your dealer or local power company
9. This product is equipped with a 3-wire grounding type plug,a plug having a third (grounding) pin.This plug will only fit into a grounding-type power outlet.This is a safety feature,if you are unable to insert the plug into the outlet,contact your electrician to replace your obsolete outlet.Do not defeat the purpose of the grounding-type plug.
10. Do not allow anything to rest on the power cord.Do not locate this product where persons will walk on the cord.
11. If an extension cord is used with this product,make sure that the total of the ampere ratings on the product plugged into the extension cord to the waplugged into outlet does not exceed 15 ampere.
12. Never push objects of any kind into this product through cabinet slots as they may touch dangerous voltage points or short out parts that could result in a risk of fire or electric shock.Never spill liquid of any kind on the product.
13. Do not attempt to service this product yourself,as opening or removing covers may expose you to dangerous voltage points or other risks.Refer all servicing to service personnel.
14. Unplug this product from the wall outlet and refer servicing to qualified service personnel under the following conditions.
 - a. When the power cord or plug is damaged or frayed.
 - b. If liquid has been spilled into the product.
 - c. If the product has been exposed to rain or water.
 - d. If the product does not operate normally,when the operating instructions are followed.Adjust only those controls that are covered by the operating instructions since improper adjustment of other controls may result in damage and will often require extension work by a qualified technician to restore the product to normal operation.
 - e. If the product has been dropped or the cabinet has been damaged.
 - f. If the product exhibits a distinct change in performance,indicating a need for service.

B. SPECIFICATIONS

- | | |
|-------------------------------------|--|
| 1. Support display colors | 16.7M color |
| 2. Active Display Area | 304.1mm (H) x 228.01mm (V) |
| 3. Pixel Pitch | 0.297(H) x 0.297(V) mm |
| 4. Synchronization Range | |
| A. Horizontal | 30 – 60 KHz |
| B. Vertical | 60 – 75 Hz |
| 5. Power Source | 100 – 240 Vac / 50 – 60 Hz |
| 6. Power Consumption | 40W (max.) |
| 7. Input Signal | |
| A. Video | Analog R.G.B. , 0.7Vp-p / 75 Ohms |
| B. Sync. | TTL level, positive or negative polarity |
| 8. Connection Type | 15 Pin D Type |
| 9. Resolution | 1024 x 768 pixels |
| 10. Color Temperature | 9300°K / 6550°K |
| 11. Dimension (WxHxD) | 404mm x 348.5mm x 138mm |
| 12. Monitor Weight | 5.2Kg |
| 13. Base Operation | |
| Tilt | 0 / + 30 degree |
| 14. Power Saving | |
| A. ON | < 40W |
| B. STAND BY | < 5W |
| C. OFF | < 5W |
| 15. Signal Connector Pin Assignment | |
| A. Pin No. | |
| | 1. Red |
| | 2. Green |
| | 3. Blue |
| | 4. Ground |
| | 5. Self Test |
| | 6. Red Ground |
| | 7. Green Ground |
| | 8. Blue Ground |
| | 9. Not Connected |
| | 10. Sync. Ground |
| | 11. Ground |
| | 12. SDA |
| | 13. Horizontal Sync. |
| | 14. Vertical Sync. |
| | 15. SCL |
| 16. Audio signal | |
| A. 3.5Φ stereo phone jack | |
| B. Rin, Lin :1Vrms (max) | |
| C. 1+1 W Power amplifier | |

C. TIMING CHART

The video signal timing is as following :



A: Period
B: Active
C: Sync Width
D: Back Porch
E: Front porch

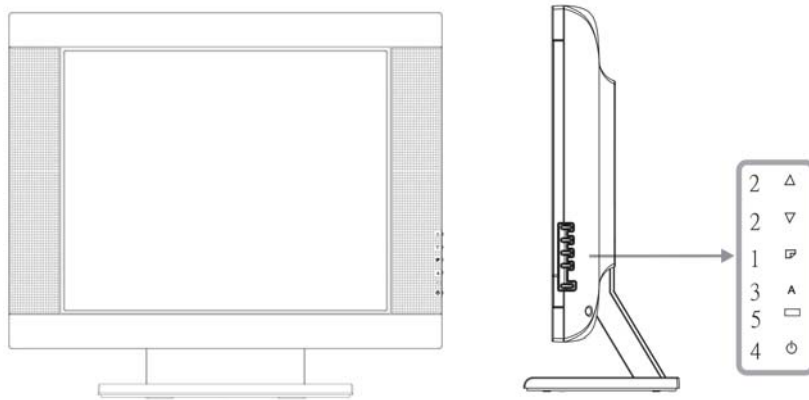
Preset Modes	VGA 640X350	VGA 640X400	VGA 640X480	VGA 640X480	VESA 640X480	VESA 640X480	VGA 720X350	VGA 720X400	VESA 800X600	VESA 800X600	VESA 800X600
Dot Rate	25.175 MHz	25.175MHz	25.175MHz	31.340MHz	31.500MHz	31.500MHz	28.322MHz	28.322MHz	36.000MHz	40.000MHz	50.000MHz
F.H	31.469 KHz	31.469KHz	31.469KHz	34.978KHz	37.861KHz	37.500KHz	31.469KHz	31.469KHz	35.156KHz	37.879KHz	48.077KHz
A-period	31.778 us	31.778us	31.778us	28.590us	26.413us	26.667us	31.777us	31.777us	28.444us	26.400us	20.800us
B-Active	25.422 us	25.422us	25.422us	20.421us	20.317us	20.317us	25.422us	25.422us	22.222us	20.000us	16.000us
C-Syn	3.813us	3.813us	3.813us	2.042us	1.270us	2.032us	3.813us	3.813us	2.000us	3.200us	2.400us
D-Back Porch	1.907us	1.907us	1.589us	3.063us	3.810us	3.810us	1.907us	1.907us	3.556us	2.200us	1.280us
E-Front Porch	0.636us	0.636us	0.954us	3.064us	1.016us	0.508us	0.635us	0.635us	0.666us	1us	1.12us
F . V	70.087 Hz	70.087Hz	59.941Hz	66.625Hz	72.810Hz	75.000Hz	70.087Hz	70.087Hz	56.250Hz	60.317Hz	72.188Hz
A-Period	14.268 ms	14.268ms	16.683ms	15.009ms	13.734ms	13.333ms	14.268ms	14.268ms	17.778ms	16.579ms	13.853ms
B-Active	11.122 ms	12.711ms	15.253ms	13.723ms	12.678ms	12.800ms	11.122ms	12.711ms	17.067ms	15.840ms	12.480ms
C-Syn	0.064ms	0.064ms	0.064ms	0.086ms	0.079ms	0.080ms	0.064ms	0.064ms	0.057ms	0.106ms	0.125ms
D-Back Porch	1.907ms	1.112ms	0.794ms	1.115ms	0.528ms	0.427ms	1.907ms	1.112ms	0.626ms	0.607ms	0.478ms
E-Front Porch	1.175ms	0.381ms	0.572ms	0.085ms	0.449ms	0.026ms	1.175ms	0.381ms	0.028ms	0.026ms	0.77ms
H/V SYNC	+ -	- +	- -	- -	- -	- -	+ -	- +	+ +	+ +	+ +
Interlaced	NON	NON	NON	NON	NON	NON	NON	NON	NON	NON	NON

Preset Modes	VESA 800X600	MAC 832X624	VESA 1024X768	VESA 1024X768	VESA 1024X768						
Dot Rate	49.500MHz	55.000MHz	65.000MHz	75.000MHz	78.750MHz						
F.H	46.875KHz	49.107KHz	48.363KHz	56.476KHz	60.023KHz						
A-period	21.333us	20.364us	20.677us	17.707us	16.660us						
B-Active	16.162us	15.127us	15.754us	13.653us	13.003us						
C-Syn	1.616us	2.182us	2.092us	1.813us	1.219us						
D-Back Porch	3.232us	1.745us	2.462us	1.920us	2.235us						
E-Front Porch	0.323us	1.31us	0.369us	0.321us	0.203us						
F . V	75.000Hz	75.087Hz	60.004Hz	70.069Hz	75.029Hz						
A-Period	13.333ms	13.318ms	16.666ms	14.272ms	13.328ms						
B-Active	12.800ms	12.707ms	15.880ms	13.599ms	12.795ms						
C-Syn	0.064ms	0.061ms	0.124ms	0.106ms	0.050ms						
D-Back Porch	0.448ms	0.428ms	0.600ms	0.513ms	0.466ms						
E-Front Porch	0.021ms	0.122ms	0.062ms	0.054ms	0.017ms						
H/V SYNC	+ +	- -	- -	- -	+ +						
Interlaced	NON	NON	NON	NON	NON						

D. CONTROL LOCATION

Font control panel

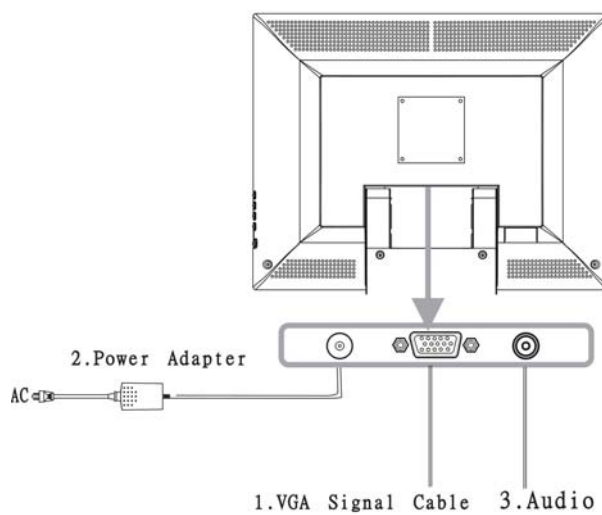
3.1 Front Panel over view



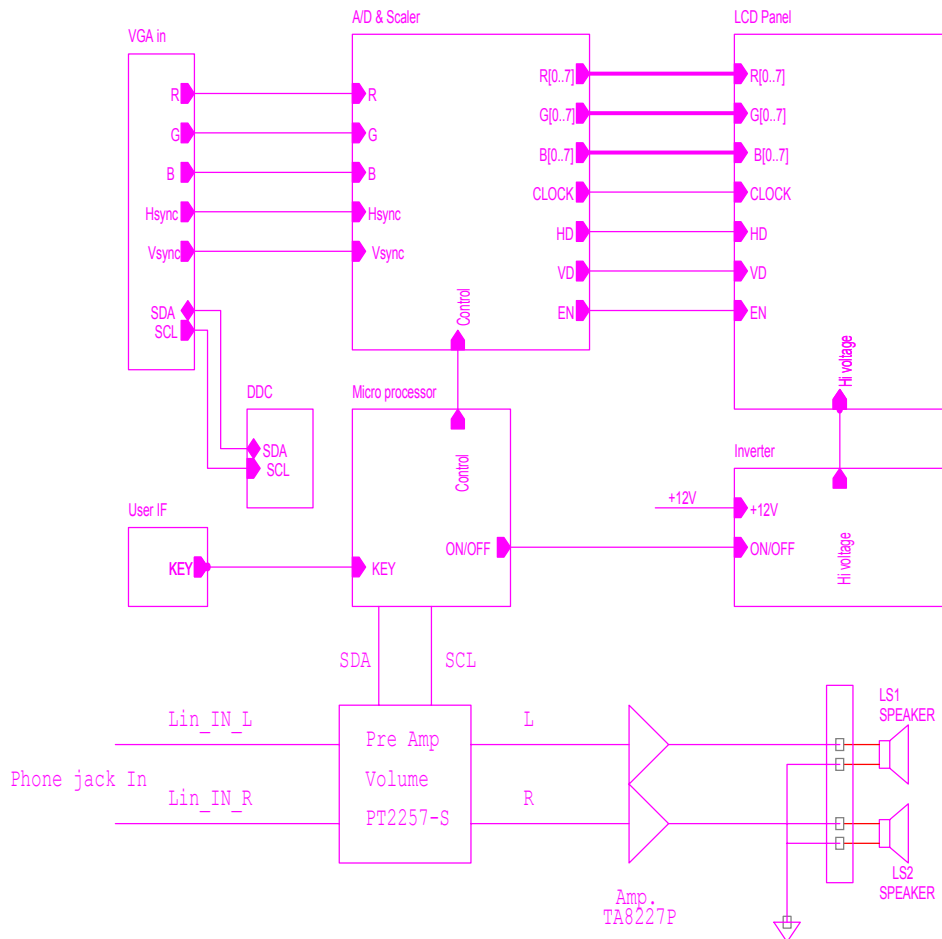
1. Menu Button
2. Select Button
3. Auto Button
4. Power Button
5. Power indicator

Rear panel

3.2 Rear panel over view



E. BLOCK DIAGRAM



Block Diagram

Proview Electronics (Taiwan) Co., LTD.

6F, NO.1, Pau-Sheng Rd., Yung-Ho City,
Taipei County, Taiwan R.O.C.

Tel: 886-2-2231-6789 Fax: 886-2-2232-4613

Title

Block Diagram

Size
A

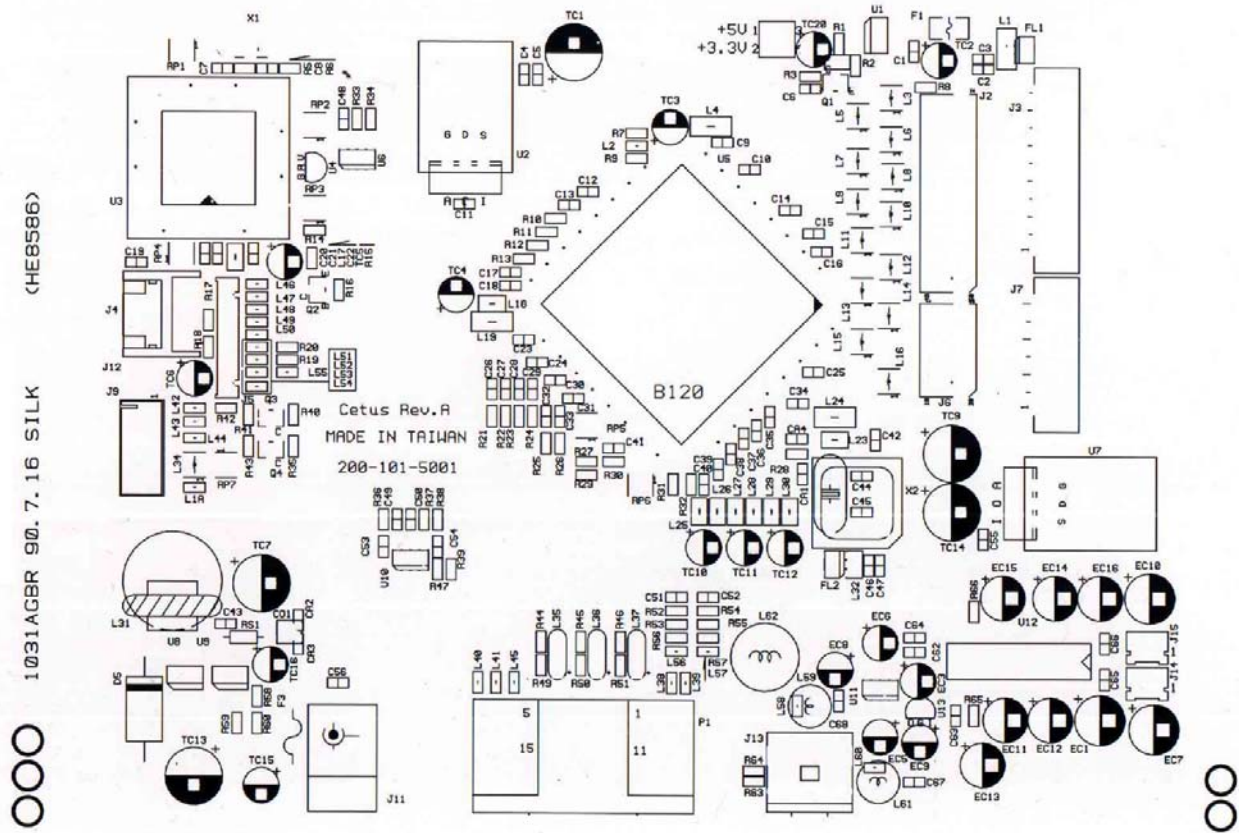
Document Number
Cetus (01031),200-101-5001

Rev
2.B

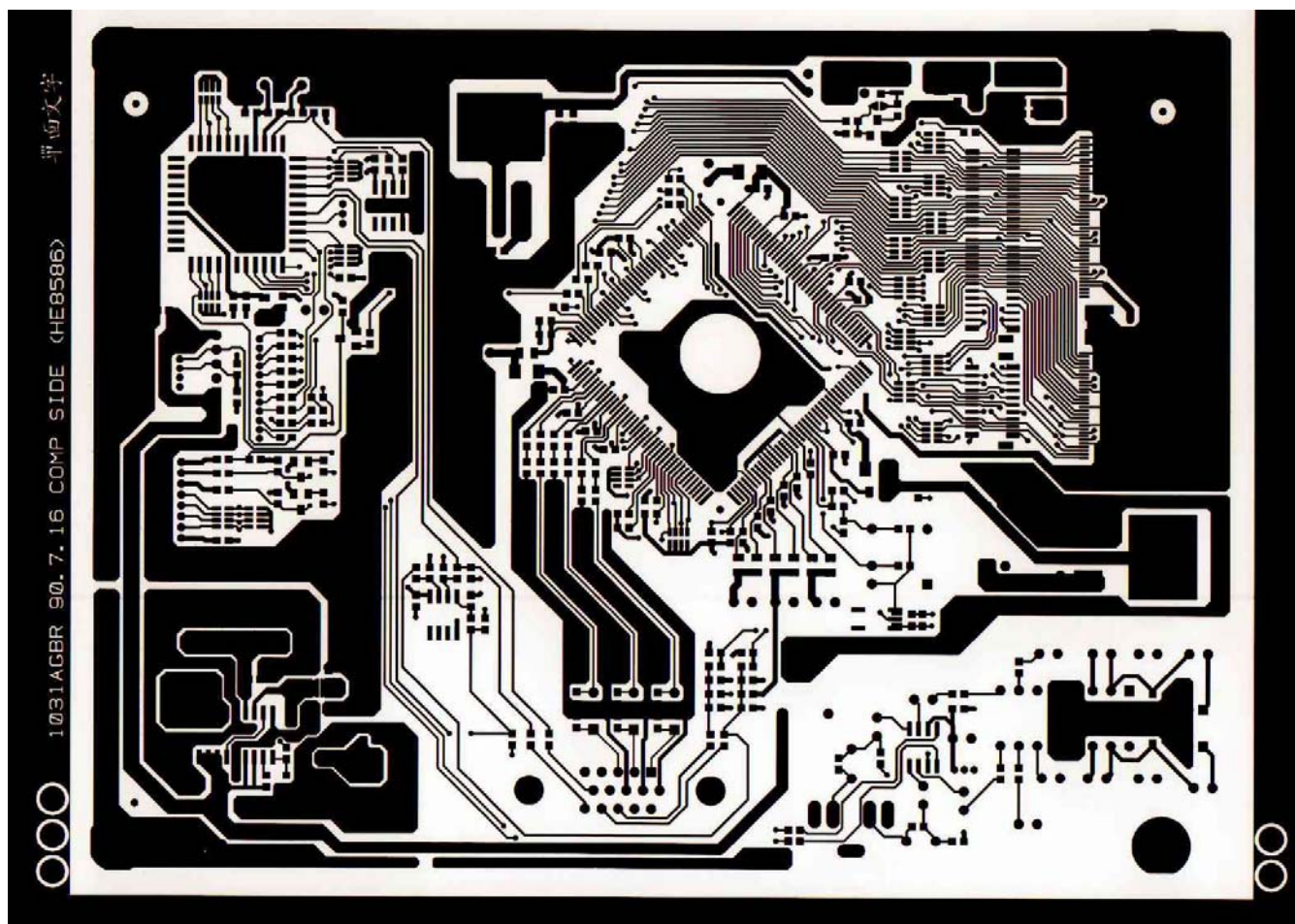
Date: Wednesday, November 21, 2001 Sheet 1 of 9

F. CONDUCTION VIEW

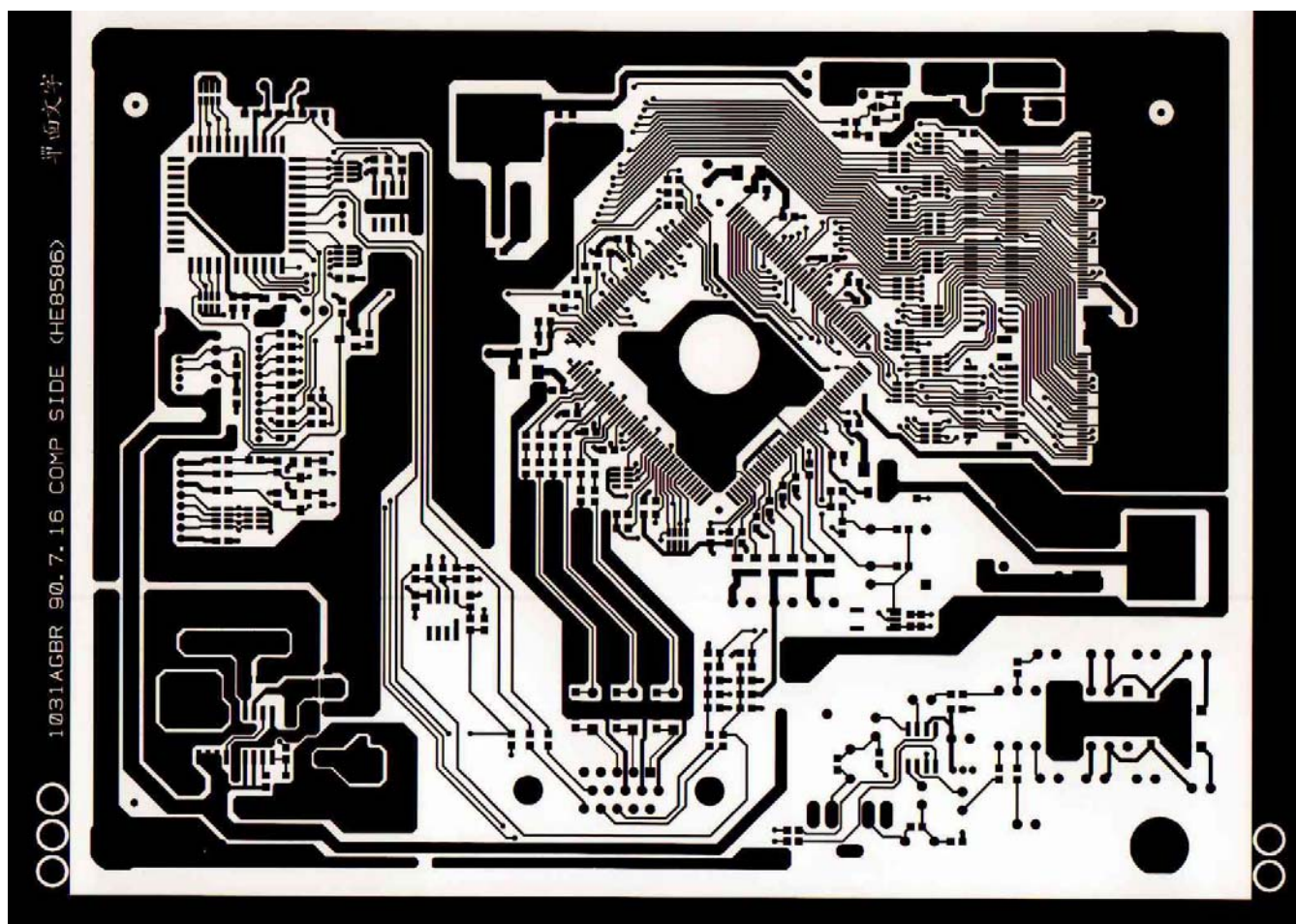
MAIN BOARD (Silk)



MAIN BOARD (Component Side)

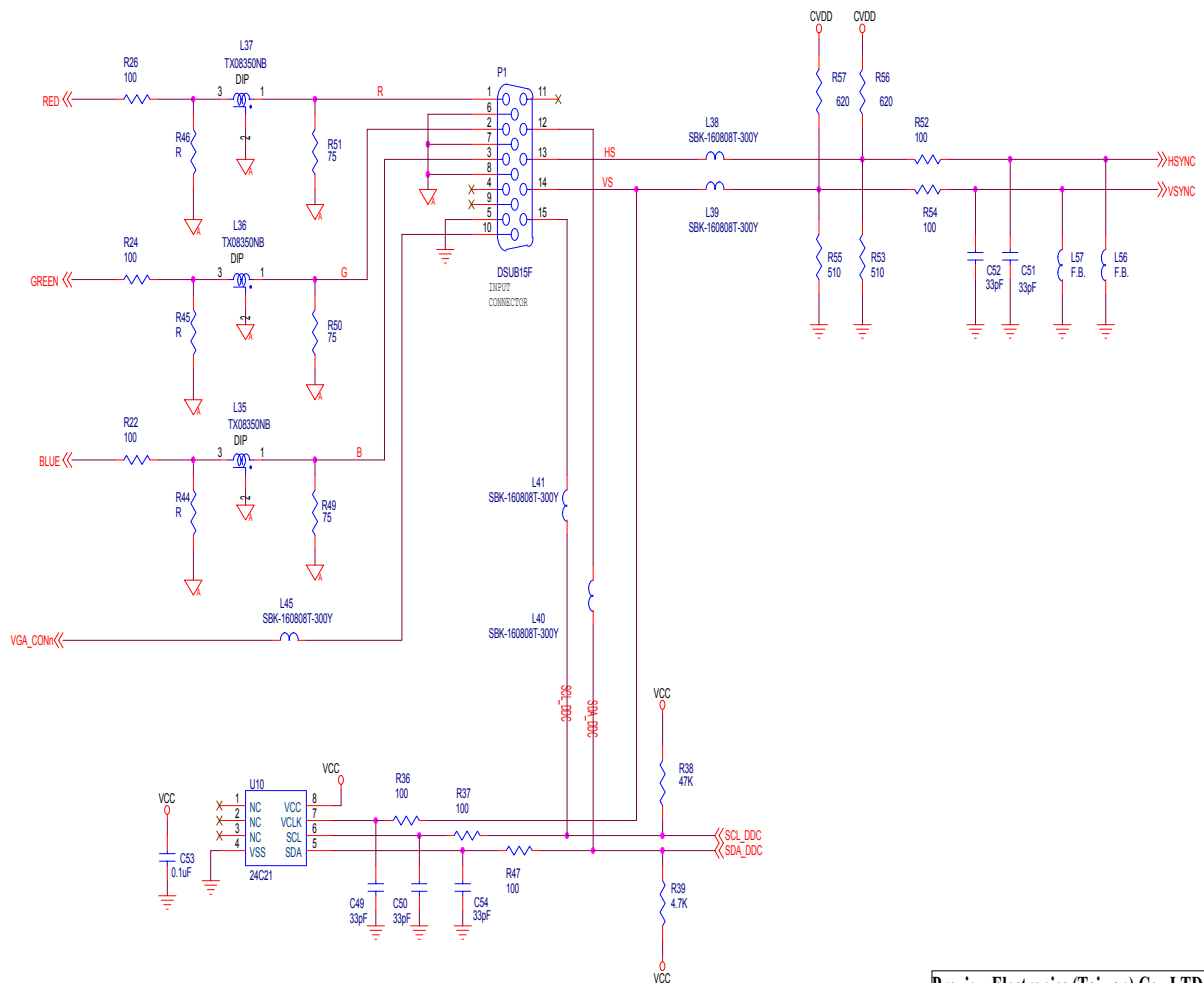


MAIN BOARD (Soild Side)



G. SCHEMATIC DIAGRAM

Main Board

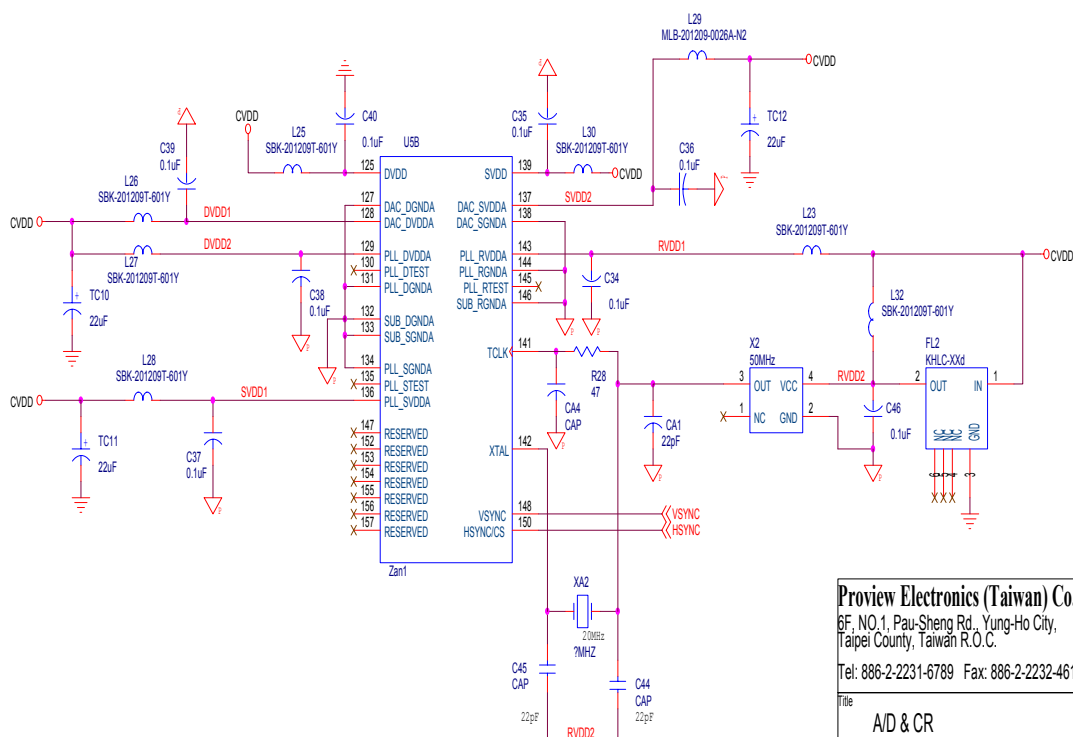
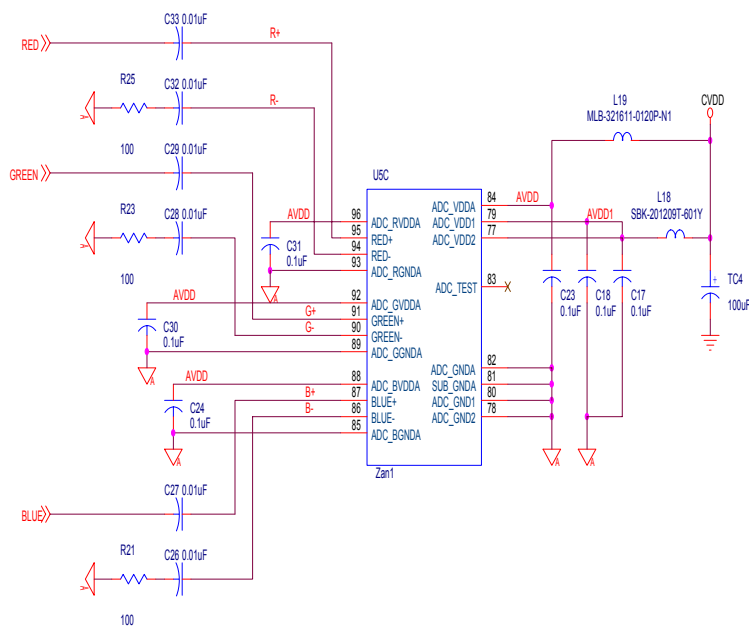


Proview Electronics (Taiwan) Co., LTD.

6F, NO.1, Pau-Sheng Rd., Yung-Ho City,
Taipei County, Taiwan R.O.C.

Tel: 886-2-2231-6789 Fax: 886-2-2232-4613

Title		
RGB IN		
Size	Document Number	Rev
Custom	Cetus (01031C) 200-101-5001-C	3.C
Date:	Wednesday, November 21, 2001	Sheet 1 of 9



Proview Electronics (Taiwan) Co., LTD.

6F, NO.1, Pau-Sheng Rd., Yung-Ho City,
Taipei County, Taiwan R.O.C.

Tel: 886-2-2231-6789 Fax: 886-2-2232-4613

Title

A/D & CR

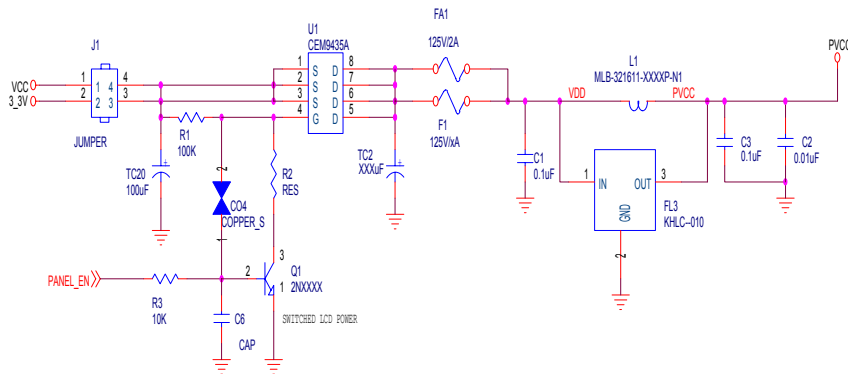
Size Document Number

Custom Celus (01031C),200-101-5001-C

Rev

3.C

Date: Wednesday, November 21, 2001 Sheet 2 of 9



Samsung : LM1500S-P01 3.3V/600mA/2.5A
 : LM1500S-P02 3.3V/600mA/2.5A
 : LM1500S-P03 3.3V/600mA/2.5A

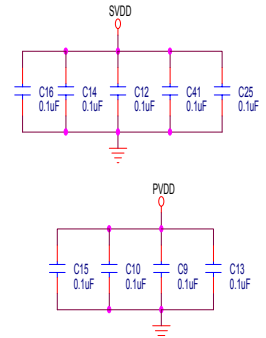
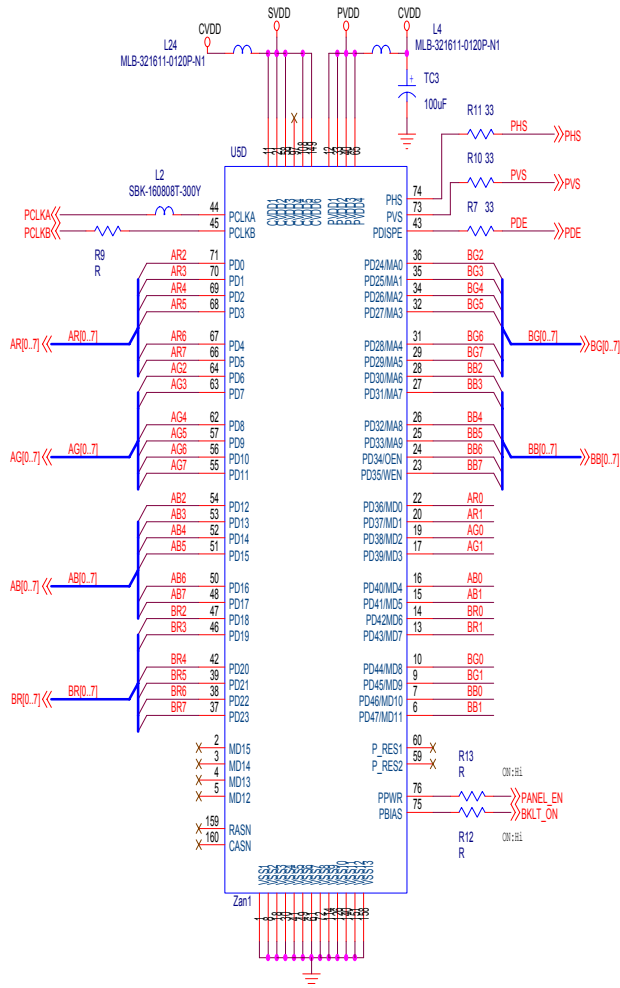
COP : CLAA1500A03 5V/600mA/2A

Hyundai : HT15K11-100 5V/780mA/2A

LG : LM151X2-C2TH 3.3V/800mA/1.5A
 For LG LM151X2 using even bytes

Sharp : LD-11904-6 5V/530mA/2A

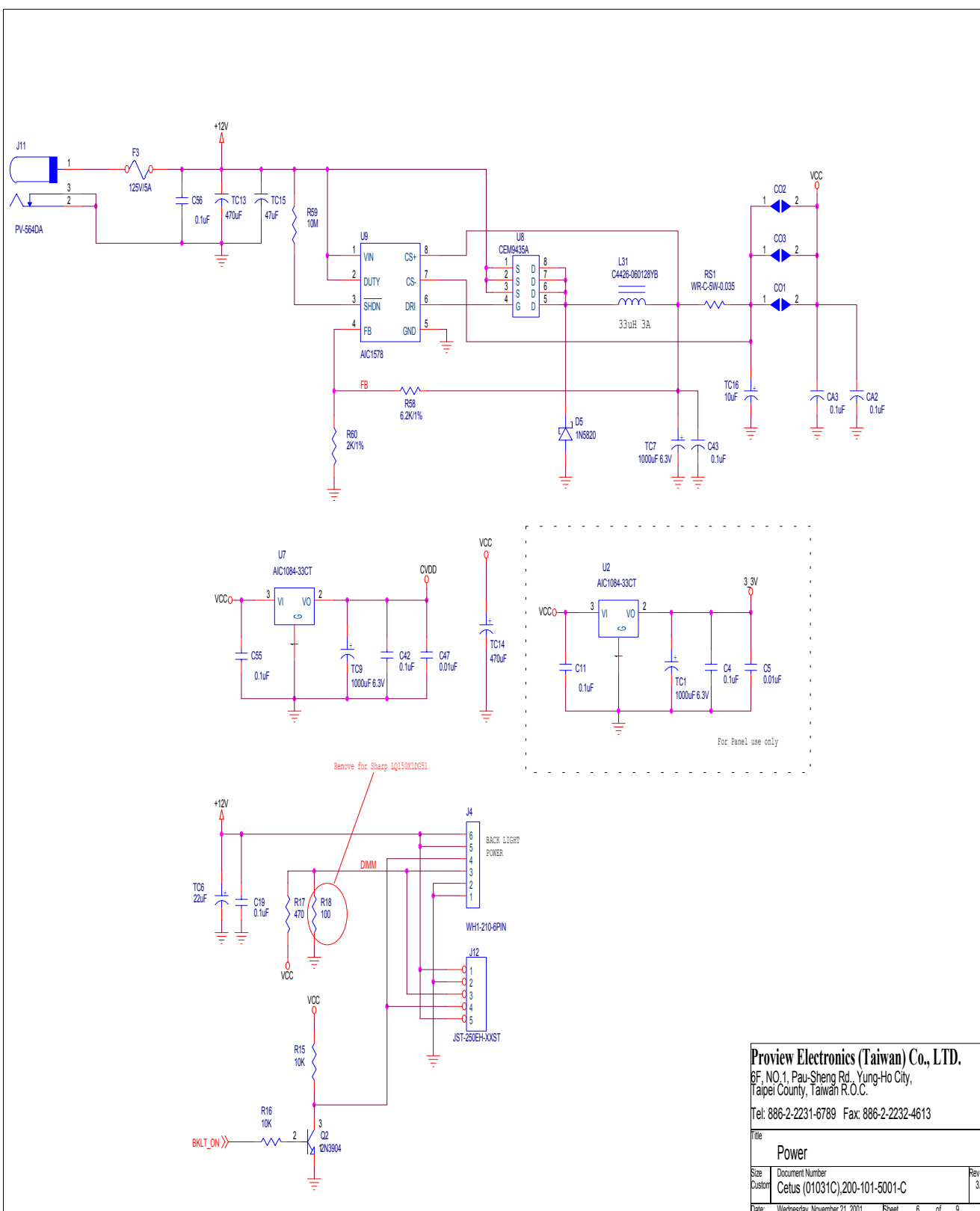
AOT : L1500M2-2 3.3V/700mA/2A

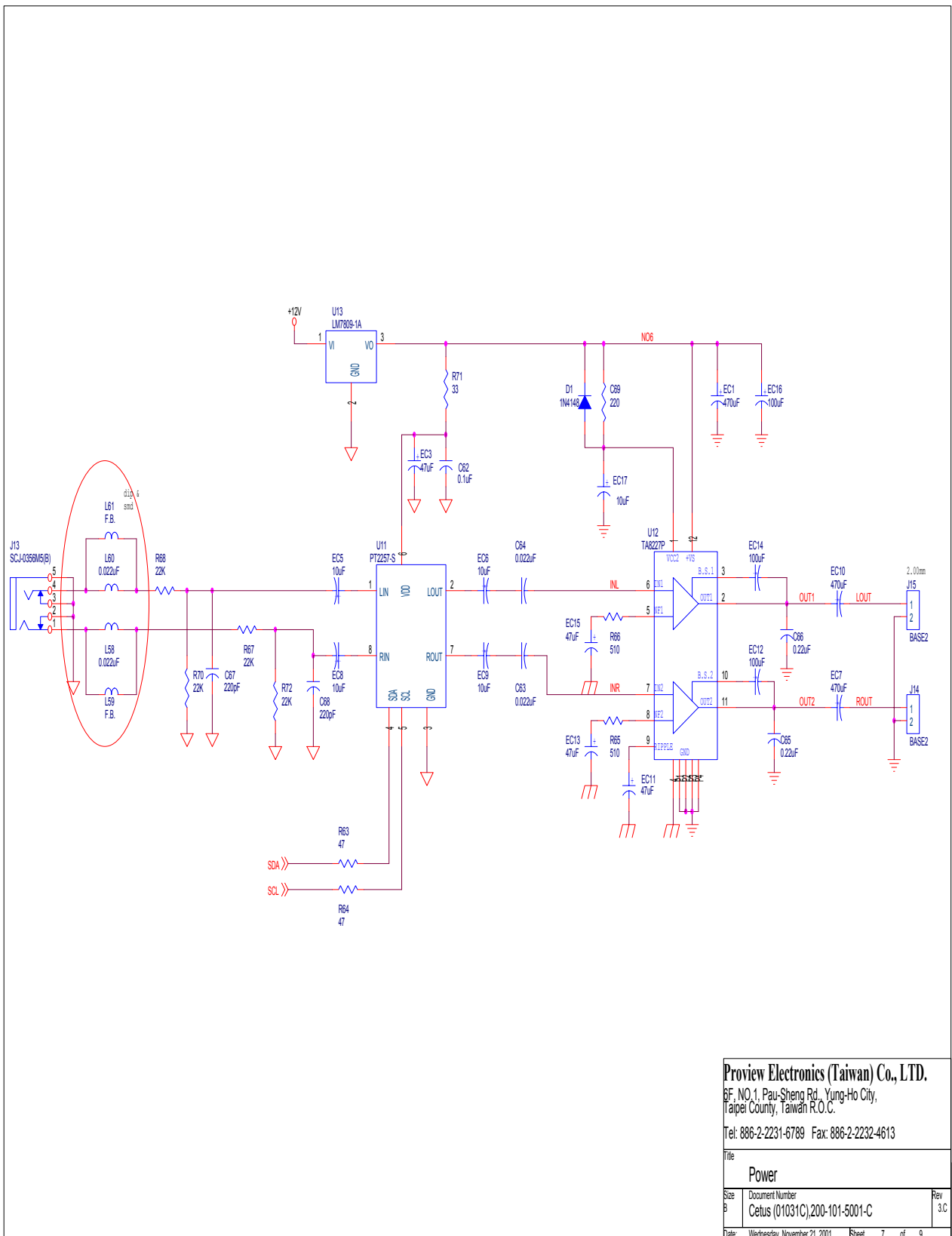


Proview Electronics (Taiwan) Co., LTD.
 6F, NO.1, Pau-Sheng Rd., Yung-Ho City,
 Taipei County, Taiwan R.O.C.

Tel: 886-2-2231-6789 Fax: 886-2-2232-4613

Title		
OIF		
Size	Document Number	Rev
B	Cetus (01031C), 200-101-5001-C	3.C
Date	Friday, December 07, 2001	Sheet 3 of 9





Proview Electronics (Taiwan) Co., LTD.

6F, NO.1, Pau-Sheng Rd., Yung-Ho City,
Taipei County, Taiwan R.O.C.

Tel: 886-2-2231-6789 Fax: 886-2-2232-4613

Title

Power

Size

Document Number

Cetus (01031C)200-101-5001-C

Date

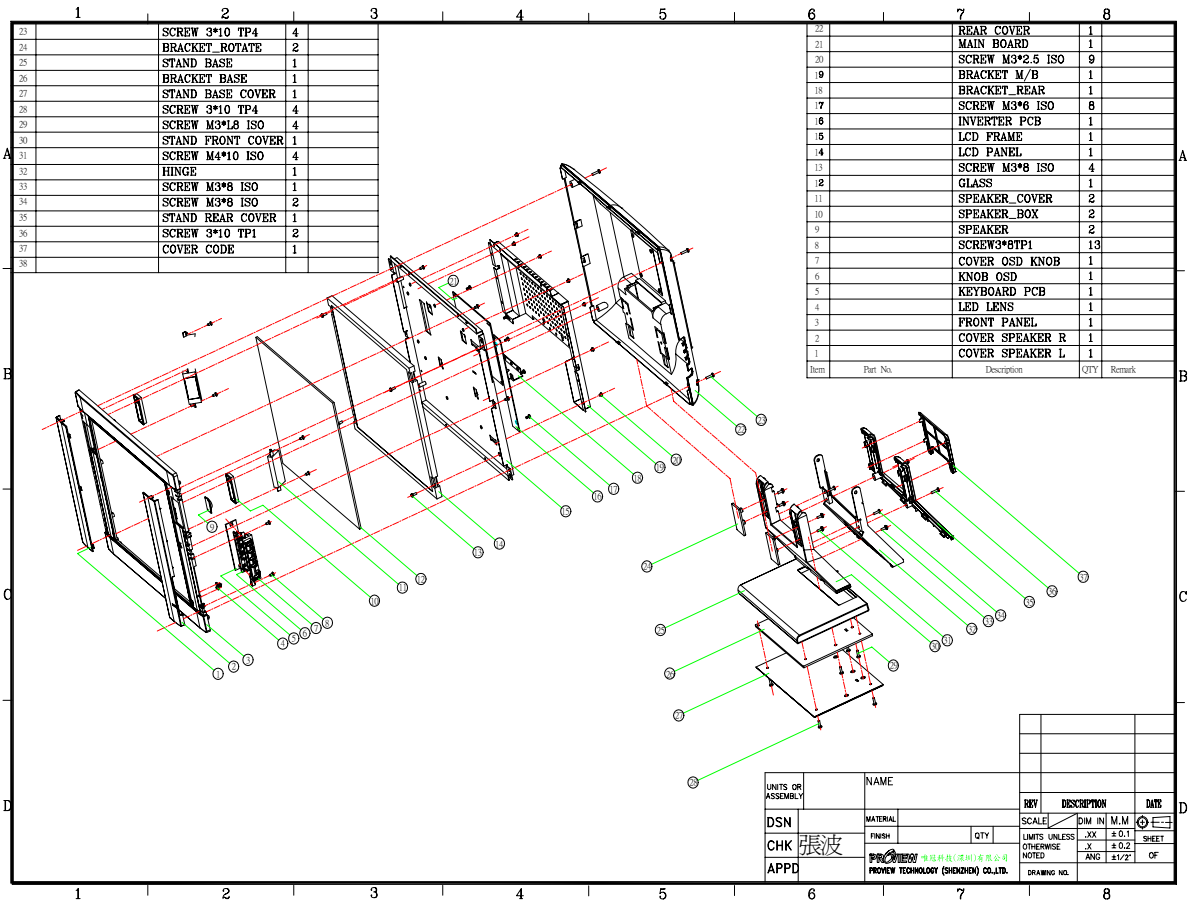
Wednesday, November 21, 2001

Sheet

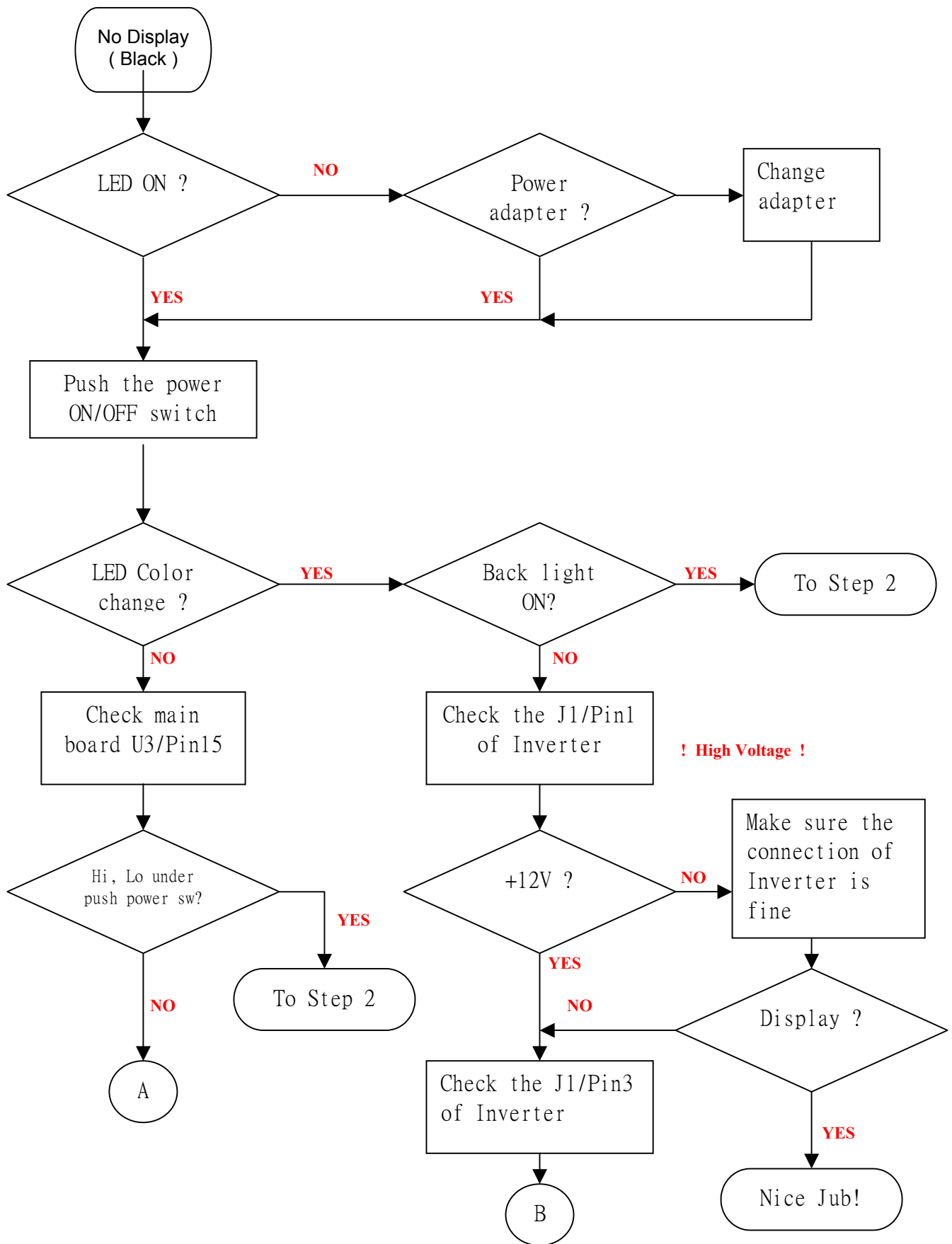
7 of 9

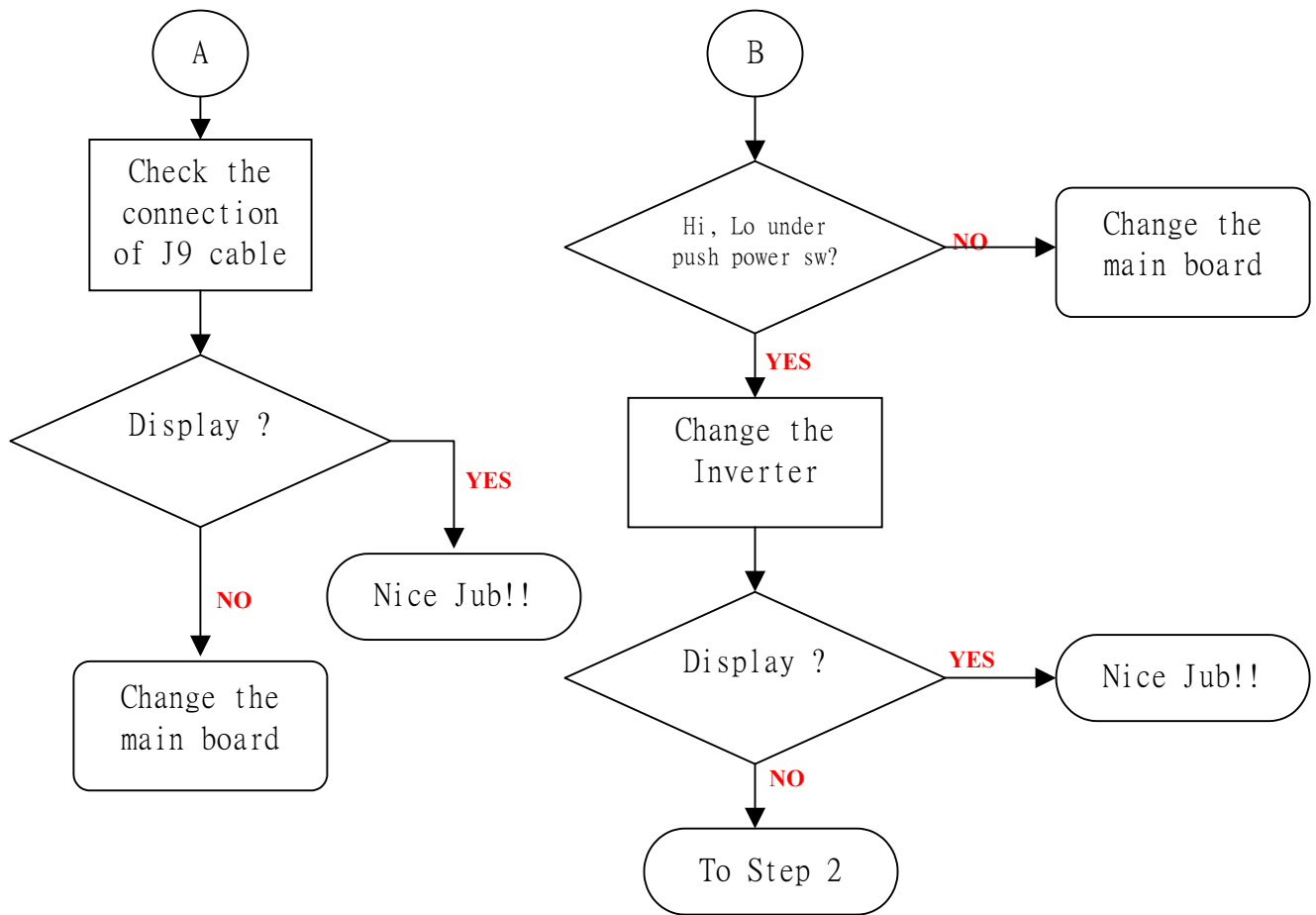
Rev

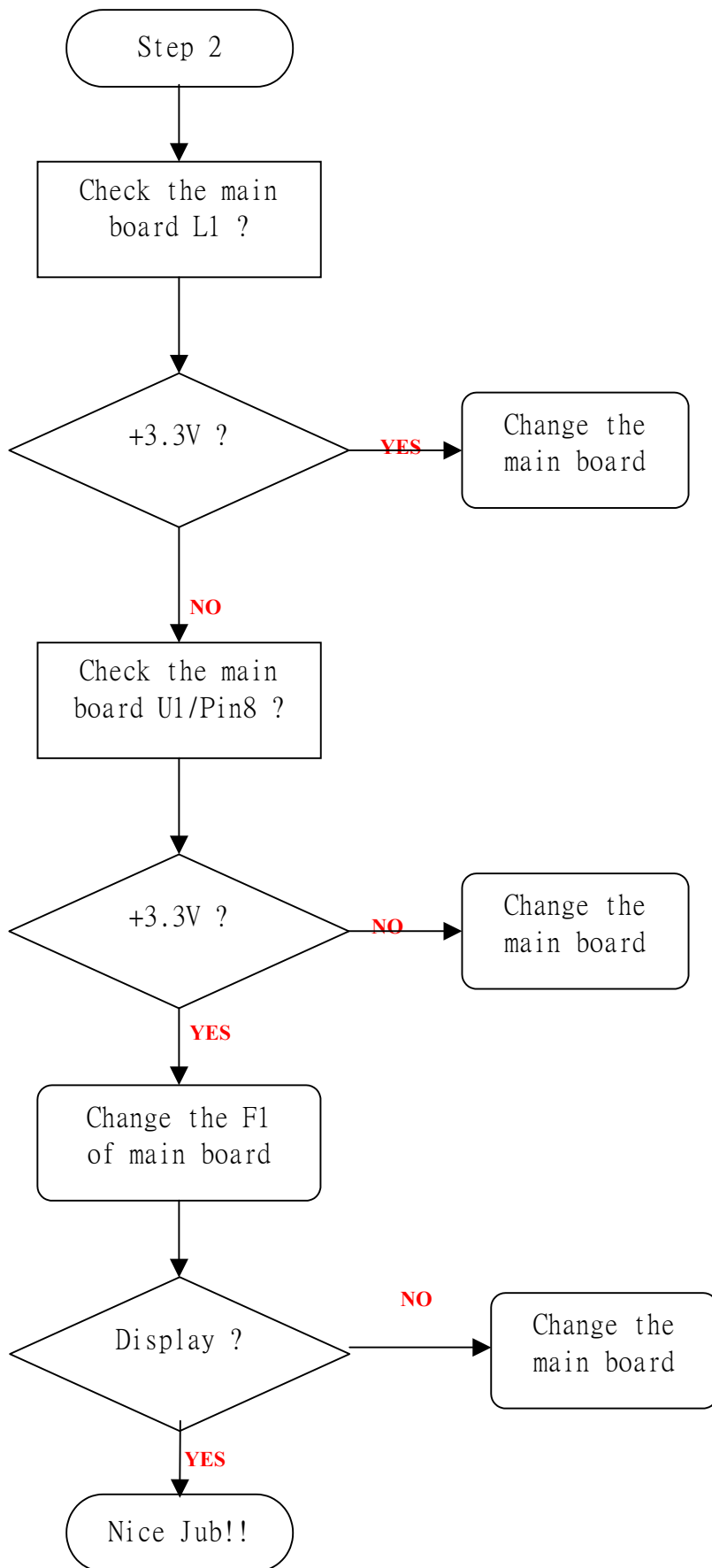
3.C

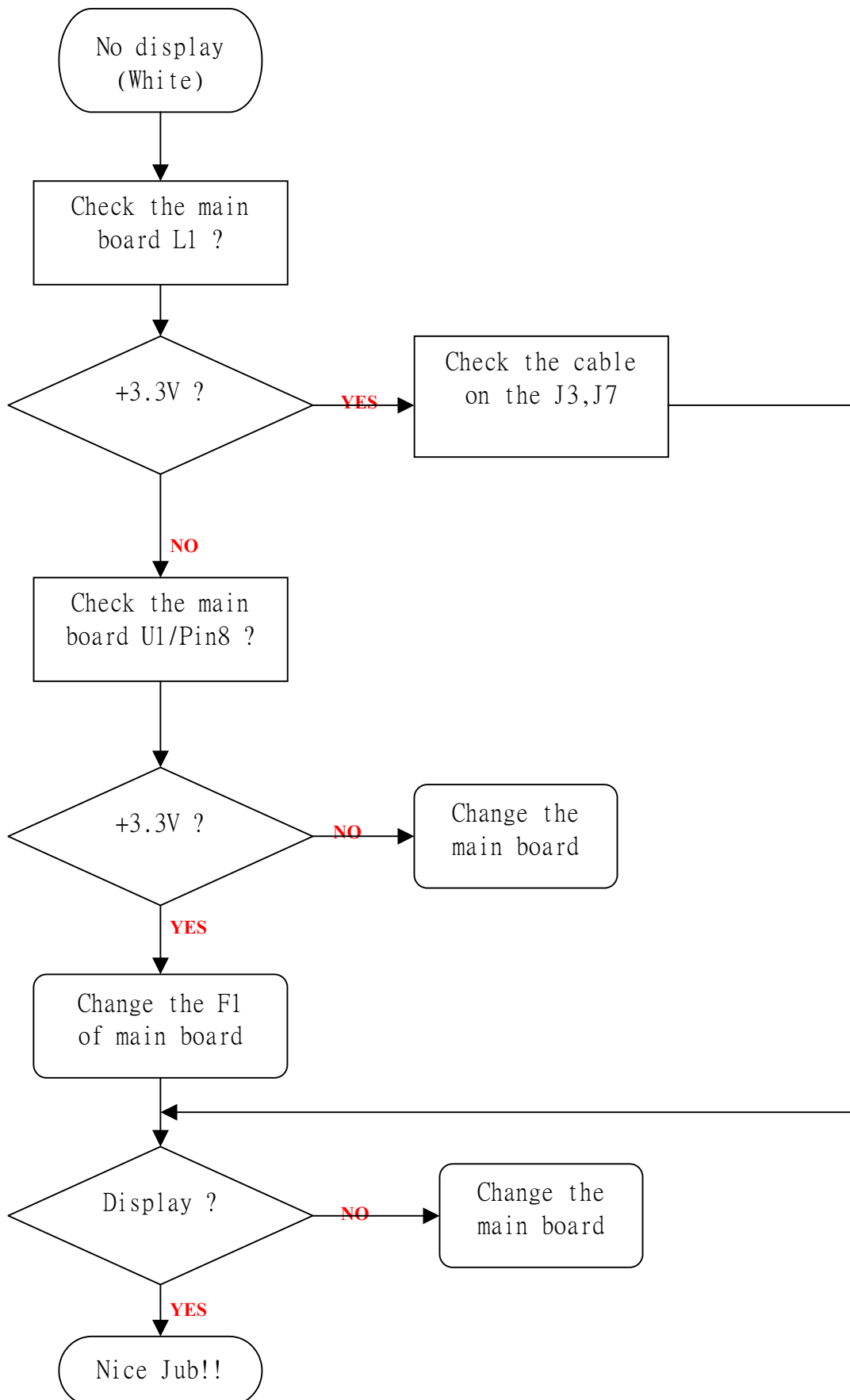


H. TROUBLE SHOOTING HINTS









I. REPLACEMENT PARTS LIST

Item	Part order Code	Description	QPA	UOM	Reference
1	988-1U0-0001	AY-565+TC099 ADT MAG	1	EA	
2	002-001-00CE-D	EUROPE CE DECLEARATION MAG *	1	EA	
3	002-001-0DOC-E	FCC DECLEARATION *	1	EA	
4	002-001-TC09	ALL SERIES TC099 *	1	EA	
5	002-002-848FA-D	EUROPE DOC MAG *	1	EA	
6	002-S01-0565	565 LEAFLET 2 PAGES *	1	EA	
7	002-U01-0565	565 USER MANUAL ENGLISH VERSION *	1	EA	
8	003-002-0848	CARTON LABEL 110*50m/m	1	EA	
9	003-101-TC09	ALL SERIES TC099 LBL *	1	EA	
10	005-002-0565	565 CTN FOR MAG *	1	EA	
11	005-002-LCDC	LCD13"15" ACCESSORY BOX 290x160x55mm	1	EA	
12	153-001-0565	565 BACK LBL NO BRAND *	1	EA	
13	160-001-AY565	POLYFOAN R *	1	EA	
14	160-002-AY565	POLYFOAN L *	1	EA	
15	170-001-LCD5	LCD15" PE BAG 550x800x0.06mm	1	EA	
16	170-002-LCDS	LCD13"15SPK PE BAG100x400x0.04	1	EA	
17	600-151-2804	AC POWER CORD VDE PLUG PC WHITE 1.5M	1	EA	
18	610-181-15GM-1	AY565 SIGNAL CABLE 15P->15P 180cm BLACK *	1	EA	
19	631-003-A011	3.5 \$ AUDIO CABLE 180cm BLACK*	1	EA	
20	846-120-DOAL-T	AC->DC 12V 48W TO PC LAE TCO*	1	EA	
21	154-001-MAGL	MAG LOGO PLASTIC MATERIAL *	1	EA	
22	003-401-0565	565 CTN LBL MAG 90*70mm *	1	EA	
23	999-VF2-AY565	AY-565 +TC099 ADT MAG	1	EA	
24	899-000-AY565-E	AY-565 MAIN BOARD ASS'Y	1	EA	
25	385-104-032584	SMD CC 0.1uF 25V Y5V 0603 *	41	EA	C1,CA2,CA3,C3,C4,C9,

					C10,C11,C12,C13,C14,
					C15,C16,C17,C18,C19,
					C20,C22,C23,C24,C25,
					C30,C31,C34,C35,C36,
					C37,C38,C39,C40,C41,
					C42,C43,C46,C48,C53,
					C55,C56,C63,C64,C62,
26	382-103-032564	SMD CC 0.01uF/25V X7R 0603 *	10	EA	C2,C5,C21,C26,C27,
					C28,C29,C32,C33,C47,
27	381-330-032554	SMD CC 33PF 25V NPO 0603 *	5	EA	C49,C50,C51,C52,C54,
28	381-220-032554	SMD CC 22pF 25V NPO 0603 *	3	EA	CA1,C7,C8,
29	330-100-25275	MINI EC 10uF/25V TP 105C SM *	5	EA	EC5,EC6,EC8,EC9,TC16,
30	330-220-16275	MINI EC 22uF/16V TP 105C SM *	5	EA	TC5,TC6,TC10,TC11,TC12,
31	330-470-16275	EC 47uF/16V 5x7 *	5	EA	EC3,EC11,EC13,TC15,EC15,
32	330-101-16275	MINI EC 100uF/16V 105C SM TPMI	6	EA	TC3,TC4,EC12,TC20,EC14,EC16,
33	330-471-16205	MINI EC 470uF/16V TP 105C SK *	5	EA	EC1,EC7,EC10,TC13,TC14,
34	330-102-06205	MINI EC 1000uF/6.3V TP SK *	3	EA	TC1,TC7,TC9,
35	281-035-0R04	SMD R 0 ohm 5% 0603 *	1	EA	R20,
36	281-035-3304	SMD R 33 ohm 0603 *	4	EA	R7,R8,R10,R11,
37	281-035-4704	SMD R 47 ohm 0603 *	5	EA	R28,R33,R34,R63,R64,
38	281-035-7504	SMD R 75 ohm 0603 *	3	EA	R49,R50,R51,
39	281-035-1014	RES 100 5% 1/10W 0603 #	12	EA	R18,R21,R22,R23,R24,R25,
					R26,R36,R37,R47,R52,R54,
40	281-035-1814	SMD R 180 ohm 0603 *	1	EA	R43,
41	281-035-4714	SMD R 470 ohm 0603 *	2	EA	R17,R41,
42	281-035-5114	SMD R 510 ohm 0603 *	4	EA	R55,R53,R65,R66,
43	281-035-6214	SMD R 0603 620 ohm *	2	EA	R56,R57,
44	281-035-1024	RES 1K 5% 1/10W 0603 #	1	EA	R40,

45	281-035-4724	SMD R 4.7 K 0603	*	1	EA	R39,
46	281-035-1034	RES 10K 5% 1/10W 0603	#	10	EA	R3,R6,R14,R15,R16,
						R27,R31,R32,R35,R42,
47	281-035-4734	SMD R 47K 0603	*	1	EA	R38,
48	281-035-1044	RES 100K 5% 1/10W 0603	#	1	EA	R1,
49	281-035-1064	SMD R 10M 0603	*	2	EA	R59,R5,
50	281-031-62014	SMD R 6.2K 0603	*	1	EA	R58,
51	281-031-20014	SMD R 2K 1% 0603	*	1	EA	R60,
52	232-R03-505T	WR-C-5W-0.035ohm 5% *		1	EA	RS1,
53	282-000-2454	SMD R ARRAY 0 ohm x4 1206	*	13	EA	L3,L5,L6,L7,L8,
						L9,L10,L11,L12,L13,
						L14,L15,L16,
54	282-103-2454	SMD R ARRAY 10K 8P4R 1206	*	6	EA	RP1,RP2,RP3,RP4,RP5,RP7,
55	409-005-0103	PHONE JACK TC099 SCJ -0346M2(B)		1	EA	J13,
56	506-178-E62BP-40	SMD CPU WINBOND;W78E62BP-40	*	1	EA	U3,
57	505-091-7805	78L05 REGULATOR IC 5V/0.1		1	EA	U13,
58	505-005-1084-1	IC 3.3V/5A AIC1084-33CT		2	EA	U2,U7,
59	506-2AI-C1578	IC DC TO DC AIC1578 SMD	*	1	EA	U9,
60	506-5NM-24C16	LINEAR OC NM24C16M-8 (SMD)	*	1	EA	U6,
61	506-524-LC21	MEMORY IC 24LC21 SMD	*	1	EA	U10,
62	518-1CE-9435	MOSFET CE9435A C08	*	2	EA	U8,U1,
63	506-SGM-ZAN1	SCALER IC+OSD+S/D GMZAN1 (SMD*		1	EA	U5,
64	504-000-6300L	RESET IC. V6300L T092(DIP)		1	EA	U4,
65	522-030-B340-T	SCHOTTKY SB340 TP	#	1	EA	D5,
66	518-02N-3904	TR. 2N3904 SMD	*	3	EA	Q2,Q3,Q4,
67	530-160-0016-S	CRYSTAL 16MHZ HC-49US		1	EA	X1,
68	531-500-12123	OSC 50Mhz HALF SIZE 3.3V	*	1	EA	
69	550-850-5000	FUSE 125V/5A		1	EA	F3,

70	550-850-2000	PICO FUSE 125V 2A DIP *	1	EA	FA1,
71	630-015-1001	D-SUB CONNECTOR 15P FEMA0.6D	1	EA	P1,
72	630-008-C001	JST 1.5mm HEADER ZR S8B-ZR	1	EA	J9,
73	409-001-0201	PV-564DA DC POWER JACK	1	EA	J11,
74	630-030-9001	30 PIN 0.5MM FPC FH12-30S-.5SH	1	EA	J7,
75	630-045-9001	45 PIN 0.5MM FPC FH12-45S-.5SH	1	EA	J3,
76	630-006-AH00	BASE 6 PIN 1.25mm(RIGHT ANGLE)	1	EA	J4,
77	745-330-2062-3	33uH C4426-060128YB-UL/ *	1	EA	L31,
78	745-050-3083	FILTER 3T 38+-15% TX08350NB	3	EA	L35,L36,L37,
79	755-001-C04D	EMI POWER FILTER KHLIC-04D #	1	EA	FL1,
80	745-101-2064B	100uH CHOKE 1A 10% *	1	EA	L20,Comments:
81	780-103-6010	BK1608HS601 0603 600Ω*	4	EA	L1A,L42,L43,L44,
82	780-103-3000	SMD BEAD SBK160808-300Y*	6	EA	L2,L38,L39,L40,L41,L45,
83	780-104-6010	SMD BEAD SBK-201209T-601Y-S *	8	EA	L18,L23,L25,L26,L27,
					L28,L30,L32,
84	780-104-2600	SMD BEAD 0805 26ohm *	1	EA	L29,
85	780-104-1020	SMD BEAD BK2125 HS102 *	1	EA	L17,
86	780-107-1210	SMD BEAD MLB-321611-0120P-N1	3	EA	L4,L19,L24,
87	780-407-6010	BK32164S601/ 0603x4 *	1	EA	L34,
88	622-106-0201	JUMPER 2.54mm 0.6D	1	EA	J1,
89	504-A00-8227	AUDIO AMT IC TA8227P/UTC *	1	EA	U12,
90	200-101-5001	AY565 M/B REV:A *	1	EA	
91	504-A00-2257-S	VOLUME CONTROL IC PT2257-S *	1	EA	U11,
92	385-154-032584	SMD Y5V 0.15uF 0603 25V *	2	EA	C65,C66,
93	381-221-035054	SMD CC NPO 0603 220pF 50V *	2	EA	C67,C68,
94	481-LCC-0440	PLCC SOC. 44P 1.27 *	1	EA	P2,
95	630-002-1009	BASE 2Pin JWT A2001 PITCH 2.0	2	EA	J14,J15,
96	382-223-032564	SMD CC 0.022uF 25V X7R 0603 *	2	EA	L58,L60,

97	899-400-AY565	AY-565 VR CONTROL/B ASSY	1	EA	
98	401-170-0200	MD-848 TACT SW H=5mm TSAB1	5	EA	S1,S2,S3,S4,S5,
99	520-005-5302	LED LT5302-23 DIP / *	1	EA	D1,
100	630-008-C001	JST 1.5mm HEADER ZR S8B-ZR	1	EA	J1,
101	200-701-AY565	MAG AY565 KEY BOARD *	1	EA	
102	902-AY0-1002	AY-565 +TC099 ADT MAG	1	EA	
103	100-003-3032	R3.0xL3.0mm ISO *	9	EA	SHIM/B+LCD FRAME
104	100-006-3062	R3x6mm TP+ISO *	8	EA	BKT M/B+SHI M/B*2
					M/B+LCD FRAME*4
					M/B+LCD FRAME*4
					INVERTER PCB+LCD FRANE*2
105	100-008-3032	SCREW R3*8mm ISO	4	EA	LCD FRAME+LCD PANEL*4
106	105-008-3012	SCREW T3*8mm TP1	11	EA	COVER OSD+F/C*2
					LCDFRAME+F/C*4
					SPEAKER+F/C*4
					CONTROL/B*1
107	106-005-2532	SCREW M2.5xL5 ISO*	2	EA	FOR FROM
108	107-008-3032	B M3xL8 ISO *	7	EA	STAND BKT BASE+HINGE*4
					HINGE+ STAND F/C*3
109	107-010-3073	B 3*10 TP4 *	2	EA	BASE F/C+BASE R/C*2
110	107-008-3073	B 3*8 TP4 *	2	EA	BKT STAND BASS+STANDBASE*2
111	107-010-3073	B 3*10 TP4 *	8	EA	F/C+R/C*4
					STAND BASECOVER+STAND BASE*4
112	108-S10-4032	SCREW B/W-S M4xL10 ISO *	4	EA	BKT ROTATER/L+HINGE*4
113	111-014-0201	RUBBER WASHER 20*7*1.0	4	EA	
114	121-001-AY565	AY565 BRACKRT M/B SPCC T:1.0 *	1	EA	
115	121-002-AY565	AY565 BRACKET ROTATE SPCC T:3*	1	EA	
116	121-003-AY565	BRACKET ROTATE L SPCC T:3mm *	1	EA	

117	121-004-AY565	AY565 BRACKET BASE SECC T:2.0*	1	EA	
118	123-001-AY565	LCD FRANE ADT SECC1.0 W/GLASS*	1	EA	
119	123-002-AY565	SHIELD M/B SPTE T:0.3mm *	1	EA	
120	126-001-AY565	AY565 HINGE ASM SECC T:2.0mm *	1	EA	
121	151-001-AY565	AY565 REAR CABINRT *	1	EA	
122	151-101-0565	565 FRONT PANEL MAG *	1	EA	
123	151-701-AY565	AY565 ATAND FRONT COVER *	1	EA	
124	151-702-AY565	AY565 STAND REAR COVER *	1	EA	
125	151-703-AY565	AY565 STAND BASE *	1	EA	
126	151-704-AY565	AY565 STAND BASE COVER *	1	EA	
127	154-001-AY565	AY565 COVER OSD KNOB *	1	EA	
128	154-002-AY565	AY565 KNOB OSD *	1	EA	
129	154-003-AY565	AY565 COVER SPK R *	1	EA	
130	154-004-AY565	AY565 COVER SPK L *	1	EA	
131	154-005-AY565	AY565 LED LENS *	1	EA	
132	154-006-AY565	AY565 COVER CODE *	1	EA	
133	154-007-AY565	PROTECT CAP *	1	EA	
134	631-006-7002-1	6P INVERTER 1.25m10cm14/15	1	EA	
135	631-008-G003-W	BM780 170mm CORE K5A RH *	1	EA	FOR CONTROL/B*1
136	631-030-F0003	30P FFC CABLE L20cm T28mm *	1	EA	
137	631-045-F0003	45P FFC CABLE L20cm T28mm *	1	EA	
138	824-002-AY565	SPK BOX 20*40 2W 8ohm *	1	EA	
139	831-119-0501	PVC BLACK TAPE UL206W19mm *	0	EA	
140	831-140-0501	PVC BLACK TAPEUL206 W4cm*	0	EA	
141	831-F05-0100	AY565 TAPE Y-4914/3M W5T.25 *	0	EA	
142	928-200-AY565	GLASS FOR PANEL 315x240x2.8 *	1	EA	
143	131-030-2120	HS12 D-CONNER 3D*12mm	2	EA	
144	760-100-31512	CORE K5ARP 31x5x12mm *	2	EA	

145	705-350-2913	LCD PANEL ADT L150X2M-1 EC:-2 *	1	EA	
146	849-200-0005	INVETER ACER 15" L150X2M-1	1	EA	
147	899-B01-5000	FOR ADT 15"PANEL INTERFACE BD	1	EA	
148	200-003-PRO2K	INTERFACE PCB ACER 15"L150X2M*	1	EA	
149	630-080-B001	CNC PITCH0.6 FX8-80P-SV/HRS *	1	EA	2nd 630-080-PVS0
150	630-030-9001	30 PIN 0.5MM FPC FH12-30S-.5SH	1	EA	
151	630-045-9001	45 PIN 0.5MM FPC FH12-45S-.5SH	1	EA	

MEMO
