

572V
772DT
Service Manual

TABLE OF CONTENTS

SERVICE WARNING	3
A. IMPORTANT SAFETY INSTRUCTION	3
B. SPECIFICATIONS	4
C. TIMING CHART	5
D. CONTROL LOCATION	6
E. CONDUCTION VIEW	7
F. ADJUSTMENT PROCEDURE	12
G. TROUBLE SHOOTING HINTS	13
H. REPLACEMENT PARTS LIST	19
I. BLOCK DIAGRAM	27
J. SCHEMATIC DIAGRAM	28

WARNING

To prevent from fire or shock hazard, do not expose monitor to any rain or any form of water. High voltage is inside the monitor so please do not remove the back cover of the cabinet if you are not a qualified monitor engineer. Contact the local dealer or the nearest **Proview** branch office if you need help.

A. IMPORTANT SAFETY INSTRUCTION

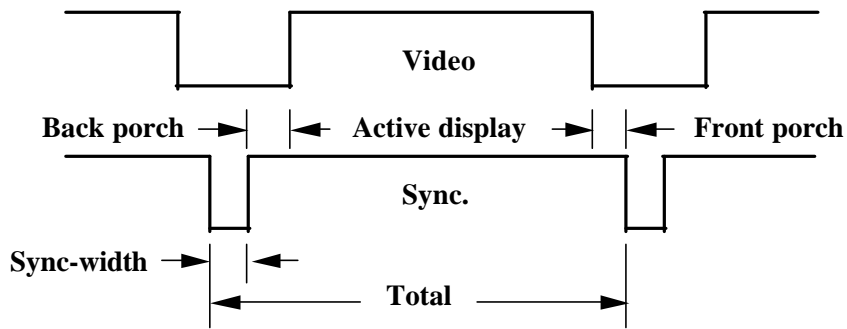
Prior to using this service manual, please ensure that you have carefully followed all the procedures outlined in the user's manual for this product.

1. Read all of these instructions.
2. Save these instructions.
3. Follow all warnings and instructions marked on the product.
4. Unplug this product from the wall outlet before cleaning. Do not use liquid cleaners or aerosol cleaners, use a damp cloth for cleaning.
5. Do not use this product near water.
6. Do not place this product on an unstable cart, stand or table. The product may fall, causing serious damage to the product.
7. Slots and openings in the cabinet and the back or bottom are provided for ventilation, to ensure reliable operation of the product and to protect it from overheating, those openings must not be blocked or covered. The openings should never be blocked by placing the product on a bed, sofa, rug, or other similar surface. This product should not be placed in a built-in installation less proper ventilation is provided.
8. This product should be operated from the type of power source indicated on the marketin label. If you are not sure of the type of power available, consult your dealer or local power company
9. This product is equipped with a 3-wire grounding type plug, a plug having a third (grounding) pin. This plug will only fit into a grounding-type power outlet. This is a safety feature, if you are unable to insert the plug into the outlet, contact your electrician to replace your obsolete outlet. Do not defeat the purpose of the grounding-type plug.
10. Do not allow anything to rest on the power cord. Do not locate this product where persons will walk on the cord.
11. If an extension cord is used with this product, make sure that the total of the ampere ratings on the product plugged into the extension cord to the waplugged into outlet does not exceed 15 ampere.
12. Never push objects of any kind into this product through cabinet slots as they may touch dangerous voltage points or short out parts that could result in a risk of fire or electric shock. Never spill liquid of any kind on the product.
13. Do not attempt to service this product yourself, as opening or removing covers may expose you to dangerous voltage points or other risks. Refer all servicing to service personnel.
14. Unplug this product from the wall outlet and refer servicing to qualified service personnel under the following conditions.
 - a. When the power cord or plug is damaged or frayed.
 - b. If liquid has been spilled into the product.
 - c. If the product has been exposed to rain or water.
 - d. If the product does not operate normally, when the operating instructions are followed. Adjust only those controls that are covered by the operating instructions since improper adjustment of other controls may result in damage and will often require extension work by a qualified technician to restore the product to normal operation.
 - e. If the product has been dropped or the cabinet has been damaged.
 - f. If the product exhibits a distinct change in performance, indicating a need for service.

B. SPECIFICATIONS

Model	17"	15"
1. Maximum Resolution	1280 x 1024 @ 75Hz	1024 x 768 @ 75Hz
2. Recommend Resolution	1280 x 1024 @ 60Hz	1024 x 768 @ 60Hz
3. Synchronization Range		
Horizontal	31 – 80 KHz	30 – 60 KHz
Vertical	60 – 75 Hz	60 – 75 Hz
4. Active Display Area	337mm (H) x 270mm (V)	304mm (H) x 228mm (V)
5. Dot Pitch	0.264(H) x 0.264(V) mm	0.297(H) x 0.297(V) mm
6. Support display colors	16.7M color	16.7M color
7. Contrast Ratio (Typical)	350 : 1 (QDI)	400 : 1
8. Luminance of White	300cd/m ²	250cd/m ²
9. Bandwidth	135MHz	80MHz
10. User Control	6 Key Switch	
11. OSD Function	Brightness, Contrast, H-Pos, V-Pos, H. Size, Phase, Color Select, Auto, Reset, Language, OSD Adjust, Exit	
12. View Angle		
Horizontal	75 / 75	70 / 70
Vertical	65 / 60	60 / 60
13. Power Source	100 – 240 Vac 60 / 50 Hz	
14. Power Consumption	60W (max.)	48W (max.)
15. Connection Type	15 Pin D Type	
16. Input Signal		
Video	Analog R.G.B. , 0.7Vp-p / 75 Ohms	
Sync.	TTL level, positive or negative polarity	
17. Color Temperature	Cool / Natural / Warm	Cool / Warm
18. Dimension (WxHxD)	Packing	
	Set	
	525mm x 510mm x 155mm	410mm x 420mm x 130mm
	438mm x 440mm x 177mm	381mm x 373mm x 150mm
19. Monitor Weight	Net	
	Gross	
	6.3kg	3.4kg
	7.5kg	4.8kg
20. Base Operation		
Tilt	0 / + 15 degree	
21. Power Saving		
ON	< 60W	< 48W
STAND BY	< 5W	< 5W
OFF	< 5W	< 5W
22. Signal Connector Pin Assignment		
Pin No.		
	1. Red	9. V _{DD} from PC for DDC
	2. Green	10. Sync. Ground
	3. Blue	11. Ground
	4. Ground	12. SDA (For DDC)
	5. Self Test	13. Horizontal Sync.
	6. Red Ground	14. Vertical Sync.
	7. Green Ground	15. SCL (For DDC)
	8. Blue Ground	
23. Audio signal	3.5F stereo phone jack 2.5+2.5W 80 Speaker	

C.TIMING CHART



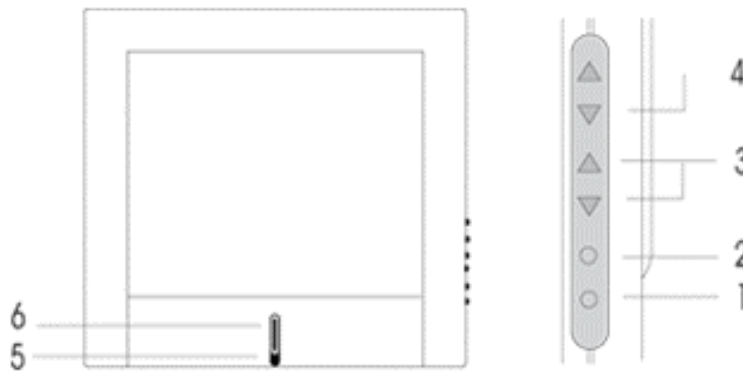
Modes \ Preset	VGA 720X400	VGA 640X480	VESA 640X480	VESA 640X480	VESA 800X600	VESA 800X600	VESA 800X600
Pixel clock (MHz)	28.325	25.175	31.500	31.500	36.000	40.000	50.000
H-Frequency (KHz)	31.472	31.469	37.861	37.500	35.156	37.879	48.077
H-Total (μs)	31.774	31.778	26.413	26.667	28.444	26.400	20.800
H-Active Display (μs)	25.419	25.422	20.317	20.317	22.222	20.000	16.000
H-Blanking (μs)	6.355	6.356	6.095	6.349	6.222	6.400	4.800
Front Porch (μs)	0.635	0.636	0.762	0.508	0.667	1.000	1.120
H-Sync-width (μs)	3.813	3.813	1.270	2.032	2.000	3.200	2.400
H-Back Porch (μs)	1.906	1.907	4.063	3.810	3.556	2.200	1.280
V-Frequency (Hz)	70.1	59.94	72.81	75.0	56.25	60.3	72.2
V-Total (ms)	14.267	16.683	13.735	13.333	17.778	16.579	13.853
V-Active Display (ms)	12.710	15.253	12.678	12.800	17.067	15.840	12.480
V-Blanking (ms)	1.557	1.430	1.057	0.533	0.711	0.739	1.373
V-Front Porch (ms)	0.413	0.318	0.238	0.027	0.028	0.026	0.770
V-Sync-width (ms)	0.064	0.064	0.079	0.080	0.057	0.106	0.125
V-Back Porch (ms)	1.080	1.049	0.740	0.427	0.626	0.607	0.478
H/V Sync. Polarity	- +	- -	- -	- -	+ +	+ +	+ +
Interlace	NONE	NONE	NONE	NONE	NONE	NONE	NONE

Modes \ Preset	VESA 800X600	VESA 1024X768	VESA 1024X768	VESA 1024X768	* VESA 1280X1024	* VESA 1280X1024
Pixel clock (MHz)	49.500	65.000	75.000	78.750	108.00	135.00
H-Frequency (KHz)	46.875	48.363	56.476	60.023	63.981	79.976
H-Total (μs)	21.333	20.677	17.707	16.660	15.630	12.540
H-Active Display (μs)	16.162	15.754	13.563	13.003	11.852	9.481
H-Blanking (μs)	5.172	4.923	4.053	3.657	3.778	3.022
Front Porch (μs)	0.323	0.369	0.320	0.203	0.444	0.119
H-Sync-width (μs)	1.616	2.092	1.813	1.219	1.037	1.067
H-Back Porch (μs)	3.232	2.462	1.920	2.235	2.296	1.837
V-Frequency (Hz)	75.0	60.0	70.1	75.0	60.0	75.0
V-Total (ms)	13.333	16.666	14.272	13.328	16.661	13.329
V-Active Display (ms)	12.800	15.880	13.599	12.795	16.005	12.804
V-Blanking (ms)	0.533	0.786	0.673	0.533	0.656	0.525
V-Front Porch (ms)	0.021	0.062	0.053	0.017	0.016	0.013
V-Sync-width (ms)	0.064	0.124	0.106	0.050	0.047	0.038
V-Back Porch (ms)	0.448	0.600	0.513	0.466	0.594	0.475
H/V Sync. Polarity	+ +	- -	- -	+ +	+ +	+ +
Interlace	NONE	NONE	NONE	NONE	NONE	NONE

* 1280 X 1024 resolution is not available in 15" model.

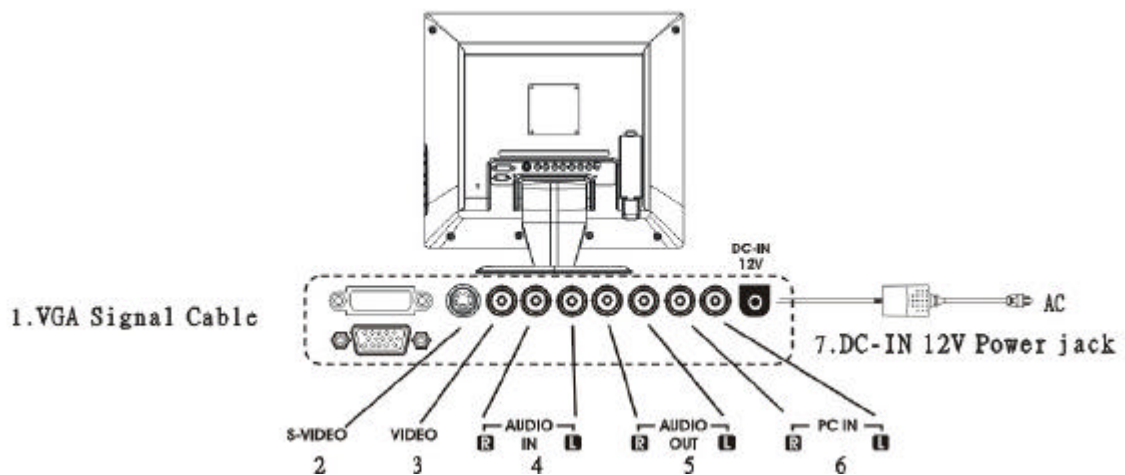
D. CONTROL LOCATION

Font control panel



- | | |
|------------------------|-----------------------|
| 1 . Auto Button (AUTO) | 4 . VOL Button (+, -) |
| 2 . Menu Button (MENU) | 5 . Power Button |
| 3 . CH Button (,) | 6 . Power indicator |

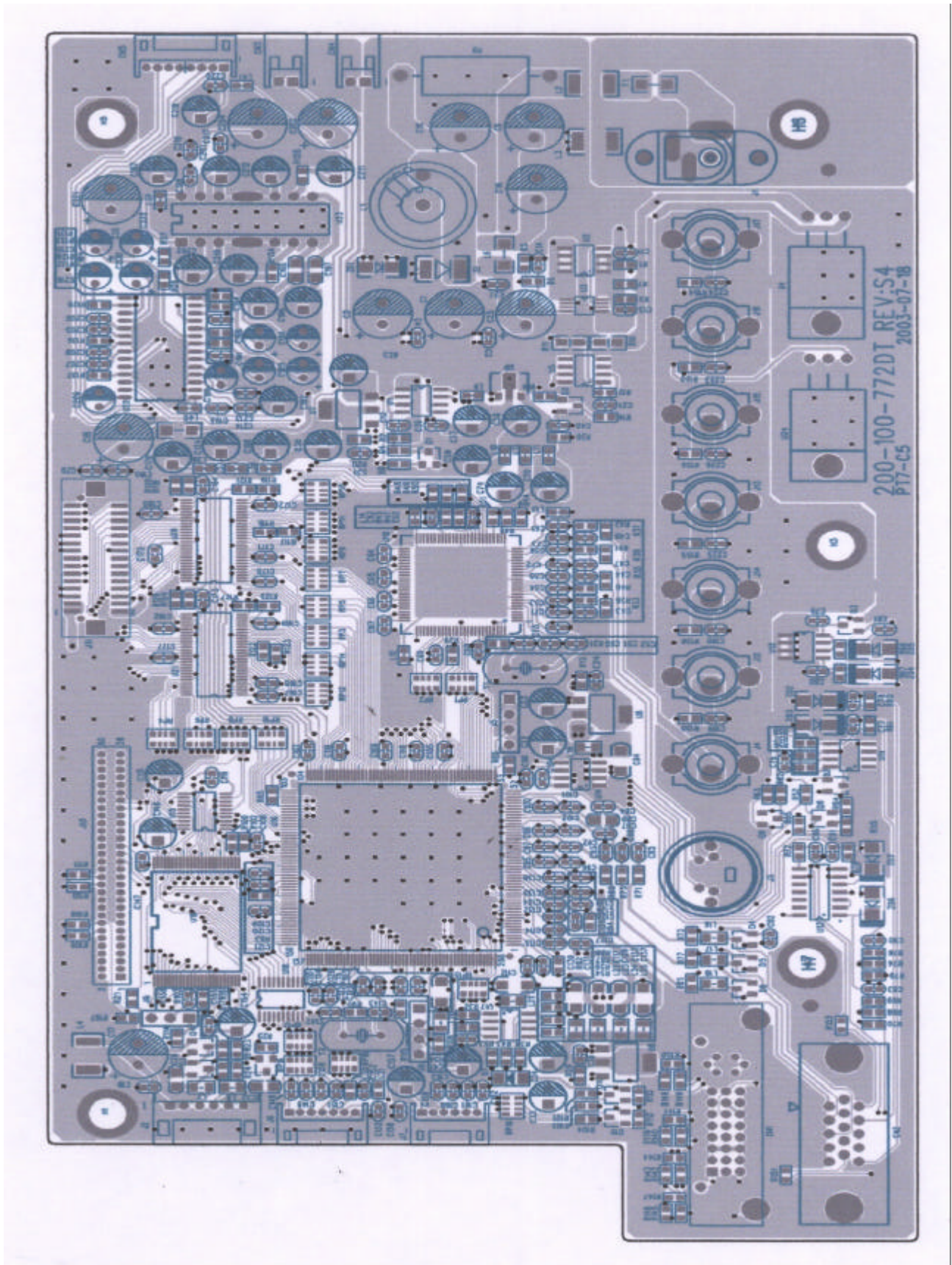
Rear panel



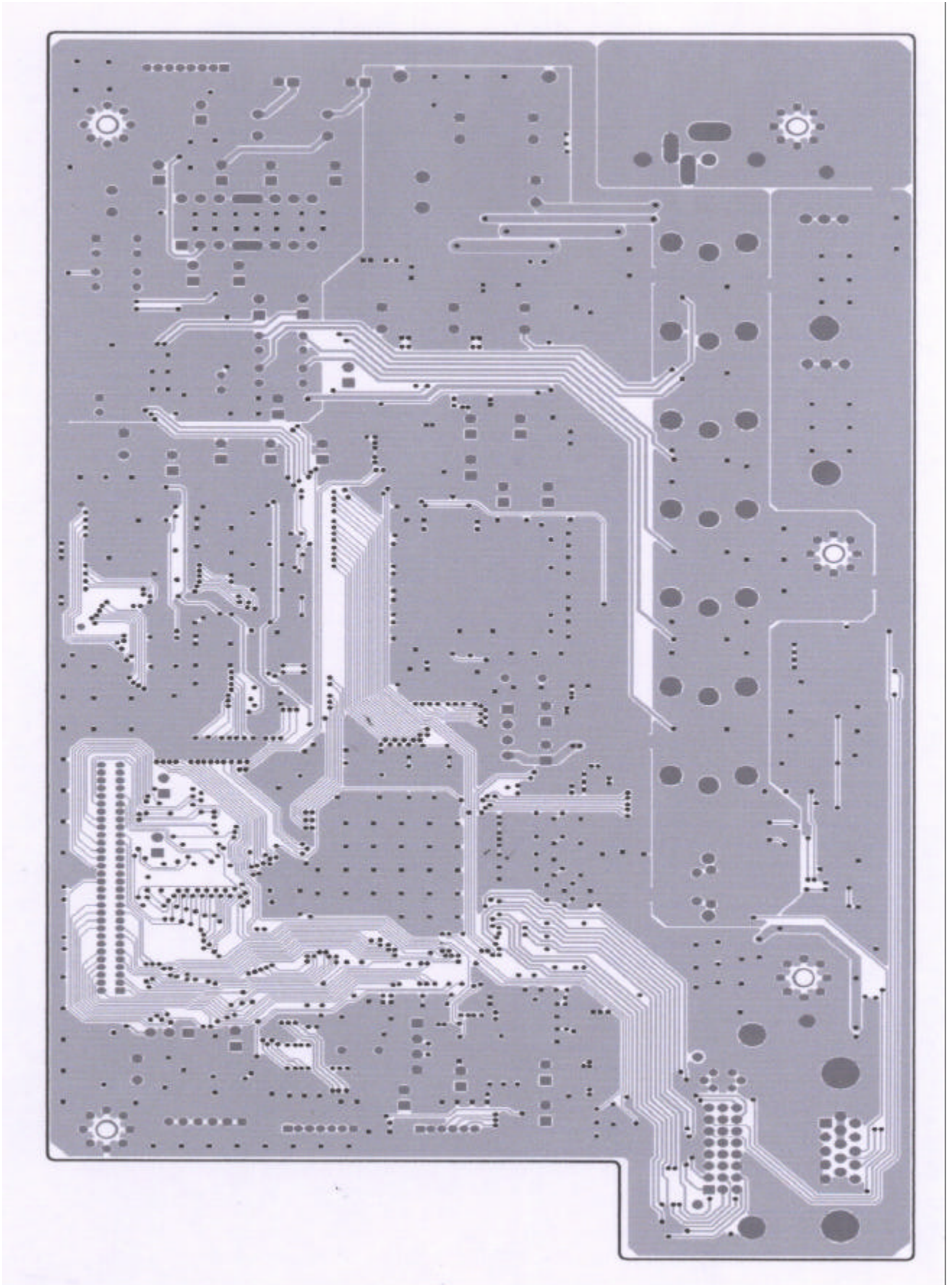
- | | |
|---------------|----------------|
| 1. VGA/DVI IN | 5. AUDIO OUT |
| 2. S-VIDEO IN | 6. PC AUDIO IN |
| 3. VIDEO | 7. DC IN |
| 4. AUDIO IN | |

E. CONDUCTION VIEW

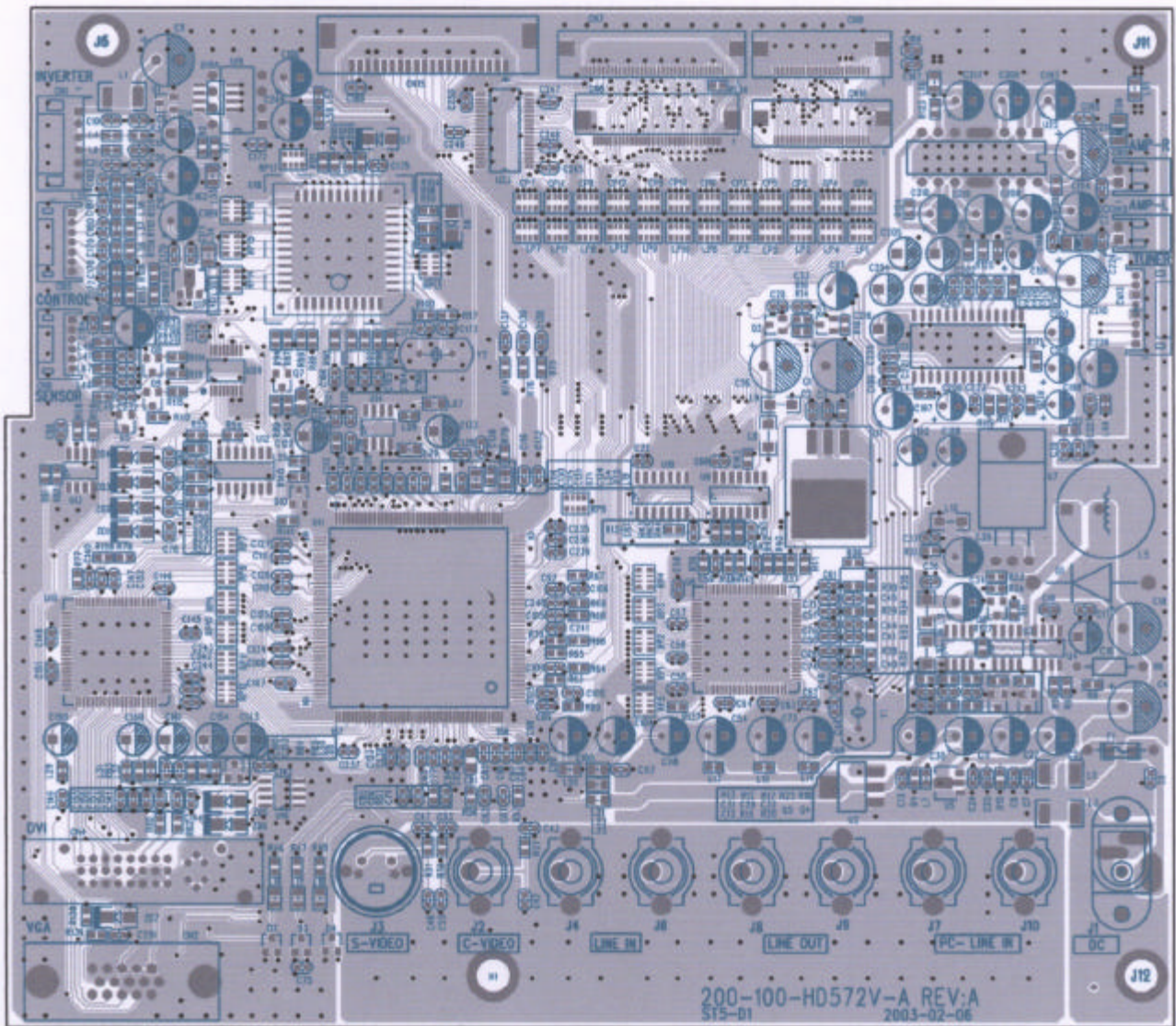
772DT MAIN BOARD (Component Side)



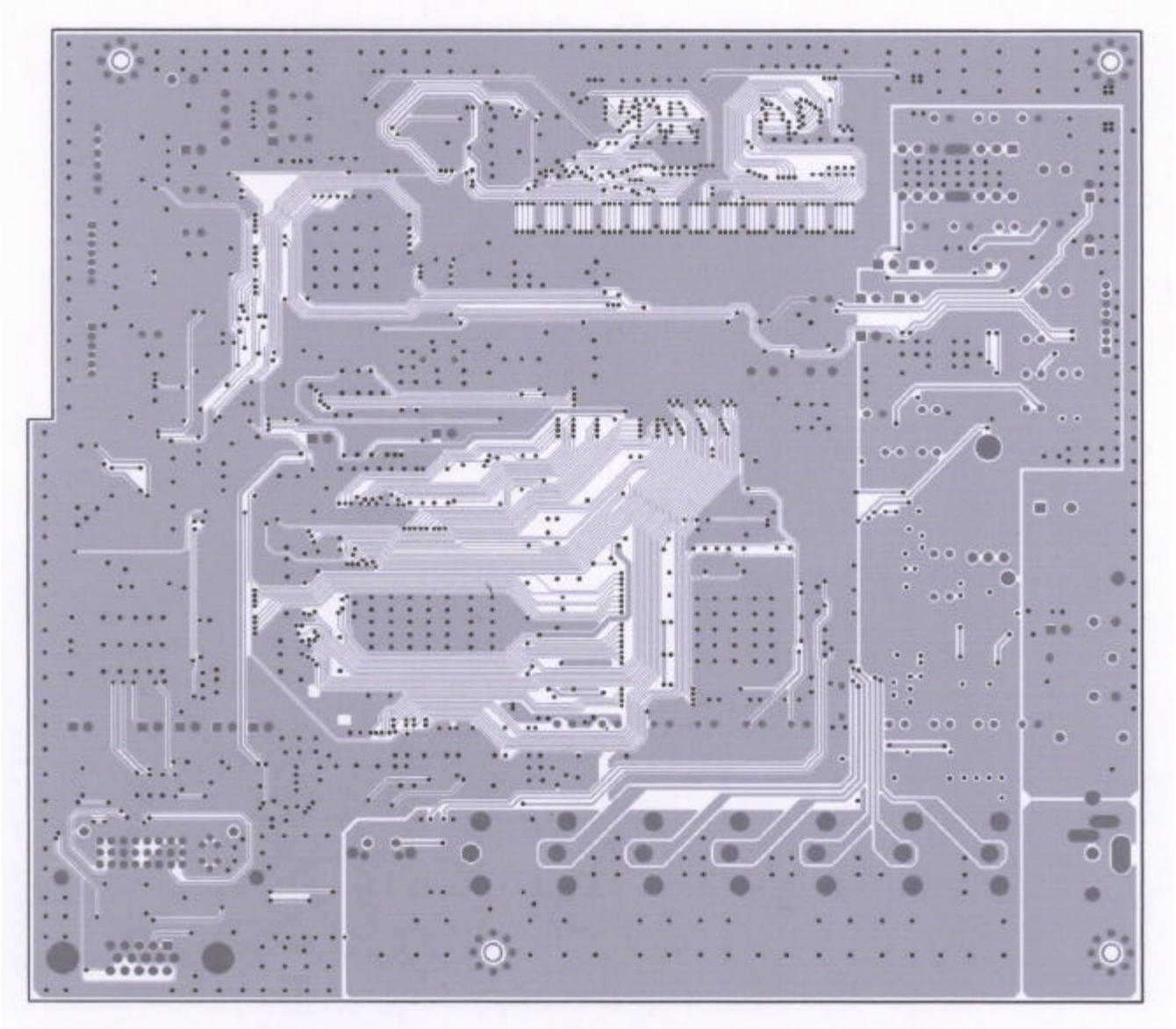
772DT MAIN BOARD (Solid Side)



572V MAIN BOARD (Component Side)



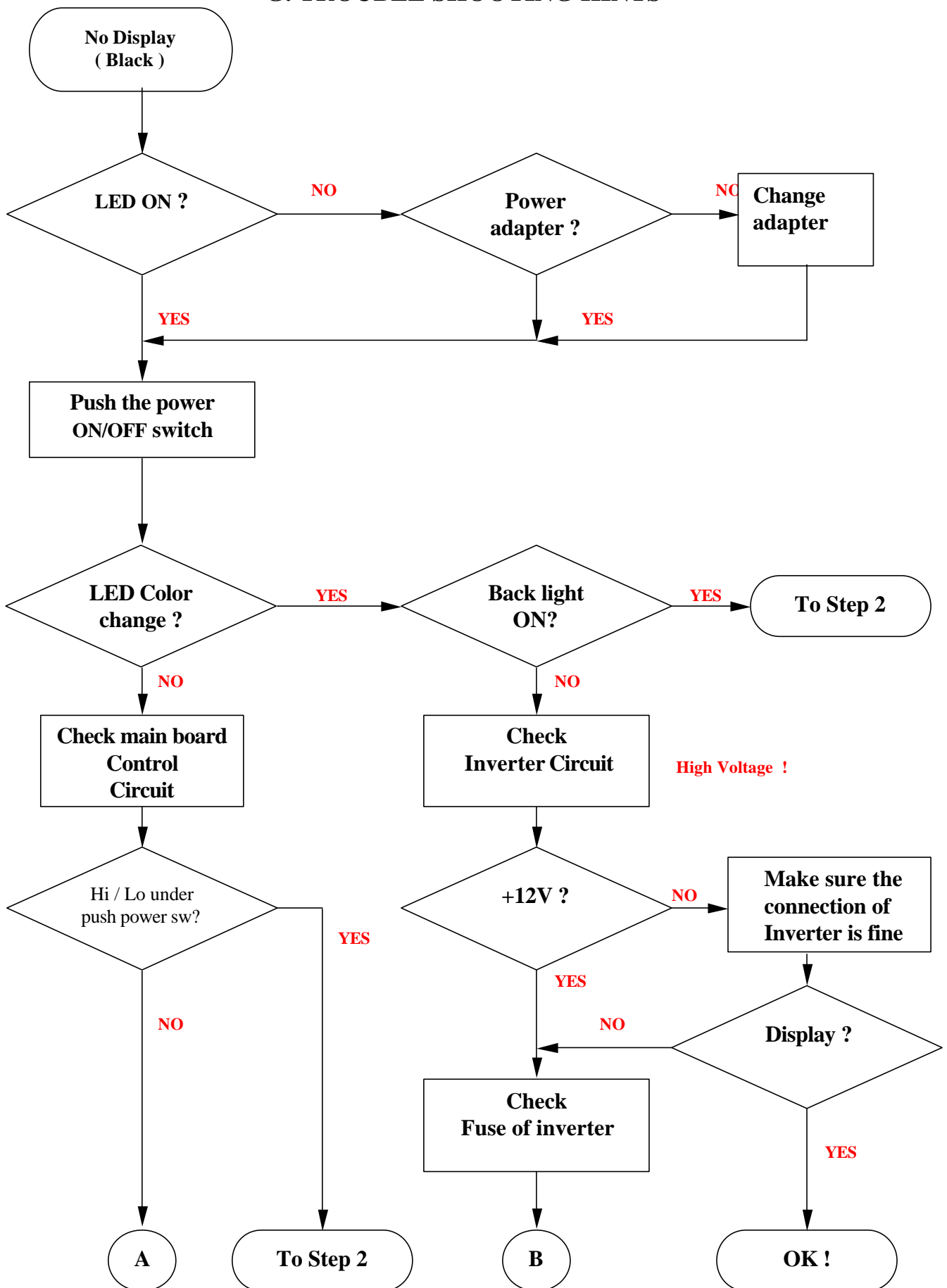
572V MAIN BOARD (Solid Side)

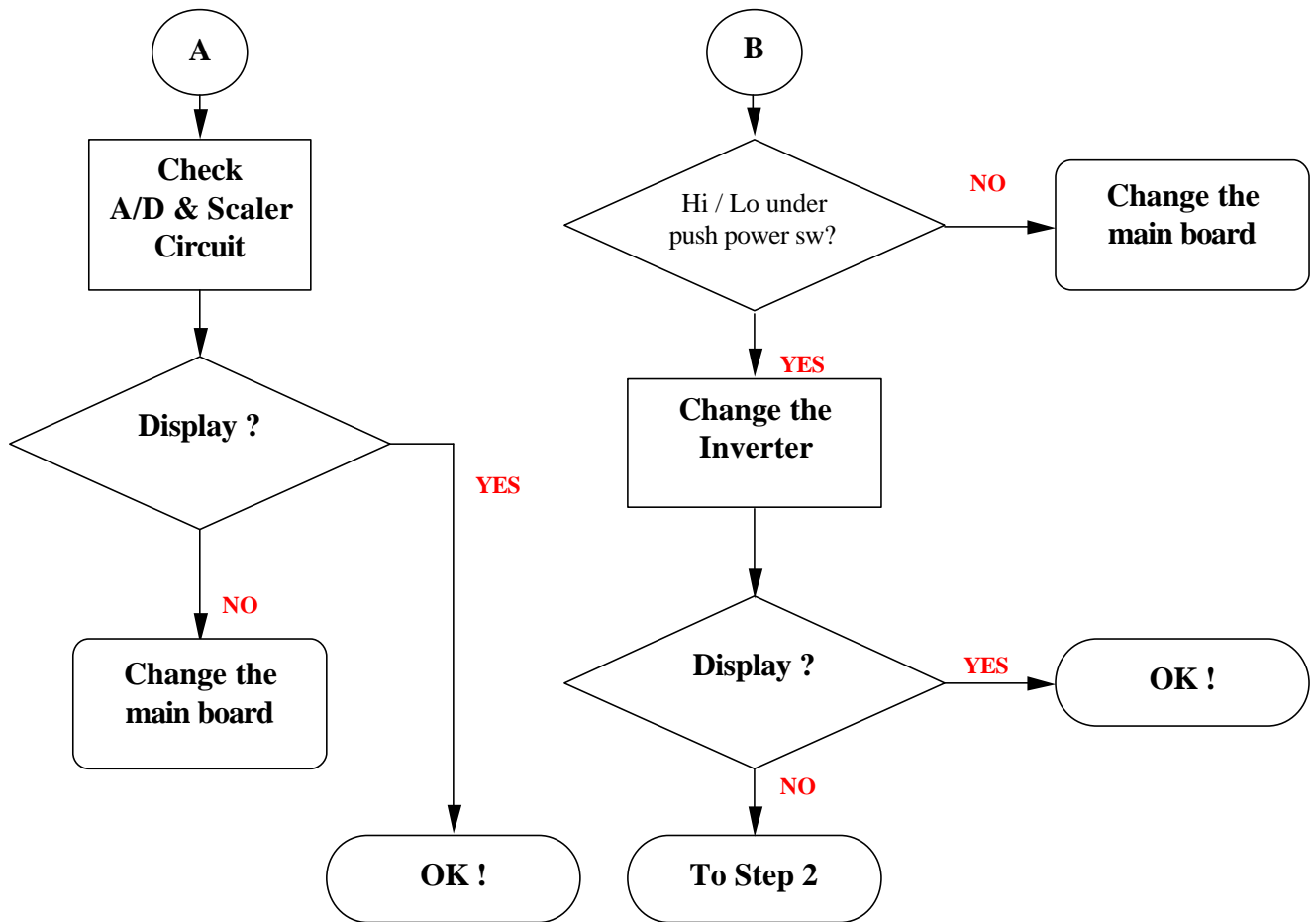


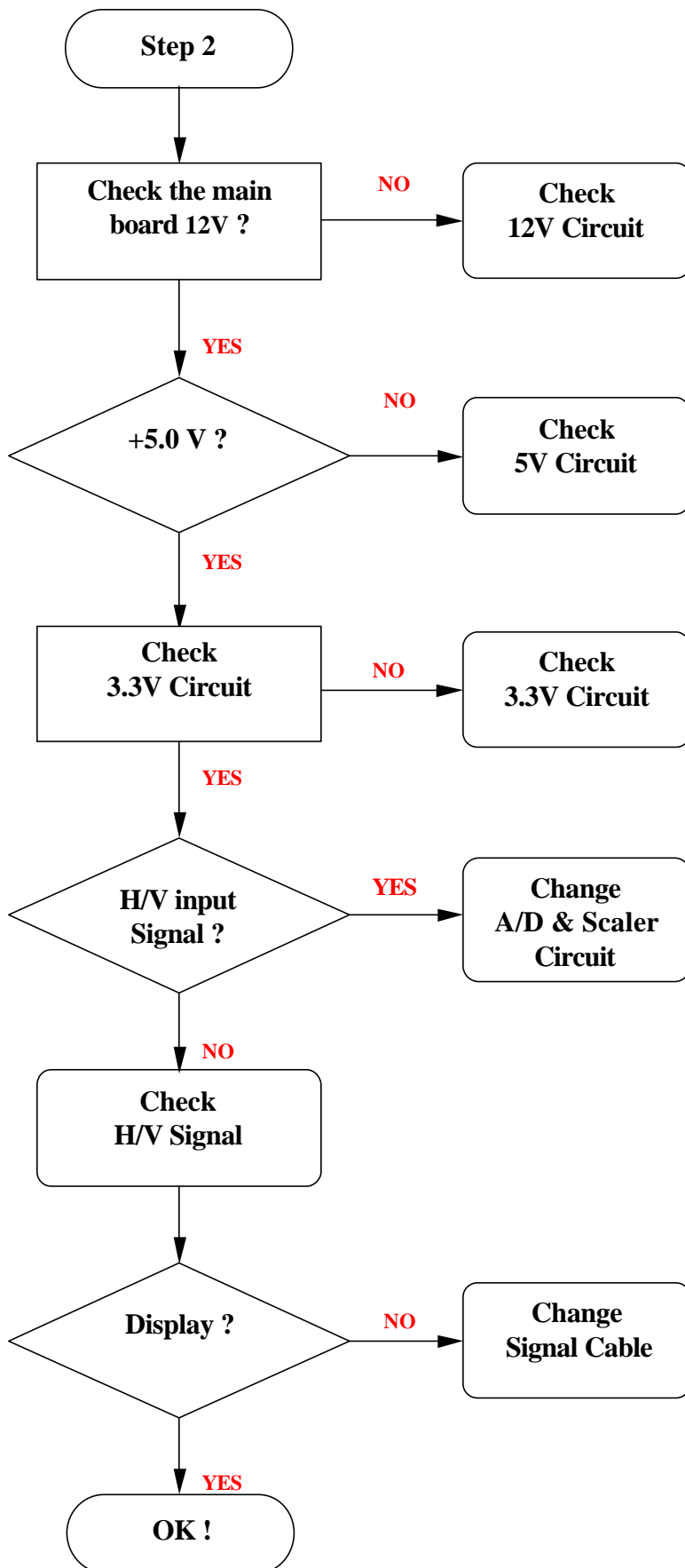
F. ADJUSTMENT PROCEDURE

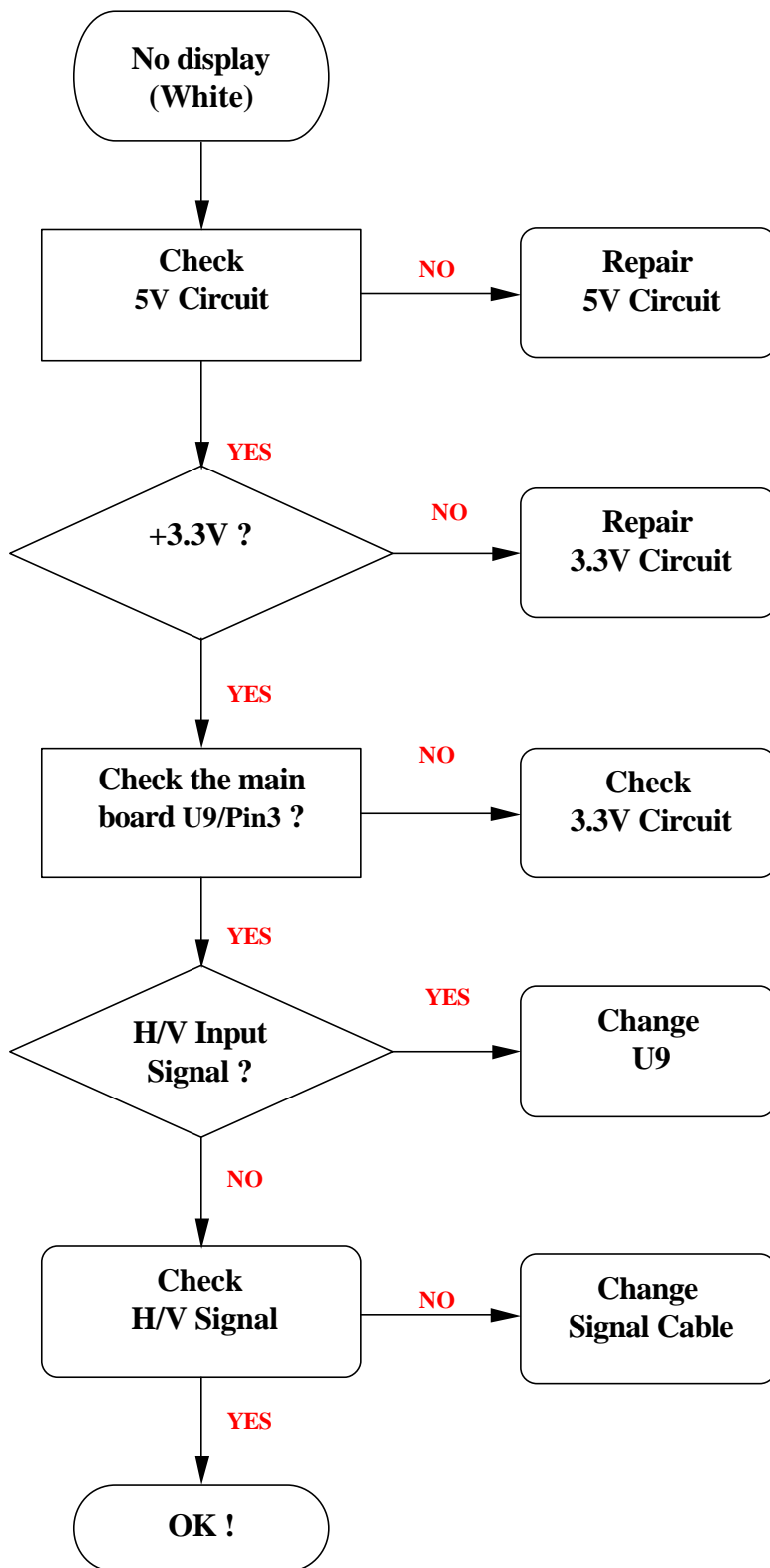
ITEM Program Menu.		# Test Meter * Test Point @ Pattern	Operation	Check Value
A	B+ Check	# Digital Voltmeter * CN7 @ Crosshatch Pattern (31.5KHz,640x480)	<ol style="list-style-type: none"> 1. Plug power cable into the adapter, check adapter power indicator light up green. 2. Make sure the voltage of the power plug (CN7) on the main PCB to the value shown at right. 	12.0V ±0.2V
B	Power Saving Check	# Wattmeter # PC or Pattern generator @ Crosshatch Pattern (31.5KHz,640x480)	<ol style="list-style-type: none"> 1. Unplug the signal cable into the monitor. 2. Turn the power switch of the monitor ON. 3. Check monitor power indicator light up orange. 4. Make sure the wattmeter value shown at right. 5. OSD will be display “NO SIGNAL” Picture. 	< 5W
C	Into Factory mode	# PC or Pattern generator @ Crosshatch Pattern (31.5KHz,640x480)	<ol style="list-style-type: none"> 1. Hold < key, then turn the power switch of the monitor OFF. 2. Hold > key, then turn the power switch of the monitor ON. 3. You can into factory adjustment mode. 	
D	Auto mode Check	# PC or Pattern generator @ Crosshatch Pattern (1024x768/60Hz)	<ol style="list-style-type: none"> 1. Press and release the MENU knob to activate the OSD menu. 2. Move the OSD to the AUTO function, press MENU key auto adjust display mode to its utmost performance according to VGA setting. 3. In the event of the display image needs further adjustment 	
E	White Balance Adjust	# PC or Pattern generator @ White Pattern (1024x768/60Hz)	<ol style="list-style-type: none"> 1. Move the OSD to the COLOR mode (AUTO COLOR). 2. set color is 9300°K using the OSD, Check the value shown at right. Y = 220±0.1FL x = 0.283±0.01 y = 0.297±0.01 3. set color is 7500°K using the OSD, Check the value shown at right. Y = 220±0.1FL x = 0.299±0.01 y = 0.315±0.01 3. set color is 6500°K using the OSD, Check the value shown at right. Y = 220±0.1FL x = 0.313±0.01 y = 0.329±0.01 	
F	OSD Language Setting	# PC or Pattern generator	<ol style="list-style-type: none"> 1. Move the OSD to the LANGUAGE mode. 2. You can choose one of the eight language you need. 	

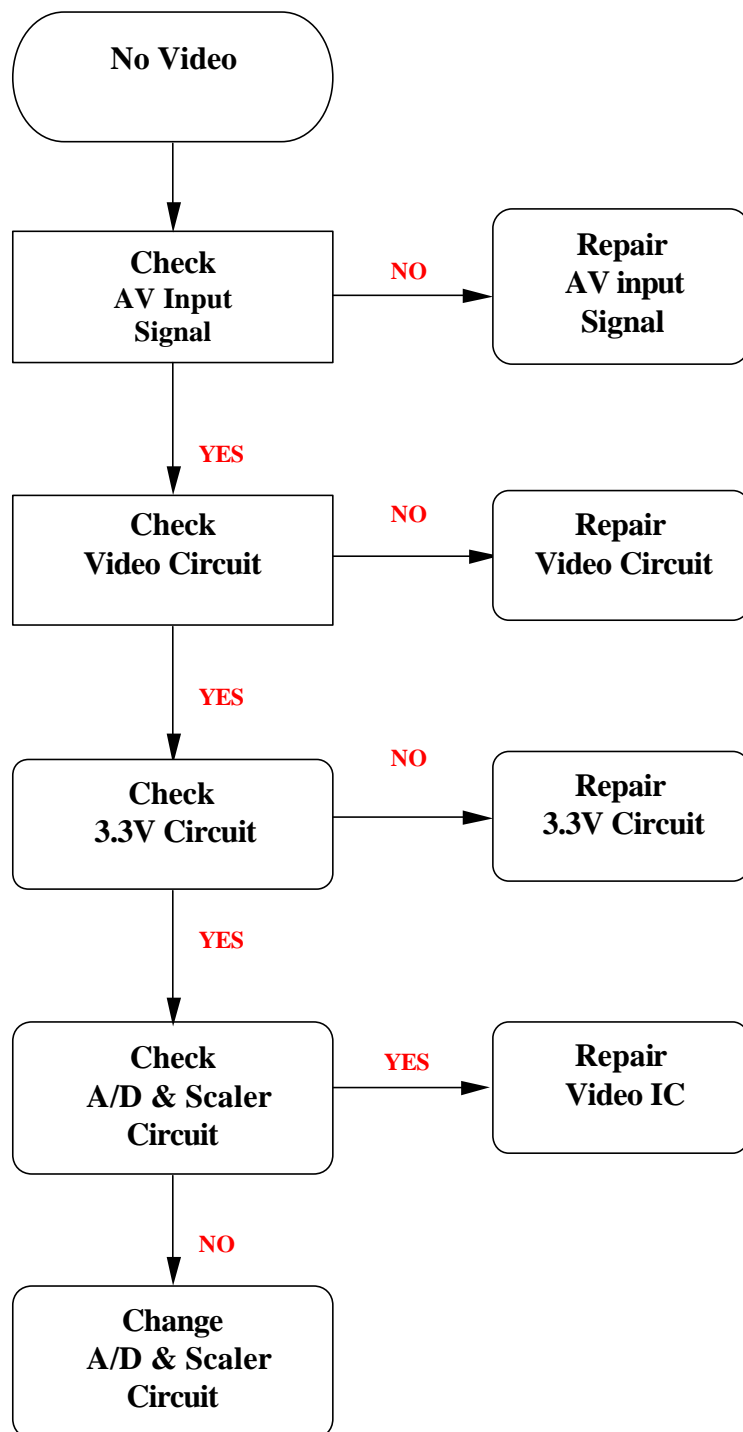
G. TROUBLE SHOOTING HINTS

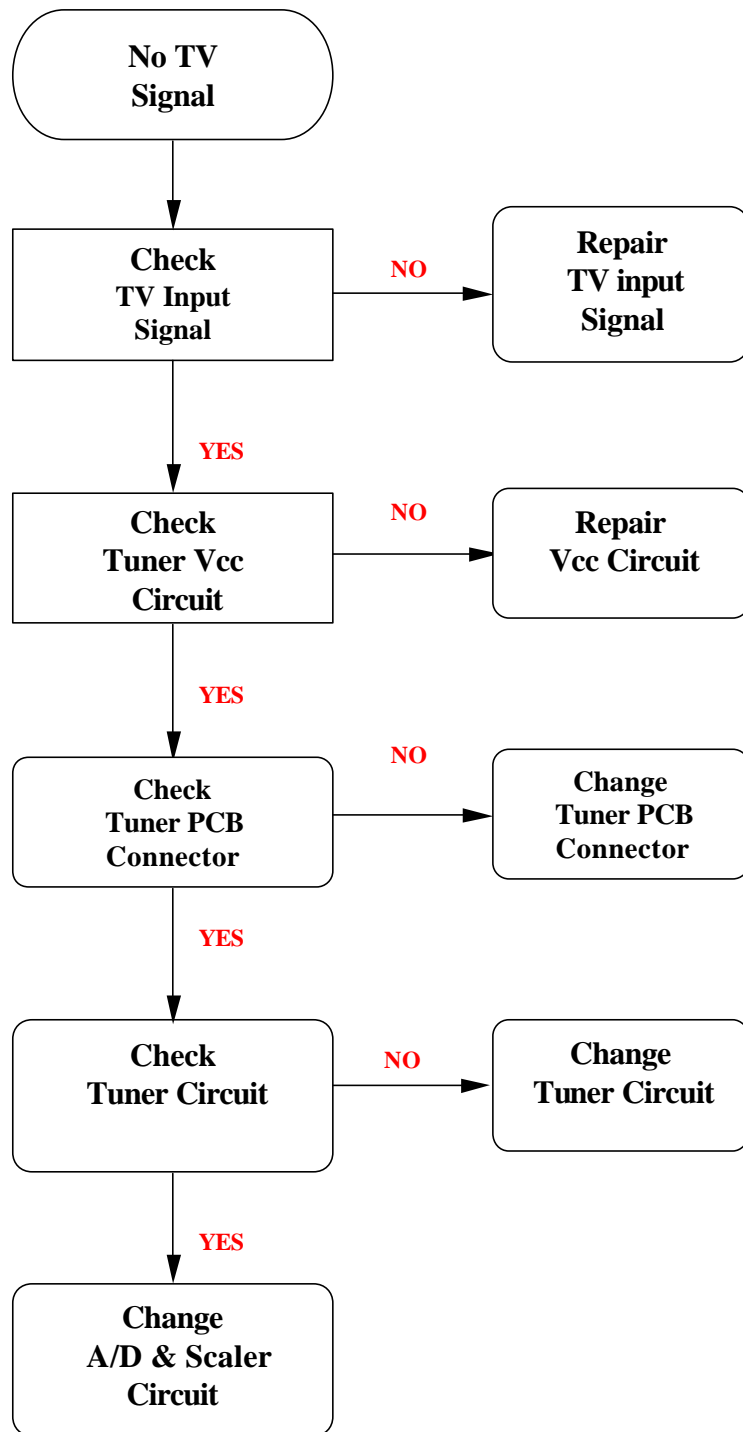












H. REPLACEMENT PARTS LIST

772DT

NO	Parts No.	Description	Part Location	Q'ty
1	200-100-772DT	HD772DT PCB	MAI N PCB	1
2	518-1AO-4801	AO4801 SOP-8	U1,5	2
3	518-1AO-4403	AO4403 SOP-8	U2	1
4	506-1LM-3485	LM3485 MSOP-8	U3	1
5	506-XLT-1117-3	LM1117-33 SOT-223	U6	1
6	506-0AI -C1084	AIC1084-33 TO-263	U7	1
7	506-XLT-1117-18	LM1117-18 SOT-223	U8	1
8	506-RMC-76381-3	76381-33 SOT-89	U9	1
9	506-A00-7114	SAA7114 LQFP-100	U10	1
10	506-524-LC21	24LC21 SOP-8	U11,12	2
11	506-774-LCX14	74LCX14 SOP-14	U13	1
12	506-5NM-24C16	24LC16 SOP-8	U14	1
13	506-774-LVX273	74LV273A TSSOP-20	U15	1
14	506-XPW-131-20	PW131 PQFP-208	U16	1
15	506-774-LCX541	74LVC541A TSSOP-20	U18	1
16	506-5HY-29LV8-7	HY29LV800 TSSOP-48	U19	1
17	506-OCS-5828	SN75LVDS83 SOP-56	U20,21	2
18	506-OPT-2314	PT2314 SOP-28	U22	1
19	504-A00-8227	TA8227P DIP-12H	U23	1
20	505-091-7809	7809 TO-220	U24	1
21	330-331-16205	EC8D 330U/16V	C1,2,17,18,25,29,30,221	8
22	330-100-16255	EC5D 10U/16V	C115,140,163,194,195,196,197	7
23	330-101-10275	EC5D 100U/10V	C22,23,33,34,37,59,70,74,94,103,112,117,129,133,137,146, 154,157,166,174,179,187,189,192,201,202,219	27
24	330-220-16255	EC4D 22U/16V	C209	1
25	330-2R2-50255	EC4D 2.2U/25V	C35,184,185,186,191,198,199,200,222	9
26	330-470-16255	EC5D 47U/25V	C38,210,211,212	4
27	330-471-25205	EC8D 470U/25V	C6,16,203,204	4
28	381-100-032554	CAP 0603 10P/25V	C85,88,93	3
29	381-101-032554	CAP 0603 100P/25V	C77,78,80,81,83	5
30	381-220-032554	CAP 0603 22P/25V	C51,52,142,143,148,149,150, 151,152,153,159,160,161,162	14
31	381-271-032554	CAP 0603 271/25V	C144	1
32	381-471-032554	CAP 0603 470P/25V	C14	1
33	382-103-032564	CAP 0603 103/25V	C13,168,170,172,176,178,181,183	8
34	382-272-035064	CAP 0603 272/25V	C213,214	2
35	382-392-032564	CAP 0603 392/25V	C128	1
36	385-104-032584	CAP 0603 104/25V	C3,4,7,8,9,10,11,12,19,20,21,24,26,27,31,36,39,40,43,44,47, 48,53,54,55,56,60,61,62,63,64,65,66,67,68,69,71,72,73,75,76,79,82,95,96,97,98,99,100,101, 102,104,105,106,107,108,109,110,111,113,114,116,118,119,120,121,122,123,124,125,	102

36	385-104-032584	CAP 0603 104/25V	127, 130,131,132,134,135,136,138,139,141,145, 147,155,158,165,167,169,171,175,177,180,182, 188,190,193,205,206,207,208, 215,216,220	102
37	385-105-041684	CAP 0805 105/16V	C28,32	2
38	385-334-042584	CAP 0603 334/25V	C217,218	2
39	385-393-045084	CAP 0603 393/25V	C126	1
40	385-473-032584	CAP 0603 473/25V	C84,87,92	3
41	282-330-2454	S8RP 33RP	RP1,2,3,4,5,6,7,8,9,10,11,12,13,14	14
42	282-472-2454	S8RP 4.7K	RP15	1
43	281-035-0R04	RES 0603 OR	R7,11,29,31,32,34,38,43,47,49,51,83,88,89,92, 114,117,123, 130,138,L12,L13,L14,L42, L43,L44	26
44	281-035-1014	RES 0603 100	R4,14,19,60,61,66,67,72,78	9
45	281-035-1024	RES 0603 1K	R1,21,25,46,91,101,112,113	8
46	281-035-1034	RES 0603 10K	R56,57,58,68,74,93,94,95,96, 97,98,99,106	13
47	281-035-1044	RES 0603 100K	R8,102,107	3
48	281-035-1054	RES 0603 1M	R90	1
49	281-035-2024	RES 0603 2K	R70,79	2
50	281-035-2034	RES 0603 20K	R6	1
51	281-035-2214	RES 0603 220	R104,105	2
52	281-035-2224	RES 0603 2.2K	R26,27,100,115,128,129,131, 132,133	9
53	281-035-2234	RES 0603 22K	R2,12,15	3
54	281-035-3304	RES 0603 33R	R48,50,62,64,69,76,118,119,120,121,124,125, 126,127	14
55	281-035-3314	RES 0603 330	R13,20,28,30,	4
56	281-035-3324	RES 0603 3.3K	R45,84,108,109,110,111	6
57	281-035-5614	RES 0603 560	R82	1
58	281-035-2704	RES 0603 27R	R139,140,142,143,145,146, 148,149	8
59	281-035-4724	RES 0603 4.7K	R16,17,18,23,24,52,53,55,65, 86,87	11
60	281-035-5114	RES 0603 510	R134,135	2
61	281-035-5604	RES 0603 56R	R39,40,41,42	4
62	281-035-5624	RES 0603 5.6K	R136,137	2
63	281-035-6234	RES 0603 62K	R5	1
64	281-035-7504	RES 0603 75R	R73,77,81,141,144, 147,150	7
65	281-035-7534	RES 0603 75K	R3	1
66	281-035-R184	RES 0603 18R	R33,35,36,37	4
67	745-330-2072	DIP-CK 33UH-5A	L1	1
68	780-103-1510	IND 0603 Bead_150R	R71,75,80	3
69	780-103-600B07	IND 0603 Bead_60R	L9,10,11,15,19,20,21,22,23,24,25,26,27,28,29, 30,31,32,33,34,35,36,37,38,39,40,41	27
70	780-104-8000A	IND 0805 Bead_80R	L7,8	2
71	780-104-2600	IND 0805 Bead_26R	L16,18	2
72	780-104-100K06	IND 0805 Bead_10R	L17	1
73	780-107-8000	IND 1206 Bead_80R	L5,6	2
74	780-112-8000	IND 1812 Bead_80R	L2,3,4	3
75	528-300-SR34	SR34 D1812	D1	1
76	528-2DA-N202U	DAN202U SOT-23	D2,3	2

77	528-200-BAV99	BAV99 SOT-23	D4,5,6	3
78	528-R1N-4148	1N4148 D1206	D7	1
79	529-350-05R1	Zener 5.1V D1206	ZD1,2,3,4,5,6,7,8,9	9
80	558-352-5000	FRSE 5A/24A F1206	F1	1
81	518-02N-3904	3904 SOT-23	Q1,2,3,4,5,6,8,9,10,11	10
82	518-02N-3906	3906 SOT-23	Q7	1
83	531-240-0003	XTAL 24.576MHz DIP	Y1	1
84	531-143-49US	XTAL 14.318MHz DIP	Y2	1
85	409-003-0110	DC Power Jack DIP_180	J1	1
86	152-000-SH570	DC Jack Support	J1	1
87	630-006-4002R	Connector 6PIN 2.0mm DIP_90	J2	1
88	486-000-5704	S-Video DIP_180	J3	1
89	409-003-0113-H	RCA_Y DIP_180	J4	1
90	483-002-104S3	Jumper 4PIN DIP_2.54mm	J5	1
91	630-007-C001	Connector 7PIN 1.5mm DIP_90	J6	1
92	630-006-C001	Connector 6PIN 1.5mm DIP_90	J7	1
93	483-004-2300	Pin connector 30x2 1.0mm DIP_180	J10	1
94	630-030-B000	JSTB30B-PHDSS-DF14 SMD	J11	1
95	409-003-0111-H	RCA_Red DIP_180	J12,13,16	3
96	409-003-0112-H	RCA_White DIP_180	J14,15,17	3
97	485-D29-S118	DVI DIP_180	CN1	1
98	485-415-S060	D-SUB DIP_180	CN2	1
99	630-002-1008	Connector 2PIN 2.0mm DIP_90	CN3.4	2
100	630-008-C001	Connector 8PIN 1.5mm DIP_90	CN5	1
101	631-030-S001-B	Wire	For Panel	1
102	849-4AX-0772	Inverter	(E-MAX)	1
103	849-4AS-0772	Inverter	(SAMPO)	
104	631-006-7772	Wire	For Inverter	1
105	631-006-G572V	Wire	For Power Board	1
106	631-007-G772D	Wire	For Control Board	1
107	631-008-G872T	Wire	For Tuner	1
108	824-002-772VL-A	8R / 2.5W		1
109	824-002-772VR-A	8R / 2.5W		1
110	610-151-15R22	VGA Cable		1
111	621-151-2520WC	Wire	Ear phone to RCA Cable	1
112	621-151-3020	RCA Cable		1
113	846-120-E0AL-SA	Adapter	12V/5A	1
114	600-161-5700P	Power Cable		1
115	845-032-572V	Remote control	PROVI EW Logo Color : black	1
116	845-S32-572V-A	Remote control	PROVI EW Logo Color : silver	
117	845-S32-572V-MB	Remote control	MAG Logo Color : silver	
118	845-032-572V-X	Remote control	No Logo Color : black	
119	845-032-572V-N	Remote control	I N X Logo Color : black	
120	109-948-0860	Screw	For D-SUB	2

121	109-948-1000	Screw	For DVI	2
122	610-151-19R2	DVI -D Cable		1

572V

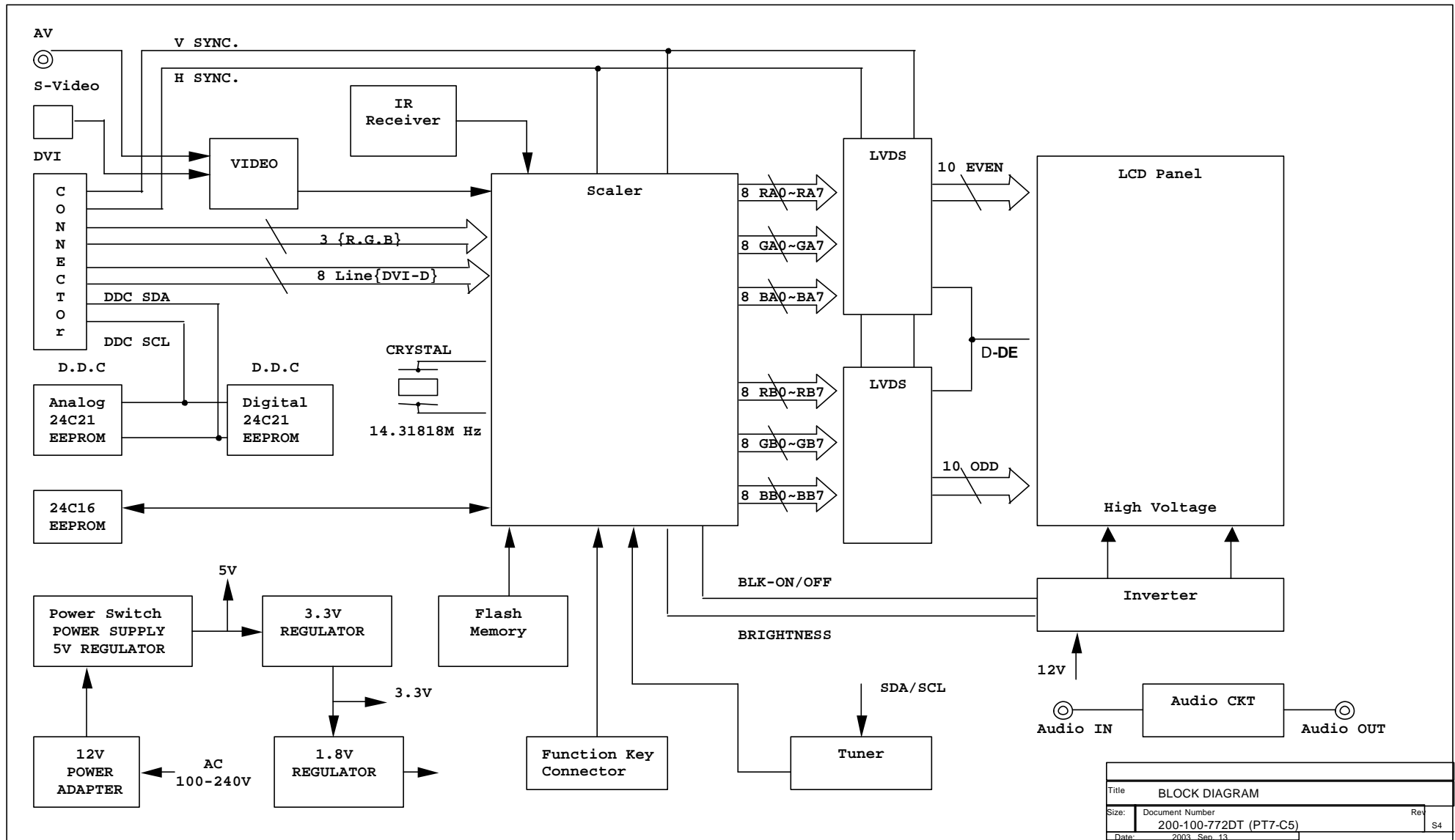
NO	Parts No.	Description	Part Location	Qty
1	200-100-HD572V-A	HD572V Main Board PCB	Main PCB	1
2	506-0AI -C1084	AI C1084-33 TO-263	U1	1
3	506-00G-95063	G950T63U SOT-223	U2	1
4	518-1AO-4403	AO4403 SOP-8	U3	1
5	506-2AI -C1578	AI C1578 SOP-8	U4	1
6	506-RMC-76381-3	AMC76381-3 SOT-89	U5	1
7	518-1AO-4801	AO4801 SOP-8	U6	1
8	505-091-7809	LM7809 TO-220	U7	1
9	506-A00-7114	SAA7114 LQFP-100	U8	1
10	506-774-LCX14	74LCX14 SOP-14	U9,12	2
11	506-774-LV125	74LV125 SOP-14	U10	1
12	506-SSD-2000	SD2000-208 QFP-208	U11	1
13	120-005-SH770	Heatsink	U11	1
14	506-524-LC21	24LC21 SOP-8	U13,16	2
15	506-THC-635151	THC63DV151 TQFP-100	U15	1
16	506-SSM-0230	SM0230 PLCC-44	U18	1
17	481-LCC-0440	IC SOCKET-44 SMD	U18	1
18	506-5NM-24C16	24LC16 SOP-8	U19A	1
19	506-X74-LV4053A	74LV4053 TSSOP-16	U20	1
20	506-OPT-2314	PT2314 SOP-28	U21	1
21	504-A00-8227	TA8227P DIP-12H	U22	1
22	330-100-1622	EC4D 10U/16V	C14,16,133,143,201, 202,204,205	8
23	330-101-16255	EC5D 100U/16V	C11,22,27,30,34,35,54,68,73,100,118,190,193,194,197,208,209,226, 249	19
24	330-102-06205	EC8D 1000U/6.3V	C18	1
25	330-220-16255	EC4D 22U/16V	C150,154,159,161,216	5
26	330-2R2-50255	EC4D 2.2U/25V	C188,191,192,198,200, 206,207	7
27	330-331-16205	EC8D 330U/16V	C1,5,26	2
28	330-470-16255	EC5D 47U/16V	C23,104,162,217,218, 219	6
29	330-471-25205	EC8D 470U/25V	C4,210,211	3
30	381-100-032554	CAP 0603 10P/25V	C38,39,42,43,46,47,52,53,79,83,87,140	12
31	381-101-032554	CAP 0603 100P/25V	C80,90,91,105,106,141,144,251	8
32	382-103-032554	CAP 0603 103/25V	C7,21,102,135	4
33	381-220-032554	CAP 0603 22P/25V	C48,49,89,165,173,174,177,178,179,180,181, 182,183,230, 231,232	16
34	381-221-032554	CAP 0603 220P/25V	C10,164	2
35	381-330-032554	CAP 0603 33P/25V	C136,137,138,139	4
36	382-272-035064	CAP 0603 272/25V	C220,221	2

37	385-104-032584	CAP 0603 104/25V	C2,3,6,8,9,12,13,15,17,19,20,24,25,28,29,31,32,33,36,37,40,41,44,45,50,51,55,56,57,58,59,60,61,62,63,64,66,69,70,71,72,74,75,76,85,86,88,93,94,95,96,97,98,99,101,103,107,108,109,110,111,112,113,114,115,116,117,123,124,125,126,127,128,129,130,131,132,134,142,145,146,147,148,149,151,152,153,155,156,157,158,160,163,168,172,175,176,184,186,187,195,196,199,212,213,214,215,222,223,227,235,236,237,238,239,240,241,242,243,244	120
38	385-105-041684	CAP 0805 105/16V	C167	1
39	385-334-042584	CAP 0603 334/25V	C224,225	2
40	385-473-032584	CAP 0603 473/25V	C77,82,84	3
41	282-101-2454	S8RP 100RP	RP6	1
42	282-330-2454	S8RP 33RP	RP1,2,3,4,5,7,8,9,10,11,12,LP1,2,3,4,5,6,7,8,9,10,11,12	23
43	282-472-2454	S8RP 4.7KRP	RP13,14,15,16,17	5
44	232-R02-505T	DIP_5mm 0.02R/5W	R6	1
45	281-031-20014	RES 0603 2K/1%	R9	1
46	281-031-62014	RES 0603 6.2K/1%	R8	1
47	281-035-0R04	RES 0603 0R	R45,60,77,85,79,122,127,131,134,143,L22,L60,L61	13
48	281-035-1014	RES 0603 100	R15,44,61,62,63,64,65,66,67,68,69,80,82,92,135,136,139	17
49	281-035-1024	RES 0603 1K	R37,86,93,104,114,115	6
50	281-035-1034	RES 0603 10K	R11,14,49,50,58,59,94,95,96,105,138,140,141	13
51	281-035-1044	RES 0603 100K	R16	1
52	281-035-1054	RES 0603 1M	R100	1
53	281-035-1064	RES 0603 10M	R5	1
54	281-035-1214	RES 0603 120	R52,56,57	3
55	281-035-1514	RES 0603 150	R97	1
56	281-035-2024	RES 0603 2K	R7,18,19,23,24,53,54	7
57	281-035-2204	RES 0603 22R	R25,27,31,36,39,70,71,72,78	9
58	281-035-2214	RES 0603 220	R111,112	2
59	281-035-2224	RES 0603 2.2K	R108,113,117,118,119,120,121	7
60	281-035-2234	RES 0603 22K	R12	1
61	281-035-3304	RES 0603 33R	R40,42,51,55,74,75,76,90,91,107,109	11
62	281-035-3314	RES 0603 330	R1,4,10,13,21	5
63	281-035-3324	RES 0603 3.3K	R38	1
64	281-035-4704	RES 0603 47R	R116	1
65	281-035-4724	RES 0603 4.7K	R3,87,88,98,99,101,102,103,106,110	10
66	281-035-5114	RES 0603 510	R83,89,123,124	4
67	281-035-5604	RES 0603 56R	R32,33,34,35	4
68	281-035-5624	RES 0603 5.6K	R125,126	2
69	281-035-7504	RES 0603 75R	R46,47,48	3
70	281-035-R184	RES 0603 18R	R26,28,29,30	4
71	745-330-2072	DIP_5mm 33UH-CK	L5	1
72	780-103-6000	IND 0603 Bead_60R	L4,6,7,13,14,15,29,30,31,32,35,36,37,38,39,40,41,42,43,44,46,47,48,49	24
73	780-104-8000A	IND 0805 Bead_80R	L19,20,21,23,24,26,27,33	8

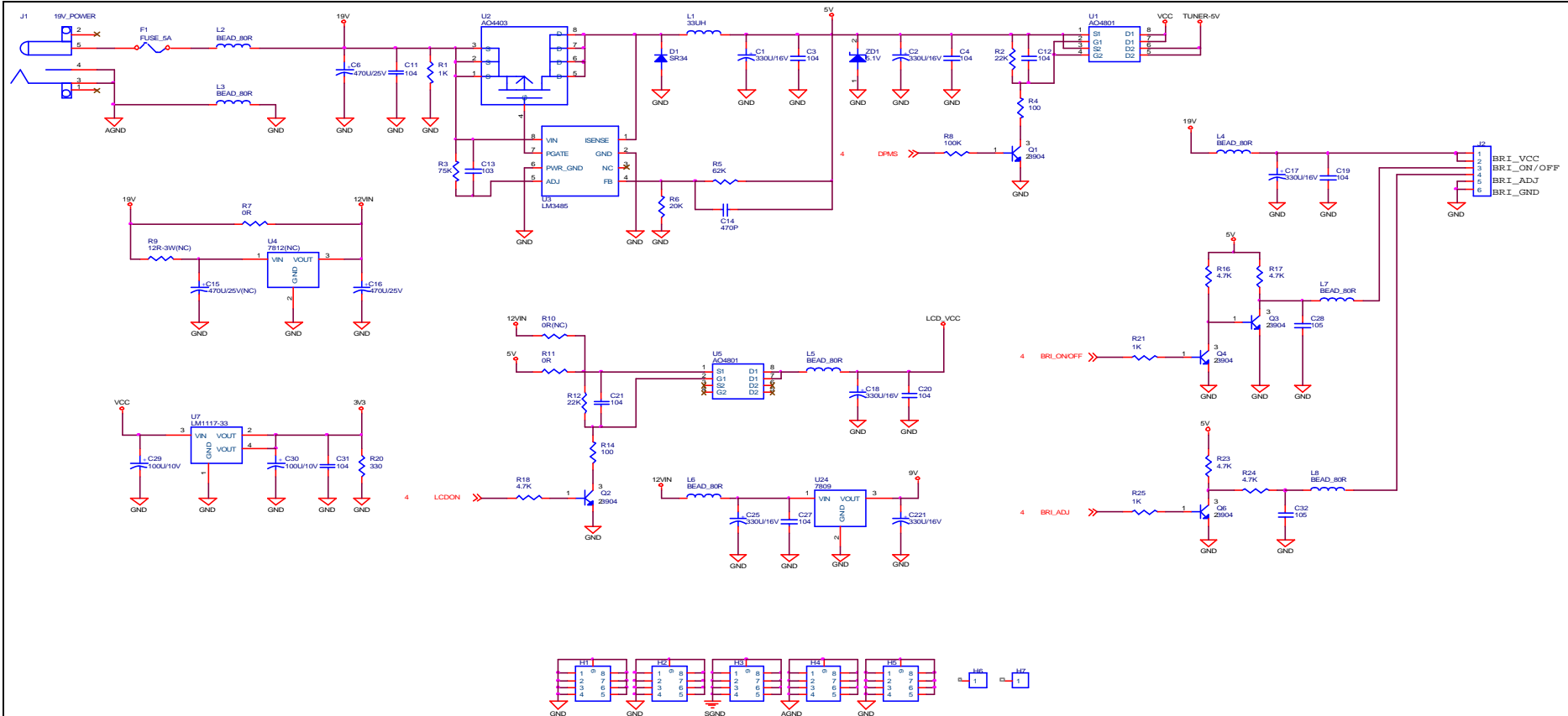
74	780-104-8000C	IND 0805 Bead_80R(RGA)	L16,17,18	3
75	780-107-8000	IND 1206 Bead_80R	L8,10,11,12	4
76	780-112-8000	IND 1812 Bead_80R	L1,2,3	3
77	520-010-5820	1N5820 DIP_200mm	D1	1
78	528-200-BAV99	BAV99 SOT-23	D2,3,4	3
79	528-2DA-N202U	DAN202U SOT-23	D5,8	2
80	528-R1N-4148	1N4148 D1206	D6,7	2
81	529-350-05R1	Zener 5.1V D1206	ZD1,2,3,4,5,6,7,8,9	9
82	518-02N-3904	MMBT3904L SOT-23	Q1,3,4,6,7,8,9,10	8
83	518-000-3400	AO3400 SOT-23	Q2	1
84	558-352-5000	Fuse 24V/5A F1206	F1	1
85	531-240-0003	XTAL 24.576MHz DIP	Y1	1
86	531-110-49US	XTAL 11.059MHz DIP	Y2	1
87	630-006-4002R	Connector 6PIN 2.0mm DIP_90	CN1	1
88	485-415-S060	DB-15 DIP_180 (Blue)	CN2	1
89	485-D29-S118	DVI DIP_180 (White)	CN4	1
90	631-009-C001	Connector 7PIN 1.5mm DIP_90	CN5	1
91	630-006-C001	Connector 6PIN 1.5mm DIP_90	CN6	1
92	630-045-9003	XF2H-4515-1 SMD-40	CN7	1
93	630-303-9003	XF2H-3015-1 SMD-30	CN9	1
94	630-002-1008	Connector 2PIN 2.0mm DIP_90	CN11,12	2
95	630-008-C001	Connector 8PIN 1.5mm DIP_90	CN13	1
96	409-003-0110	DC Power Jack DIP_180	J1	1
97	152-000-SH570	DC Power Support	J1	1
98	409-003-0113	RCA_Yellow DIP_180	J2	1
99	409-003-0111	RCA_Red DIP_180	J4,7,8	3
100	409-003-0112	RCA_White DIP_180	J6,9,10	3
101	486-000-5704	S-Video DIP_180	J3	1
102	849-4NX-0572	Inverter	(E-MAX)	1
103	631-006-7772	Wire	For Inverter	1
104	631-006-G572V	Wire	For Power Board	1
105	631-007-G572V	Wire	For Control Board	1
106	631-008-G872T	Wire	For Tuner	1
107	631-045-F0003	Wire	For Pannel (FFC 45 PIN)	1
108	631-030-F0003	Wire	For Panel (FFC 30 PIN)	1
109	842-2R5-772VL	Speaker	L	1
110	824-2R5-772VR	Speaker	R	1
111	610-151-15R2	VGA Cable		1
112	621-151-2520WC	RCA Cable	Earphone to RCA Cable	1
113	621-151-3020	RCA Cable		1
114	846-120-E0AL-A	ADAPTER	12V/5A	1
115	600-161-5700P	Power Cable		1
116	845-032-572V	Remote Control	Color : Black	1
117	845-B32-572V	Remote Control	color : Black	

118	845-S32-572V	Remote Control	color : Silver	
119	845-032-572V-T	Remote Control	For TCL	
120	845-S32-572V-MB	Remote Control	MAG Logo color : Silver	
121	845-S32-572V-A	Remote Control	PROVIEW Logo color : Silver	1
122	705-350-2605	Panel	AU M150XN04	1
123	109-948-0860	Wire	For D-SUB connector	1
124	109-948-1000	Wire	For DVI connector	1

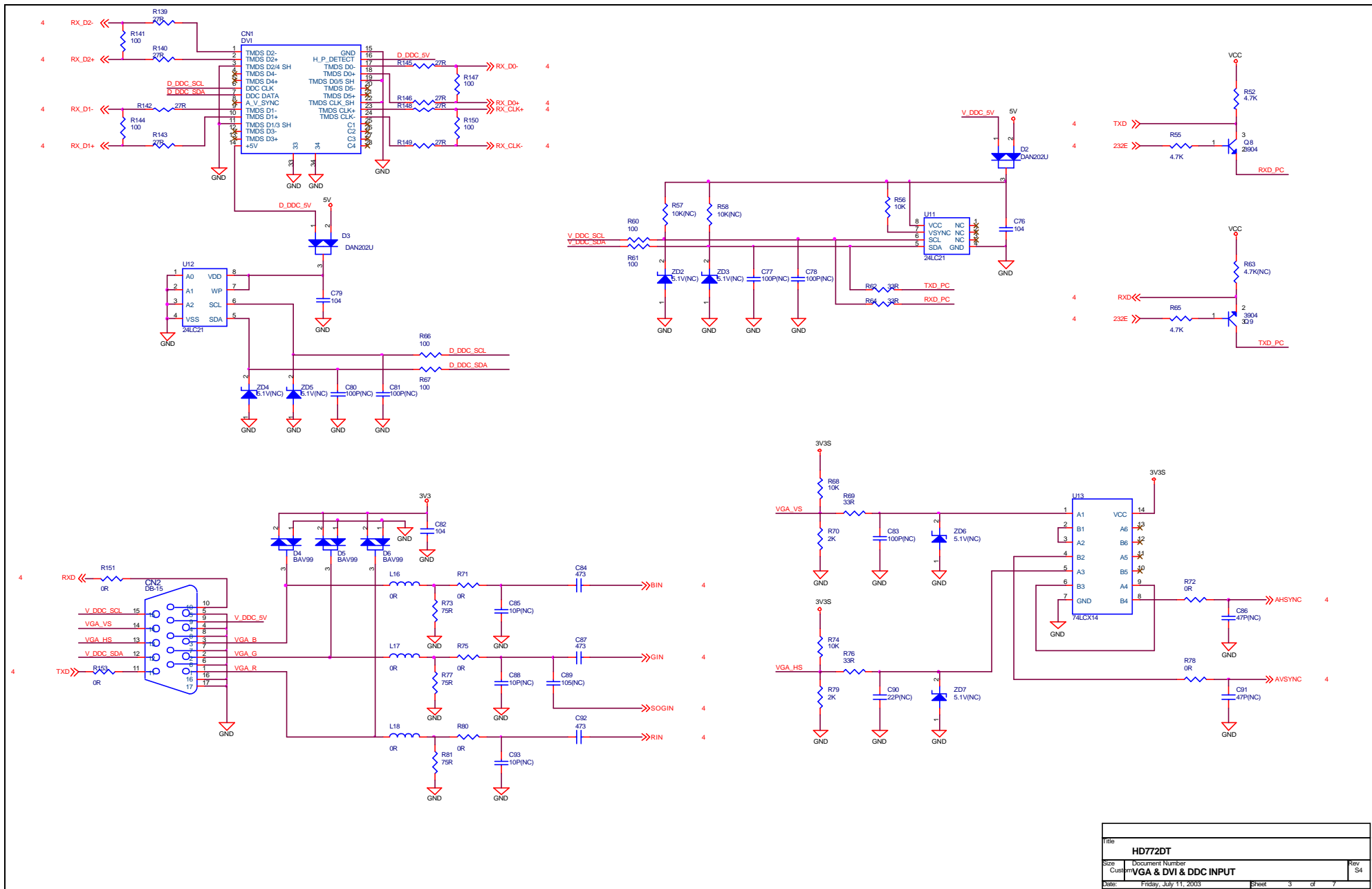
I. BLOCK DIAGRAM

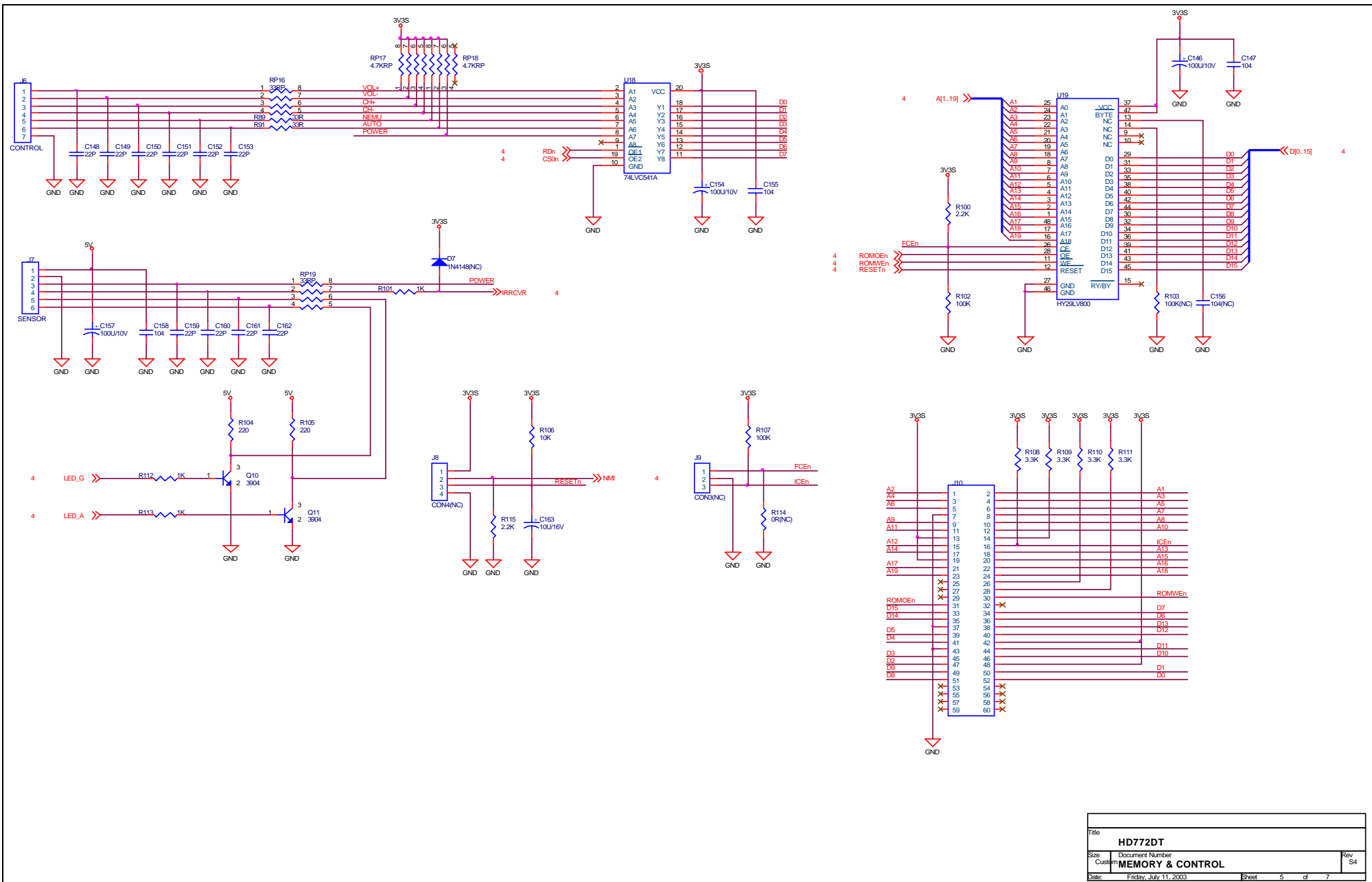


J. SCHEMATIC DIAGRAM (17" / 19")

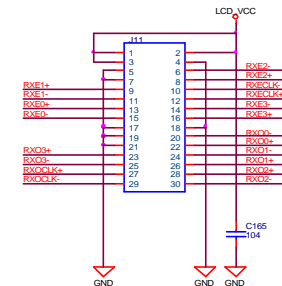
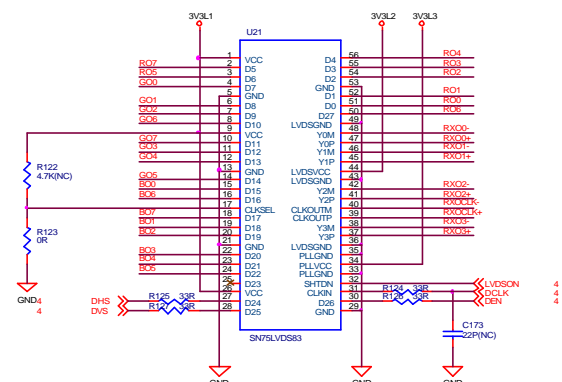
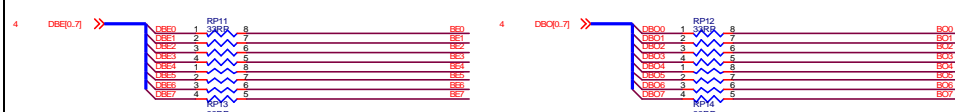


Title			
HD772DT			
Size	Document Number		Rev
C	POWER		S4
Date:	Friday, July 11, 2003	Sheet	1 of 7

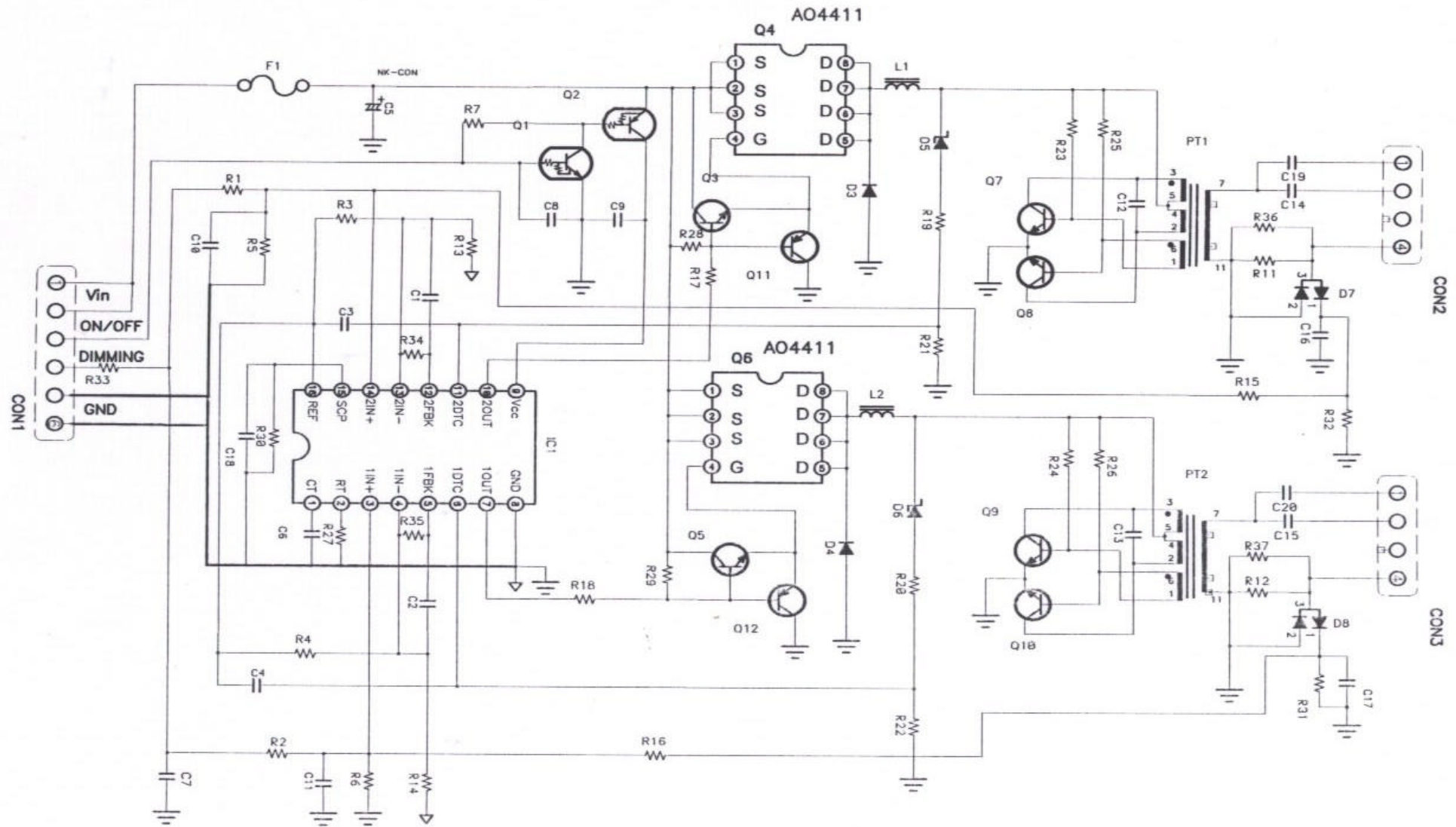




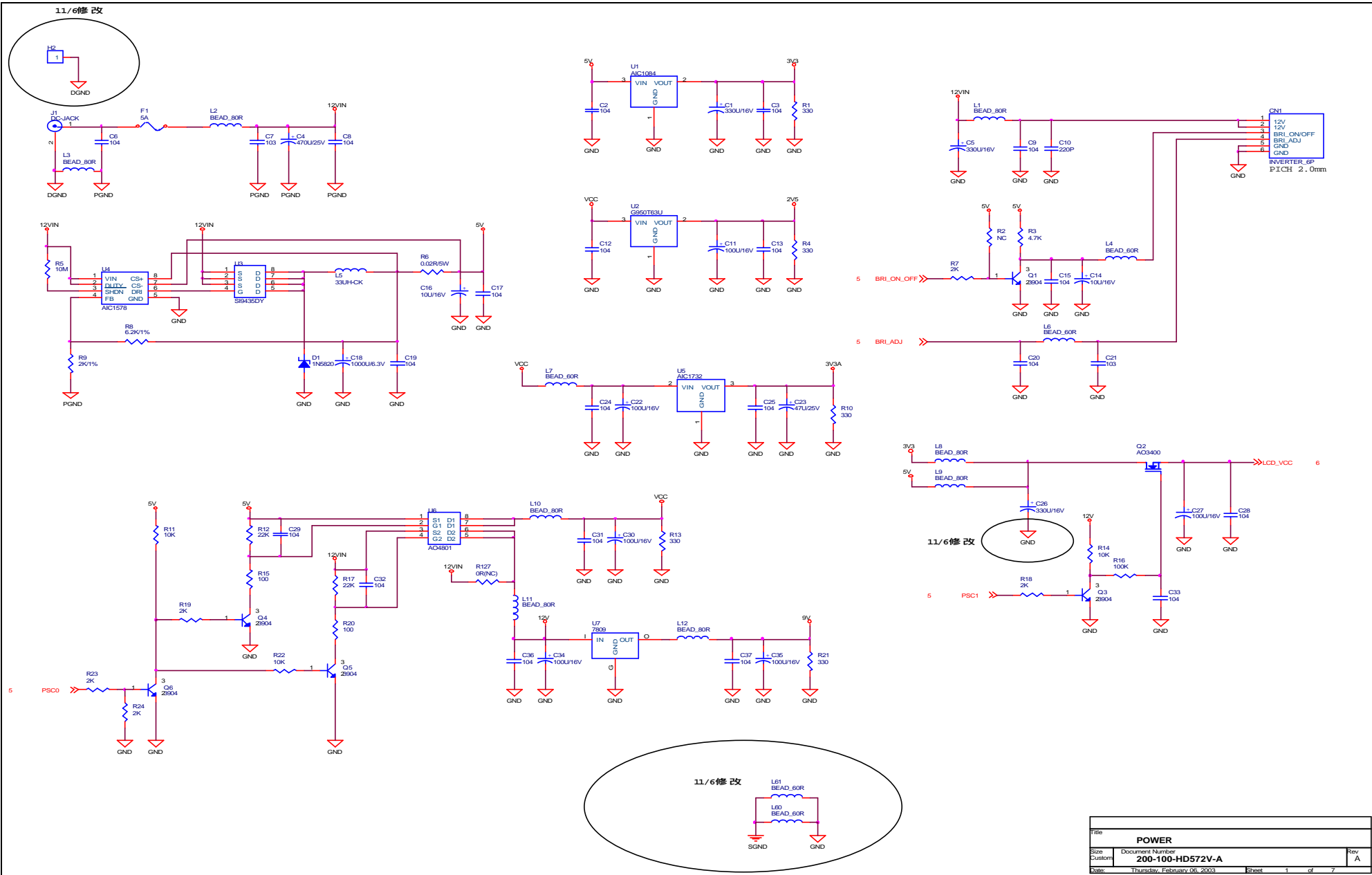
Title				
HD772DT				
Size	Document Number			Rev
Custom	MEMORY & CONTROL			S4
Date:	Friday, July 11, 2003		Sheet	5 of 7



Inverter

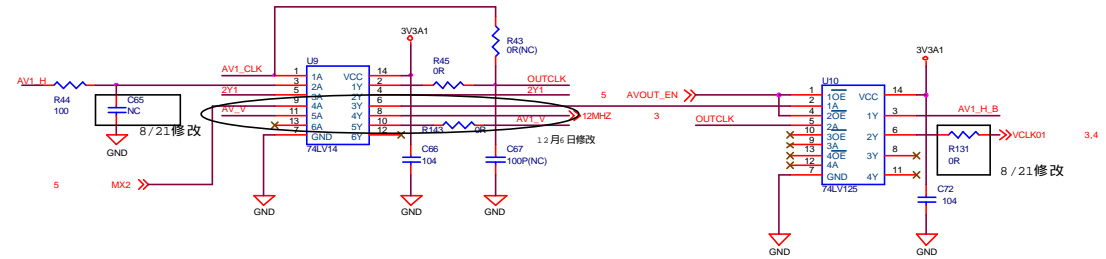
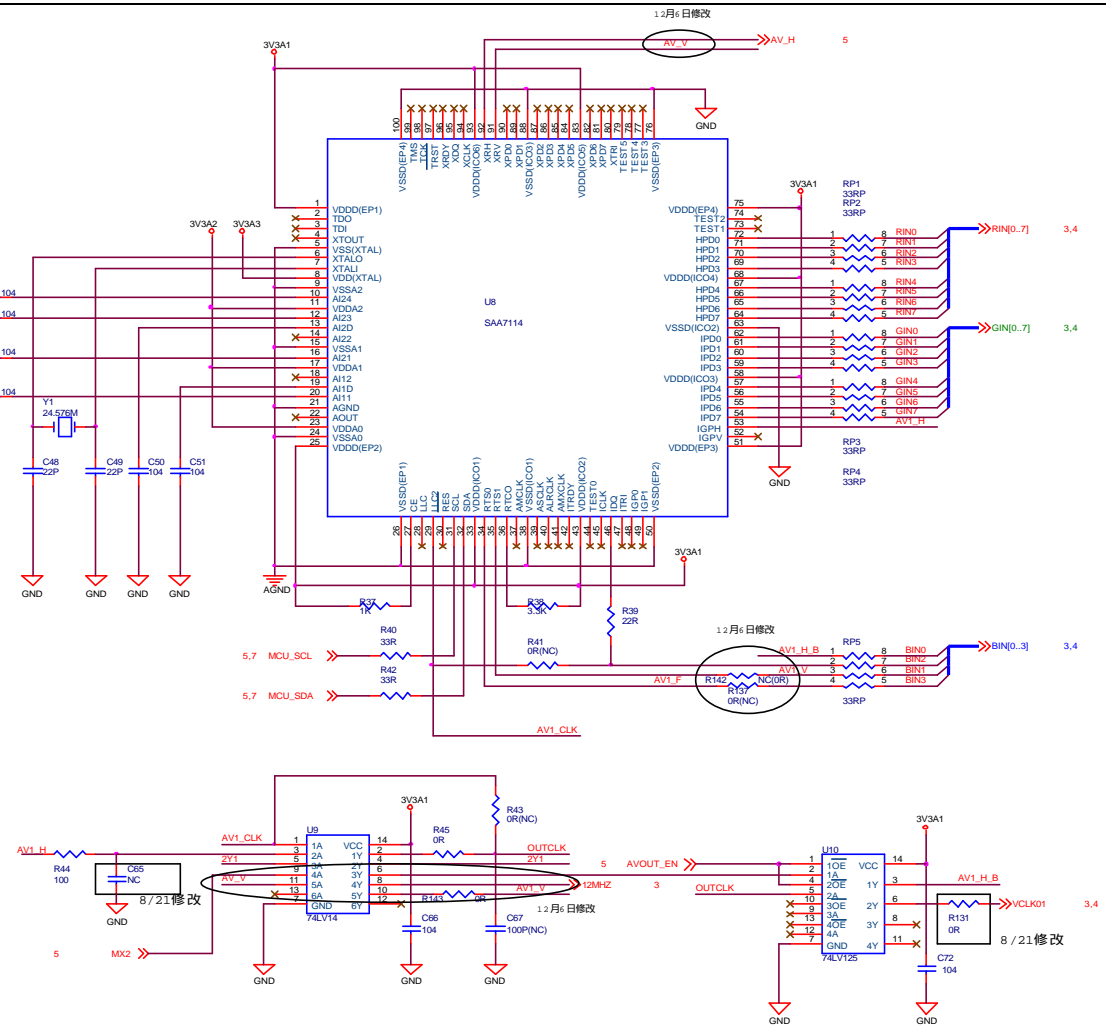
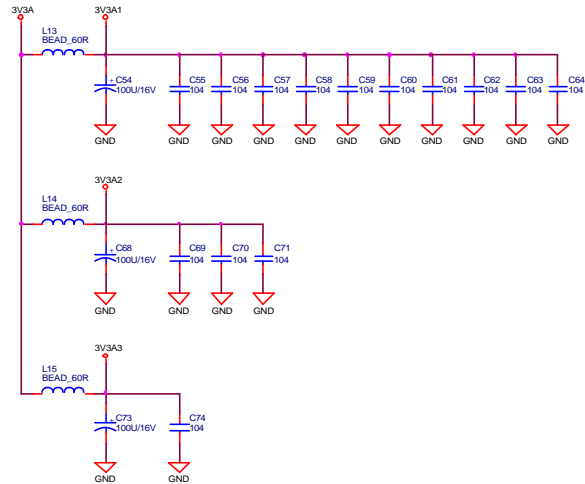
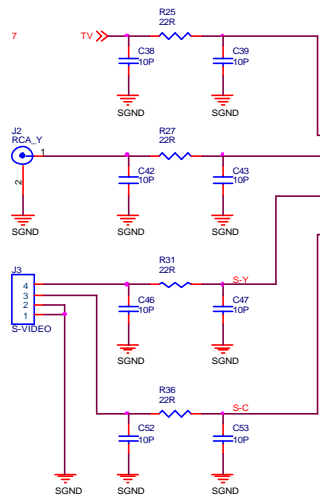


11/6修改

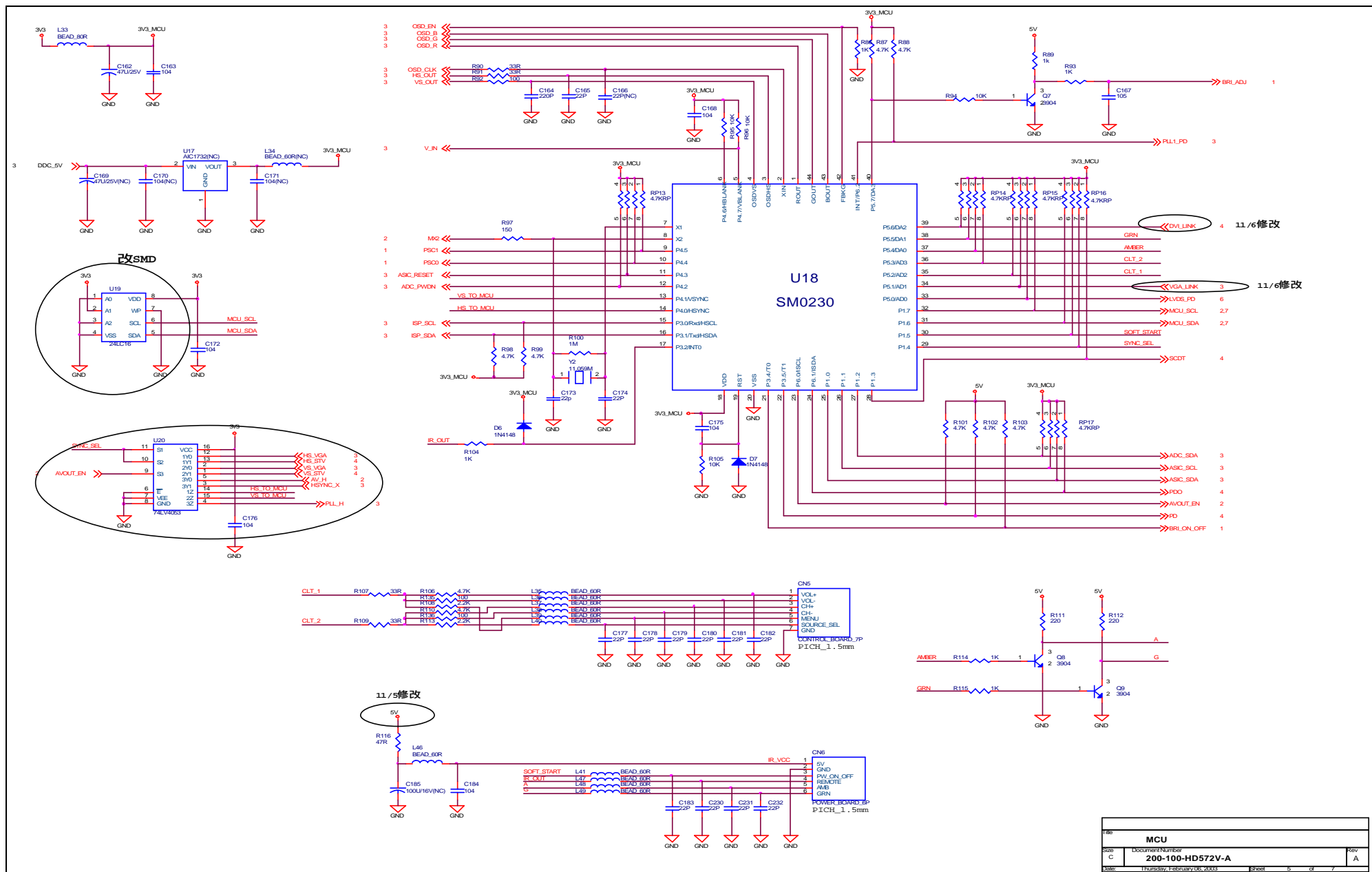


File	POWER	
Size	Document Number	Rev
Custom	200-100-HD572V-A	A
Date	Thursday, February 06, 2003	Sheet 1 of 7

11/6修改



File	SAA7114		
Size	Document Number		Rev
Custom	200-100-HD572V-A		A
Date	Thursday, February 08, 2003	Sheet	2 of 7



Memu